

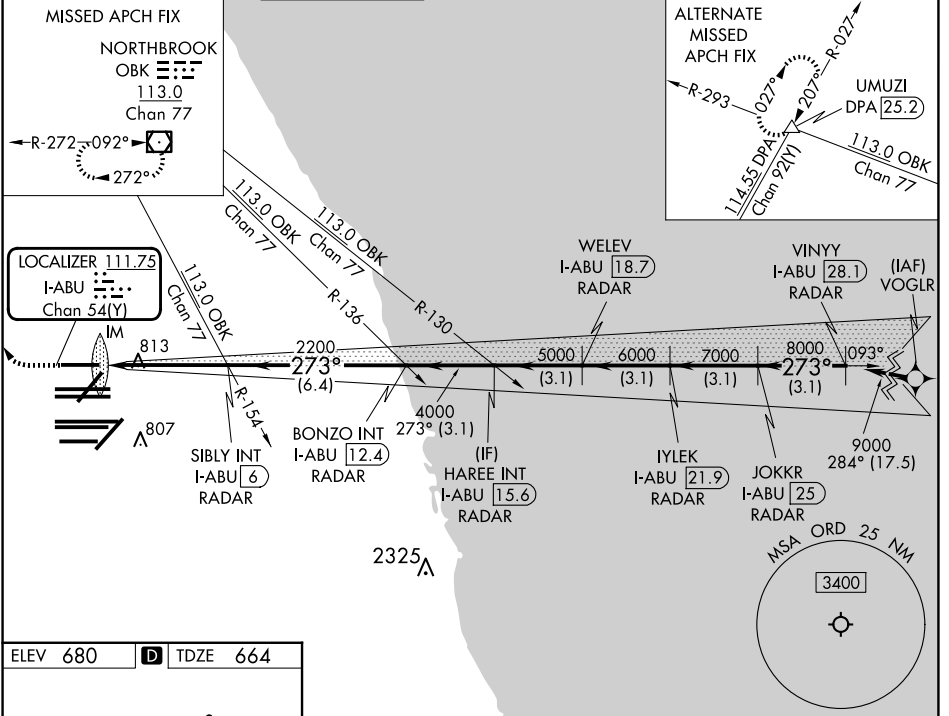
LOC/DME I-ABU 111.75 Chan 54 (Y)	APP CRS 273°	Rwy Ldg 7500 TDZE 664 Apt Elev 680
---	------------------------	---

ILS RWY 27R (SA CAT I)

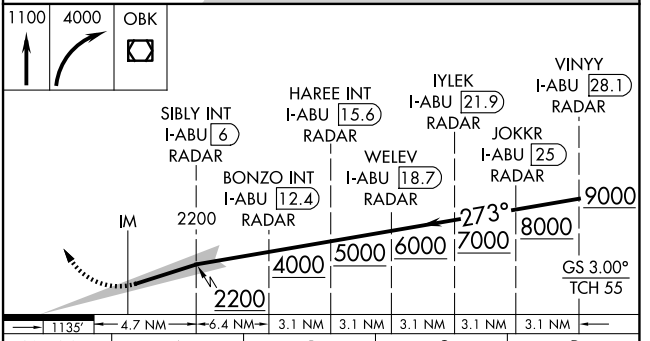
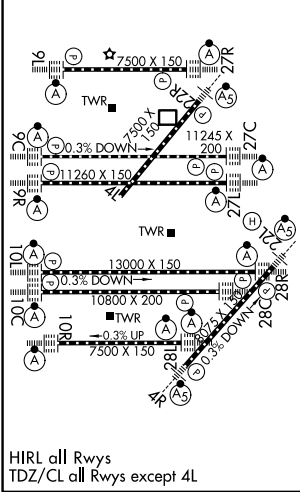
CHICAGO O'HARE INTL (ORD)

RNAV-1 GPS or RADAR required for procedure entry. RADAR or DME required.	ALSF-2	MISSED APPROACH: Climb to 1100 then climbing right turn to 4000 direct OBK VOR/DME and hold, continue climb-in-hold to 4000.
Simultaneous approach authorized. Requires specific OPSPEC, MSPEC, or LOA approval and use of HUD to DH.		

D-ATIS 135.4 282.225	CHICAGO APP CON 119.0 292.125	O'HARE TOWER 128.15 348.0	124.125 (GND CON) 118.05 (TWR NORTH) 226.675 (TWR SOUTH) (ALL TWRs)	121.75 (TWR CENTER) 121.9 (OBND) 121.9 (IBND)	CLNC DEL 121.6	CPDLC
--	---	-------------------------------------	---	--	--------------------------	-------



ELEV 680	D	TDZE 664
----------	----------	----------



CATEGORY	A	B	C	D
S-ILS-27R	RA 171/14 150 DA 814			
SA CATEGORY I ILS - SPECIAL AIRCREW & AIRCRAFT CERTIFICATION REQUIRED				

EC-3, 16 APR 2026 to 14 MAY 2026

EC-3, 16 APR 2026 to 14 MAY 2026