

LOC/DME I-TSL <b>111.1</b> Chan 48	APP CRS <b>273°</b>	Rwy Ldg TDZE Apt Elev	<b>13000</b> <b>651</b> <b>680</b>
--	------------------------	-----------------------------	--

# ILS RWY 28R (CAT II & III)

CHICAGO O'HARE INTL (ORD)

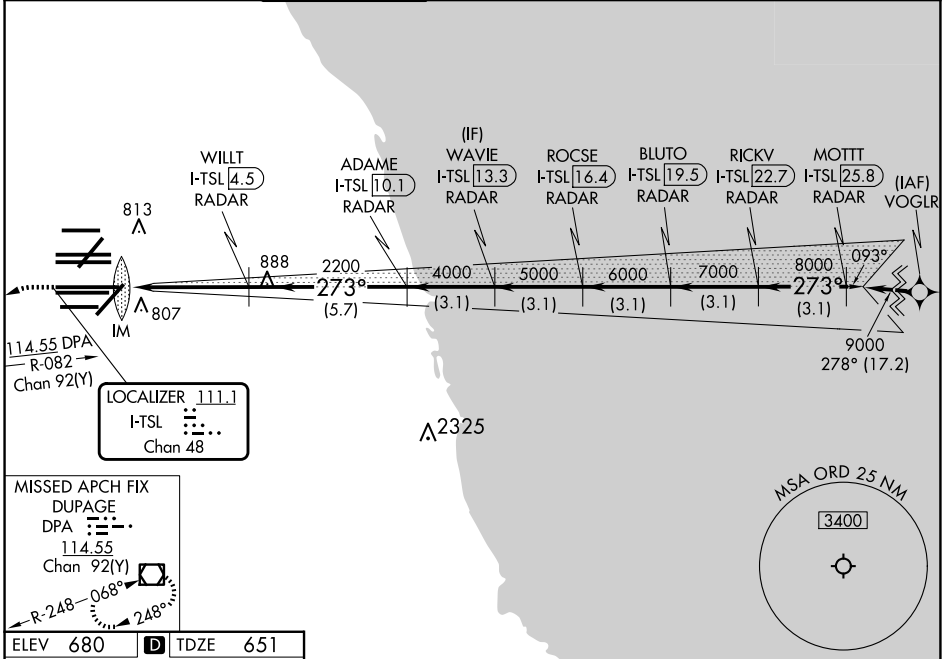
From VOGLR: RNAV 1-GPS required.  
Aircraft not GPS equipped - RADAR required for procedure entry.  
DME or RADAR required.



MISSED APPROACH: Climb to 1100 then climbing left turn to 4000 on heading 215° and DPA VOR/DME R-082 to DPA VOR/DME and hold.

Simultaneous approach authorized.

D-ATIS <b>135.4</b> <b>282.225</b>	CHICAGO APP CON <b>119.0 292.125</b>	O'HARE TOWER <b>132.7 348.0</b>	GND CON (TWR CENTER) <b>124.125</b> (TWR NORTH) <b>118.05</b> (TWR SOUTH) <b>226.675</b> (ALL TWRs)	(TWR CENTER) <b>121.75</b> (OBND) <b>121.9</b> (IBND)	CLNC DEL <b>121.6</b>	CPDLC
--	---	------------------------------------	--	---	--------------------------	-------



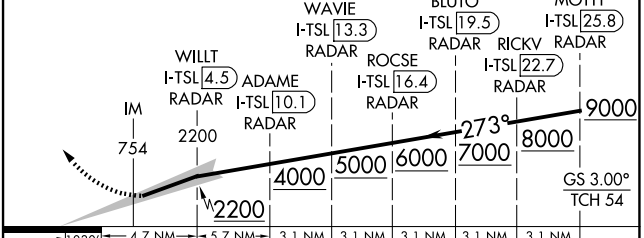
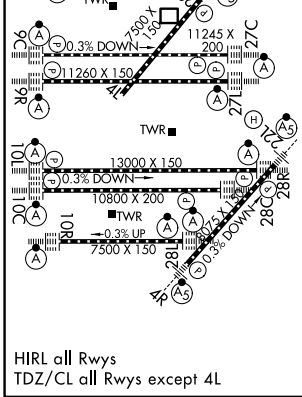
EC-3, 16 APR 2026 to 14 MAY 2026

EC-3, 16 APR 2026 to 14 MAY 2026

ELEV 680	<b>D</b>	TDZE 651
----------	----------	----------

1100	4000	DPA
↑	hdg 215°	R-082

VGSI and ILS glidepath not coincident (VGSI Angle 3.00/TCH 70).



1030	4.7 NM	5.7 NM	3.1 NM	3.1 NM	3.1 NM	3.1 NM	3.1 NM	
CATEGORY	A	B	C	D				
S-ILS 28R	CAT II RA 97/12 100 DA 751							
S-ILS 28R	CAT III RVR 06							

## CATEGORY II & III ILS - SPECIAL AIRCREW & AIRCRAFT CERTIFICATION REQUIRED