

LOC/DME I-TSL 111.1 Chan 48	APP CRS 273°	Rwy Ldg 13000 TDZE 651 Apt Elev 680
---	------------------------	--

ILS RWY 28R (SA CAT I)

CHICAGO O'HARE INTL (ORD)

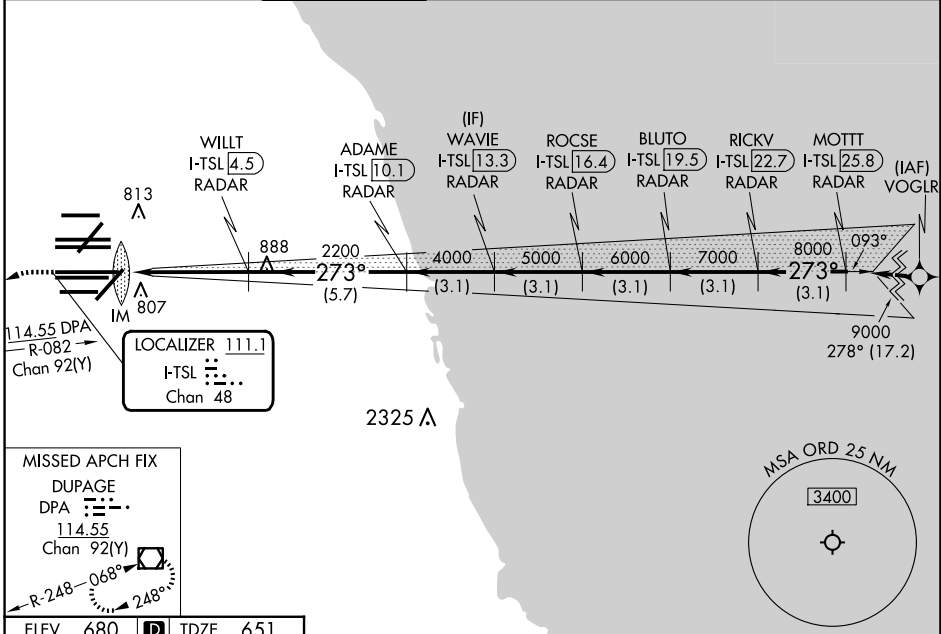
From VOGLR: RNAV 1-GPS required.
Aircraft not GPS equipped - RADAR required for procedure entry.
DME or RADAR required.

ALSIF-2

MISSED APPROACH: Climb to 1100 then climbing left turn to 4000 on heading 215° and DPA VOR/DME R-082 to DPA VOR/DME and hold.

Simultaneous approach authorized. Requires specific OPSPEC, MSPEC, or LOA approval and use of HUD to DH.

D-ATIS 135.4 282.225	CHICAGO APP CON 119.0 292.125	O'HARE TOWER 132.7 348.0	GND CON (TWR CENTER) 124.125 (TWR NORTH) 118.05 (TWR SOUTH) 226.675 (ALL TWRs)	(TWR CENTER) (OBND) 121.75 (TWR CENTER) (IBND) 121.9	CLNC DEL 121.6	CPDLC
--	---	------------------------------------	--	---	--------------------------	-------

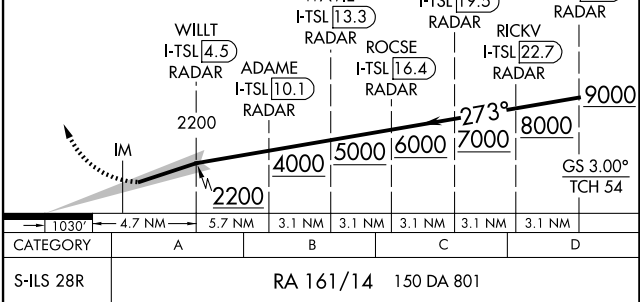
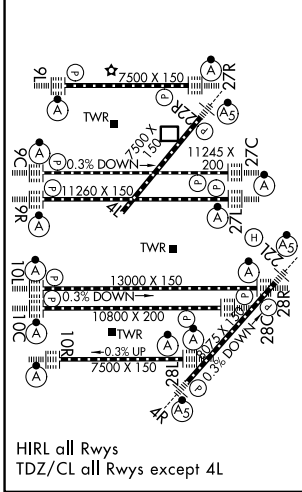


EC-3, 16 APR 2026 to 14 MAY 2026

EC-3, 16 APR 2026 to 14 MAY 2026

ELEV 680	D	TDZE 651
-----------------	----------	-----------------

1100	4000	DPA	VGSI and ILS glidepath not coincident (VGSI Angle 3.00/TCH 70).
↑	hdg. 215°	R-082	



SA CATEGORY I ILS - SPECIAL AIRCREW & AIRCRAFT CERTIFICATION REQUIRED