

LOC/DME I-MED 111.1 Chan 48	APP CRS 093°	Rwy Ldg 12246 TDZE 672 Apt Elev 680
---	------------------------	--

ILS or LOC RWY 10L

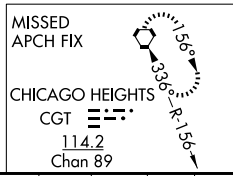
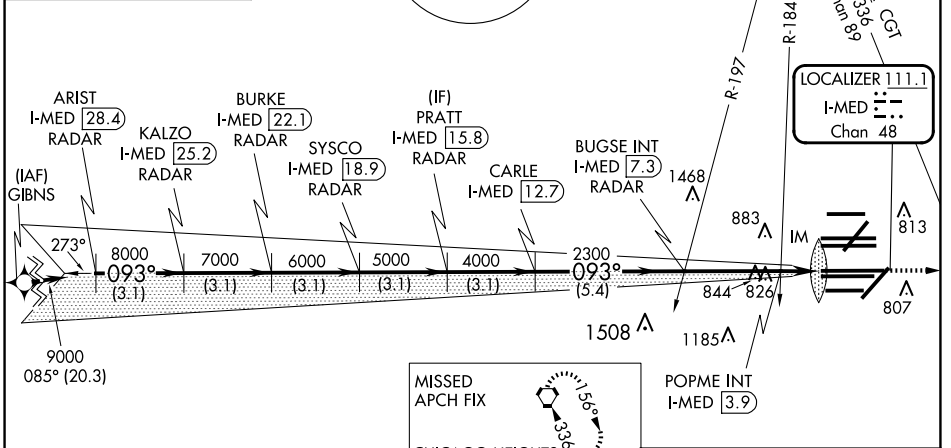
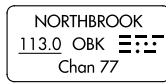
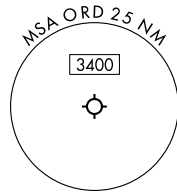
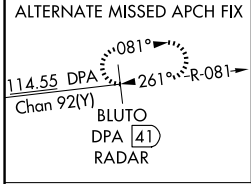
CHICAGO O'HARE INTL (ORD)

From GIBNS: RNAV-1 GPS required.
 RNAV 1-GPS or RADAR required for procedure entry. DME or RADAR required.
 Simultaneous approach authorized.

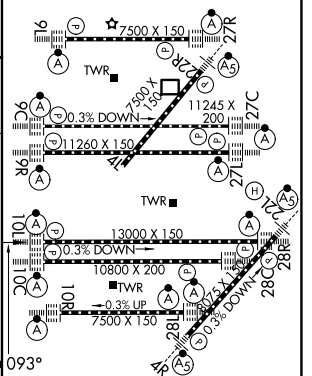
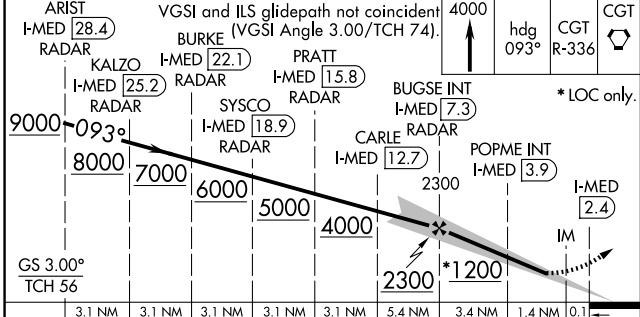


MISSED APPROACH: Climb to 4000 on heading 093° and CGT VORTAC R-336 to CGT VORTAC and hold.

D-ATIS 135.4 282.225	CHICAGO APP CON 119.0 292.125	O'HARE TOWER 132.7 348.0	GND CON (TWR CENTER) 124.125 (TWR NORTH) 118.05 (TWR SOUTH) 226.675 (ALL TWRS)	121.75 (OBND) 121.9 (IBND)	CLNC DEL 121.6	CPDLC
--	---	------------------------------------	--	---	--------------------------	-------



ELEV 680	TDZE 672
----------	----------



CATEGORY	A	B	C	D
S-ILS 10L	872/18		200 (200-½)	
S-LOC 10L	1200/24 528 (600-½)		1200/55 528 (600-1)	
POPME FIX MINIMUMS (DUAL VOR RECEIVERS OR DME REQUIRED)				
S-LOC 10L	1080/24 408 (400-½)		1080/40 408 (400-¾)	

HRTL all Rwys TDZ/CL all Rwys except 4L					
FAF to MAP 4.9 NM					
Knots	60	90	120	150	180
Min:Sec	4:54	3:16	2:27	1:58	1:38