

LOC/DME I-VZE 108.95 Chan 26 (Y)	APP CRS 273°	Rwy Ldg 10800
		TDZE 651
		Apt Elev 680

ILS or LOC RWY 28C

CHICAGO O'HARE INTL (ORD)

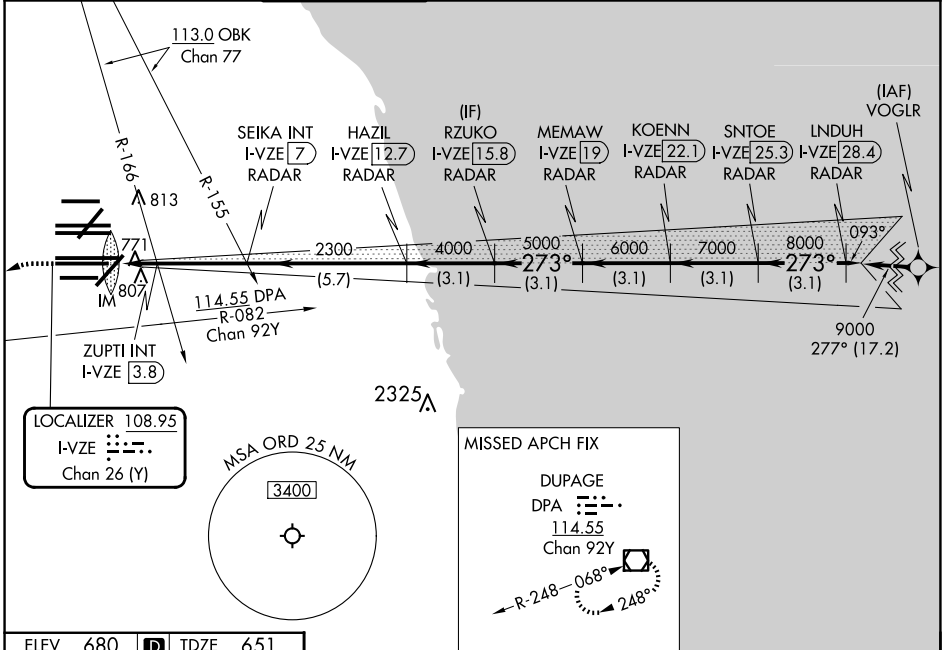
From VOGLR: RNAV 1-GPS required.
Aircraft not GPS equipped - RADAR required for procedure entry.
DME or RADAR required.

ALSf-2

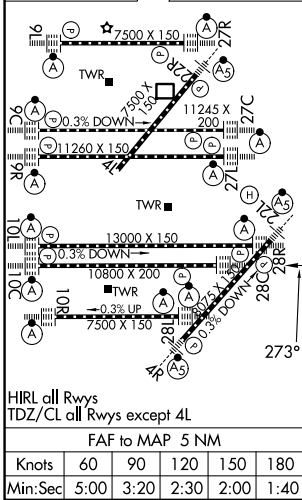
MISSED APPROACH: Climb to 1100 then climbing left turn to 4000 on heading 215° and DPA VOR/DME R-082 to DPA VOR/DME and hold.

Simultaneous approach authorized.

D-ATIS 135.4 282.225	CHICAGO APP CON 119.0 292.125	O'HARE TOWER 120.75 348.0	GND CON (TWR CENTER) 124.125 (TWR NORTH) 121.75 (TWR SOUTH) 118.05 (ALL TWRS) 226.675	(TWR CENTER) 121.75 (OBND) 121.9 (IBND)	CLNC DEL 121.6	CPDLC
--	---	-------------------------------------	---	---	--------------------------	-------



ELEV 680	D	TDZE 651
----------	---	----------



EC-3, 16 APR 2026 to 14 MAY 2026

EC-3, 16 APR 2026 to 14 MAY 2026