

LOC/DME I-OYG 111.9 Chan 56	APP CRS 093°	Rwy Ldg 11245 TDZE 673 Apt Elev 680
--	------------------------	--

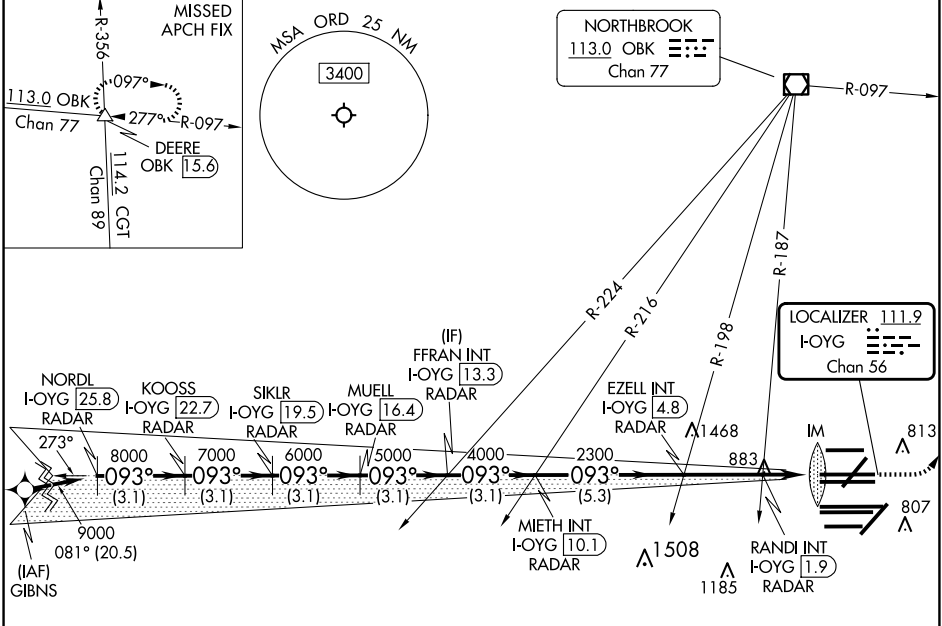
ILS or LOC RWY 9C

CHICAGO O'HARE INTL (ORD)

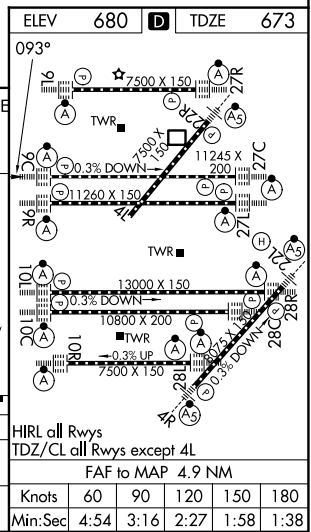
DME or RADAR required. From GIBNS: RNAV 1-GPS required. Aircraft not GPS equipped - RADAR required for procedure entry.
 Simultaneous approach authorized. For inop ALS, increase S-LOC 9C Cat C/D visibility to 1½ SM.

ALSF-2
 MISSED APPROACH: Climb to 1200 then climbing left turn to 4000 on heading 037° and OBK VOR/DME R-097 to DEERE INT/OBK 1.5.6 DME and hold.

D-ATIS 135.4 282.225	CHICAGO APP CON 119.0 292.125	O'HARE TOWER 121.15 348.0	GND CON (TWR CENTER) 124.125 (TWR NORTH) 118.05 (TWR SOUTH) 226.675 (ALL TWRs)	CLNC DEL 121.6	CPDLC
--	---	-------------------------------------	--	--------------------------	-------



CATEGORY	A	B	C	D
	1140/24	467 (500-½)	1140/50	467 (500-1)



EC-3, 16 APR 2026 to 14 MAY 2026

EC-3, 16 APR 2026 to 14 MAY 2026