

CHICAGO, ILLINOIS

AL-166 (FAA)

ILS PRM RWY 10C (SA CAT I) (CLOSE PARALLEL)

CHICAGO O'HARE INTL (ORD)

LOC/DME I-SXH 108.95 Chan 26(Y)	APP CRS 093°	Rwy Ldg 10540 TDZE 669 Apt Elev 680
--	------------------------	--

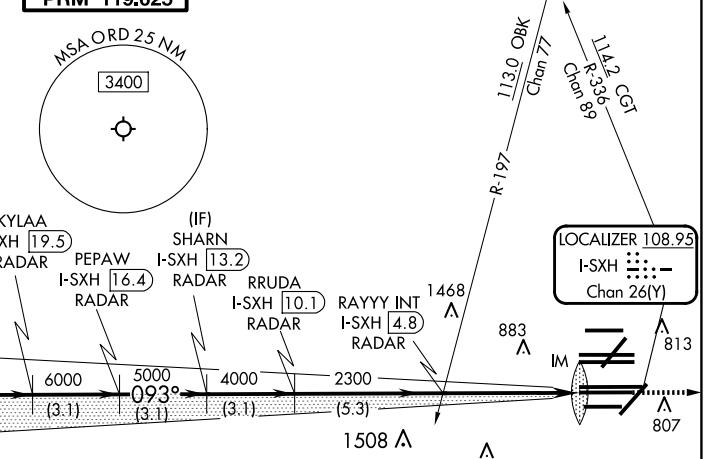
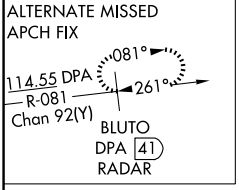
RNAV 1-GPS or RADAR required for procedure entry. DME or RADAR required.
From GIBNS: RNAV-1 GPS required.

Requires specific OPSPec, MSPEC, or LOA approval and use of HUD to DH. Simultaneous approach authorized. Use of FD or AP required during simultaneous operations. Dual VHF comm required. See additional requirements on AAUP.

ALSF-2

MISSED APPROACH: Climb to 4000 on heading 093° and CGT VORTAC R-336 to CGT VORTAC and hold.

D-ATIS 135.4 282.225	CHICAGO APP CON 119.0 292.125	O'HARE TOWER 120.75 348.0 PRM 119.625	GND CON (TWR CENTER) 124.125 (TWR NORTH) 118.05 (TWR SOUTH) 226.675 (ALL TWRS)	(TWR CENTER) (OBND) 121.75 (OBND) 121.9 (IBND)	CLNC DEL 121.6	CPDLC
--	---	---	--	--	--------------------------	-------

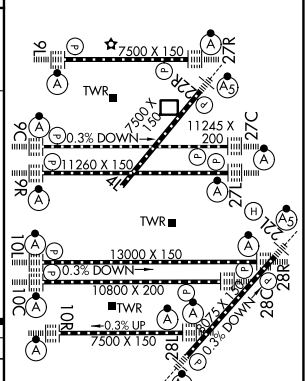
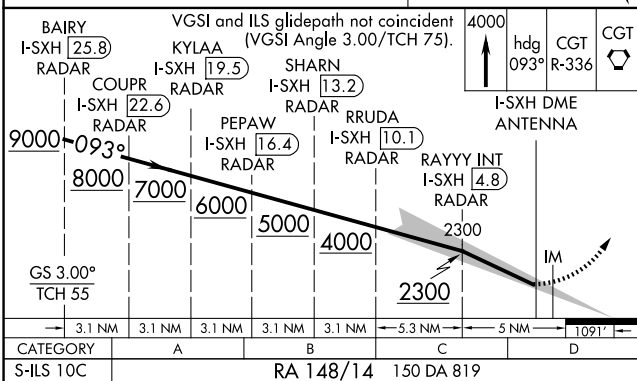


EC-3, 16 APR 2026 to 14 MAY 2026

EC-3, 16 APR 2026 to 14 MAY 2026



ELEV 680	D	TDZE 669
----------	---	----------



SA CATEGORY I ILS - SPECIAL AIRCREW & AIRCRAFT CERTIFICATION REQUIRED

RA 148/14 150 DA 819

HIRL all Rwys
TDZ/CL all Rwys except 4L

CHICAGO, ILLINOIS
Amdt 1A 03JAN19

41°59'N-87°54'W

CHICAGO O'HARE INTL (ORD)

ILS PRM RWY 10C (SA CAT I) (CLOSE PARALLEL)