

LOC/DME I-BYW <b>110.9</b> Chan 46	APP CRS <b>091°</b>	Rwy Ldg 7500 TDZE 680 Apt Elev 680
--	------------------------	---

# ILS Y or LOC Y RWY 10R

CHICAGO O'HARE INTL (ORD)

RNAV 1-GPS or RADAR required for procedure entry. DME or RADAR required.  
From GIBNS: RNAV-1 GPS required.

Simultaneous approach authorized.

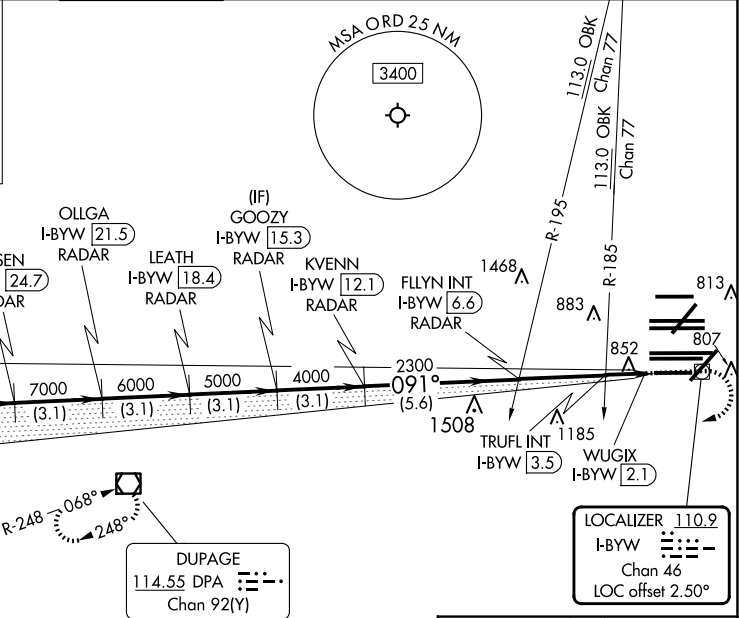
ALSF-2

MISSED APPROACH: Climb to 1200 then climbing right turn to 4000 direct DPA VOR/DME and hold.

D-ATIS <b>135.4</b> <b>282.225</b>	CHICAGO APP CON <b>119.0 292.125</b>	O'HARE TOWER <b>133.0 348.0</b>	GND CON (TWR CENTER) <b>124.125</b> (TWR NORTH) <b>118.05</b> (TWR SOUTH) <b>226.675</b> (ALL TWRS)	(TWR CENTER) <b>121.75</b> (OBND) <b>121.9</b> (IBND)	CLNC DEL <b>121.6</b>	CPDLC
--	---	------------------------------------	--	---	--------------------------	-------

ALTERNATE MISSED APCH FIX

JOLIET  
JOT  
112.3  
Chan 70



EC-3, 16 APR 2026 to 14 MAY 2026

EC-3, 16 APR 2026 to 14 MAY 2026

FERLL I-BYW 27.8 RADAR	OLLGA I-BYW 21.5 RADAR	GOOZY I-BYW 15.3 RADAR	FLYIN INT I-BYW 6.6 RADAR	TRUFL INT I-BYW 3.5 RADAR	WUGIX I-BYW 2.1 RADAR
9000	8000	7000	6000	5000	4000
GS 3.00° TCH 55					
*1220					
*LOC only.					
3.1 NM	3.1 NM	3.1 NM	3.1 NM	3.1 NM	0.6 0.8 0.4
CATEGORY	A		B		C
S-ILS 10R	930/24		250 (300-½)		
S-LOC 10R	1220/24	540 (600-½)	1220/55	540 (600-1)	
TRUFL FIX MINIMUMS (DUAL VOR RECEIVERS OR DME REQUIRED)					
S-LOC 10R	1120/24	440 (500-½)	1120/40	440 (500-¾)	

