

CHICAGO, ILLINOIS

AL-166 (FAA)

RNAV (GPS) PRM RWY 10C (CLOSE PARALLEL)

CHICAGO O'HARE INTL (ORD)

WAAS CH 81934 W10B	APP CRS 093°	Rwy Ldg 10540 TDZE 669 Apt Elev 680
--	------------------------	--

RNP APCH - GPS.

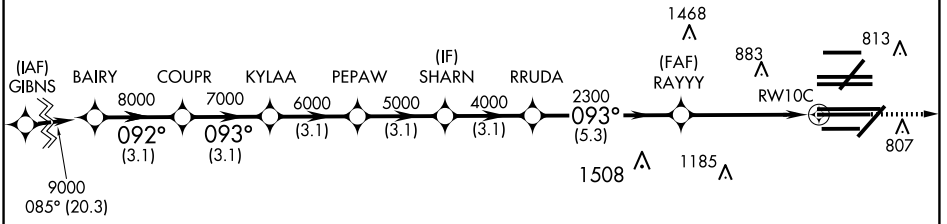
Simultaneous approach authorized. Dual VHF comm required. See additional requirements on AAUP. For uncompensated Baro-VNAV systems, LNAV/VNAV NA below -19°C or above 54°C. Rwy 10C helicopter visibility reduction below RVR 4000 NA. Use of FD or AP required during simultaneous operations.

ALSF-2

MISSED APPROACH: Climb to 4000 direct AGZED and on track 161° to CGT VORTAC and hold.

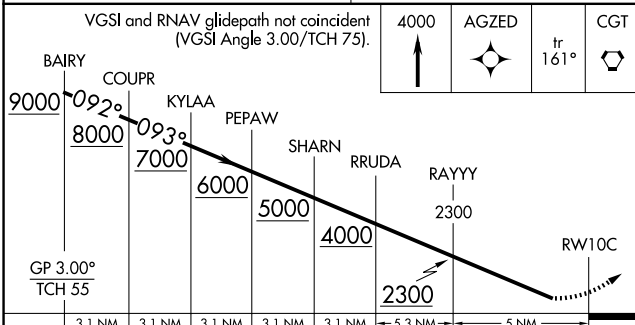
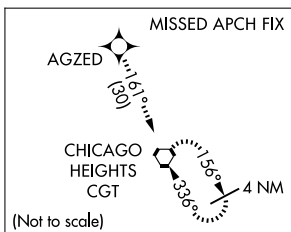
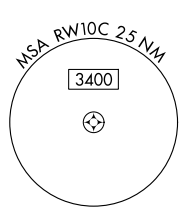
D-ATIS 135.4 282.225	CHICAGO APP CON 119.0 292.125	O'HARE TOWER 120.75 348.0 PRM 119.625	GND CON (TWR CENTER) 124.125 (TWR NORTH) 118.05 (TWR SOUTH) 226.675 (ALL TWRs)	(TWR CENTER) 121.75 (OBND) 121.9 (IBND)	CLNC DEL 121.6	CPDLC
--	---	---	--	---	--------------------------	-------

RADAR REQUIRED



EC-3, 16 APR 2026 to 14 MAY 2026

EC-3, 16 APR 2026 to 14 MAY 2026



	3.1 NM	3.1 NM	3.1 NM	3.1 NM	3.1 NM	5.3 NM	5 NM
CATEGORY	A		B		C	D	
LPV DA			869/18		200 (200-1/2)		
LNAV/VNAV DA			1062/40		393 (400-3/4)		

ELEV 680 TDZE 669

HIRL all Rwy's
TDZ/CL all Rwy's except 4L

CHICAGO, ILLINOIS
Orig-B 25JAN24

41°59'N-87°54'W

CHICAGO O'HARE INTL (ORD)

RNAV (GPS) PRM RWY 10C (CLOSE PARALLEL)