

CHICAGO, ILLINOIS

AL-166 (FAA)

RNAV (GPS) PRM RWY 28C

(CLOSE PARALLEL)

CHICAGO O'HARE INTL (ORD)

WAAS CH 53639 W28B	APP CRS 273°	Rwy Ldg 10800 TDZE 651 Apt Elev 680
--	------------------------	--

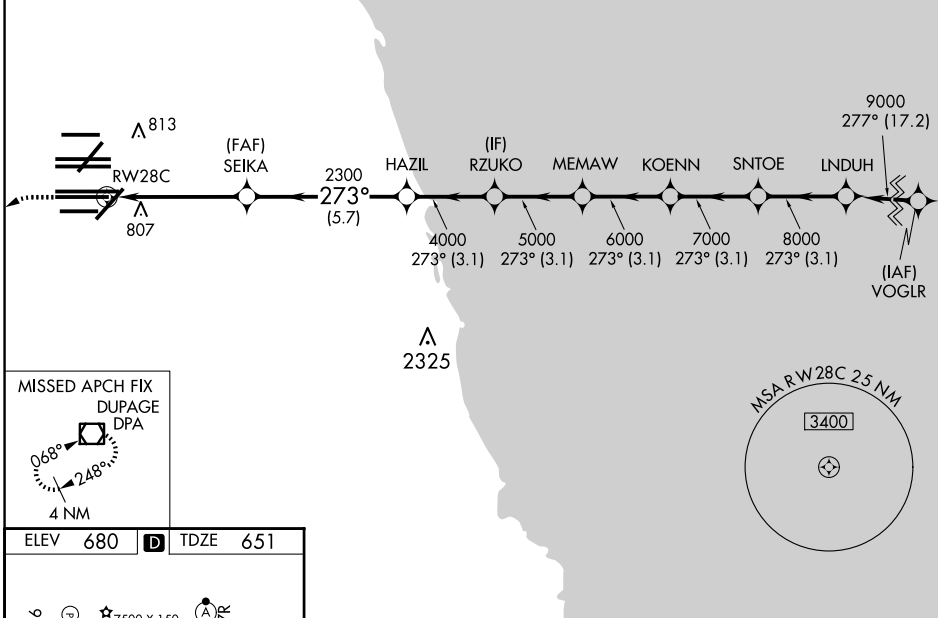
▼ For uncompensated Baro-VNAV systems, LNAV/VNAV NA below -19°C (-2°F) or above 54°C (130°F). DME/DME RNP-0.3 NA. Use of FD or AP providing RNAV track guidance required during simultaneous operations. Simultaneous approach authorized. Dual VHF comm required. See additional requirements on AAUP.



MISSED APPROACH:
Climb to 1100 then
climbing left turn to
4000 direct DPA
VOR/DME and hold.

D-ATIS 135.4 282.225	CHICAGO APP CON 119.0 292.125	O'HARE TOWER 120.75 348.0 PRM 119.625	GND CON 124.125 118.05 226.675 (ALL TWRS)	(TWR CENTER) 121.75 (OBND) 121.9 (IBND)	CLNC DEL 121.6	CPDLC
--	--	---	---	---	--------------------------	-------

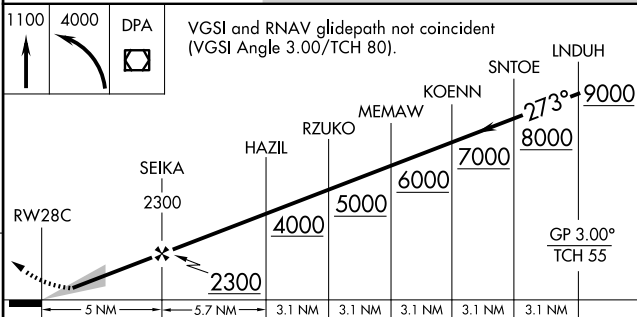
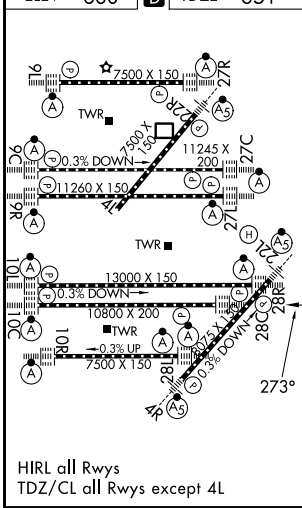
RADAR REQUIRED



EC-3, 16 APR 2026 to 14 MAY 2026

EC-3, 16 APR 2026 to 14 MAY 2026

ELEV 680	D	TDZE 651
-----------------	----------	-----------------



CATEGORY	A	B	C	D
LPV DA		851/18	200 (200-½)	
LNAV/VNAV DA		1094/50	443 (500-1)	

CHICAGO, ILLINOIS
Orig-A 17AUG17

41°59'N-87°54'W

CHICAGO O'HARE INTL (ORD)

RNAV (GPS) PRM RWY 28C (CLOSE PARALLEL)