

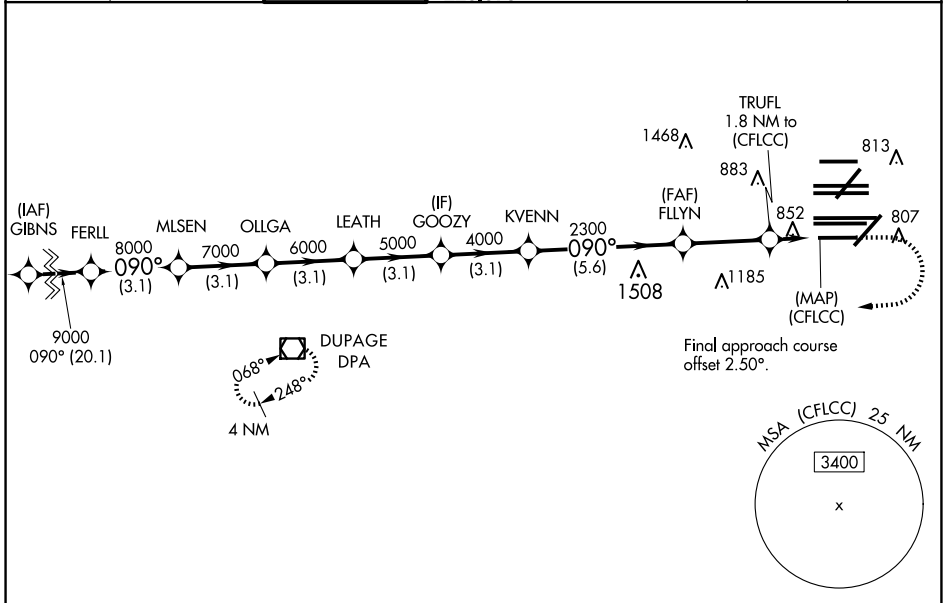
WAAS CH 77937 W10D	APP CRS 090°	Rwy Ldg TDZE Apt Elev	7500 680 680
--	------------------------	-----------------------------	---

RNAV (GPS) Y RWY 10R

CHICAGO O'HARE INTL (ORD)

RNP APCH	<p>Simultaneous approach authorized. For uncompensated Baro-VNAV systems, LNAV/VNAV NA below -19°C or above 54°C. LNAV procedure NA during simultaneous operations. Use of FD or AP providing RNAV track guidance required during simultaneous operations. For inop ALS, increase LNAV/VNAV all Cats visibility to 1 3/8 SM.</p>	ALSF-2 	MISSED APPROACH: Climb to 1200 then climbing right turn to 4000 direct DPA VOR/DME and hold.
----------	--	------------	--

D-ATIS 135.4 282.225	CHICAGO APP CON 119.0 292.125	O'HARE TOWER 133.0 348.0	GND CON 124.125 (TWR NORTH) 118.05 (TWR SOUTH) 226.675 (ALL TWRs)	(TWR CENTER) 121.75 (OBND) 121.9 (IBND)	CLNC DEL 121.6	CPDLC
--	--	------------------------------------	---	---	--------------------------	-------



	ELEV 680	TDZE 680	
	1200	4000	DPA
	*LNAV only.		
	GP 3.00	TCH 55	
	3.1 NM	3.1 NM	3.1 NM
	3.1 NM	3.1 NM	3.1 NM
	3.1 NM	3.1 NM	3.1 NM
	3.1 NM	3.1 NM	3.1 NM
	5.6 NM	3.1 NM	0.6
	1.2		
CATEGORY	A	B	C
LPV DA		930/24	250 (300-1/2)
LNAV/VNAV DA		1157/50	477 (500-1)
LNAV MDA	1120/24	440 (500-1/2)	1120/40 440 (500-3/4)

Plan view diagram showing waypoints and altitudes: FERLL (9000), MLSEN (7000), OLLGA (6000), LEATH (5000), GOOZY (4000), KVENN (2300), FLLYN (2300), TRUFL (1508), 852, 883, 813, 807. Distances between waypoints are 3.1 NM. Final approach course offset 2.50°. Includes a 25 NM MSA (CFLLC) circle with a 3400 ft MSL. HIRL all Rwy's TDZ/CL all Rwy's except 4L.

EC-3, 16 APR 2026 to 14 MAY 2026

EC-3, 16 APR 2026 to 14 MAY 2026