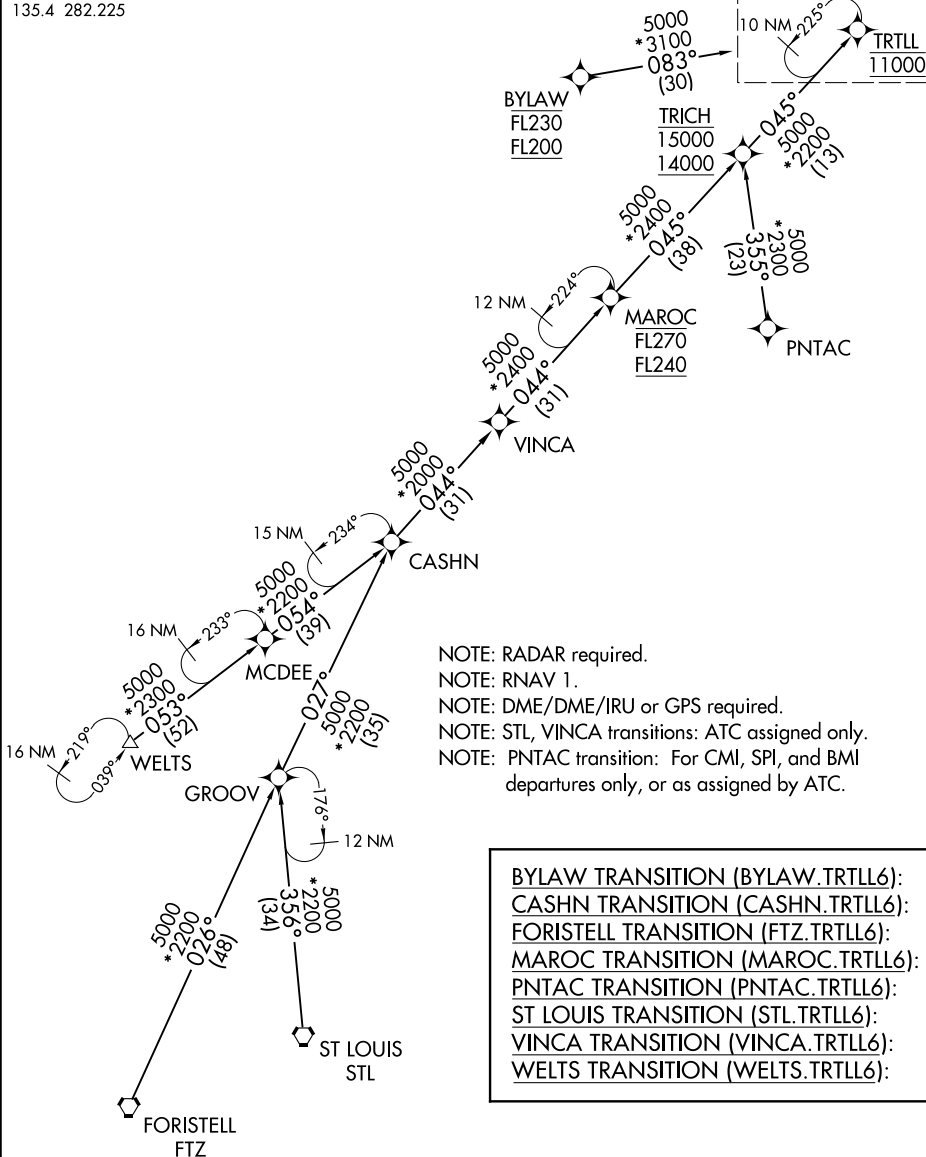


TRTLL SIX ARRIVAL (RNAV) Transition Routes

CHICAGO APP CON  
119.0 292.125  
D-ATIS  
135.4 282.225

See following page for  
Arrival Routes



- NOTE: RADAR required.
- NOTE: RNAV 1.
- NOTE: DME/DME/IRU or GPS required.
- NOTE: STL, VINCA transitions: ATC assigned only.
- NOTE: PNTAC transition: For CMI, SPI, and BMI departures only, or as assigned by ATC.

**BYLAW TRANSITION (BYLAW.TRLL6):**  
**CASHN TRANSITION (CASHN.TRLL6):**  
**FORISTELL TRANSITION (FTZ.TRLL6):**  
**MAROC TRANSITION (MAROC.TRLL6):**  
**PNTAC TRANSITION (PNTAC.TRLL6):**  
**ST LOUIS TRANSITION (STL.TRLL6):**  
**VINCA TRANSITION (VINCA.TRLL6):**  
**WELTS TRANSITION (WELTS.TRLL6):**

(CONTINUED ON FOLLOWING PAGE)

NOTE: Chart not to scale.

TRTLL SIX ARRIVAL (RNAV) Transition Routes

EC-3, 16 APR 2026 to 14 MAY 2026

EC-3, 16 APR 2026 to 14 MAY 2026

# TRTLL SIX ARRIVAL (RNAV) Arrival Routes

## ARRIVAL ROUTE DESCRIPTION

From TRTLL on track 045° to HIHRY, then on track 045° to RINNO.

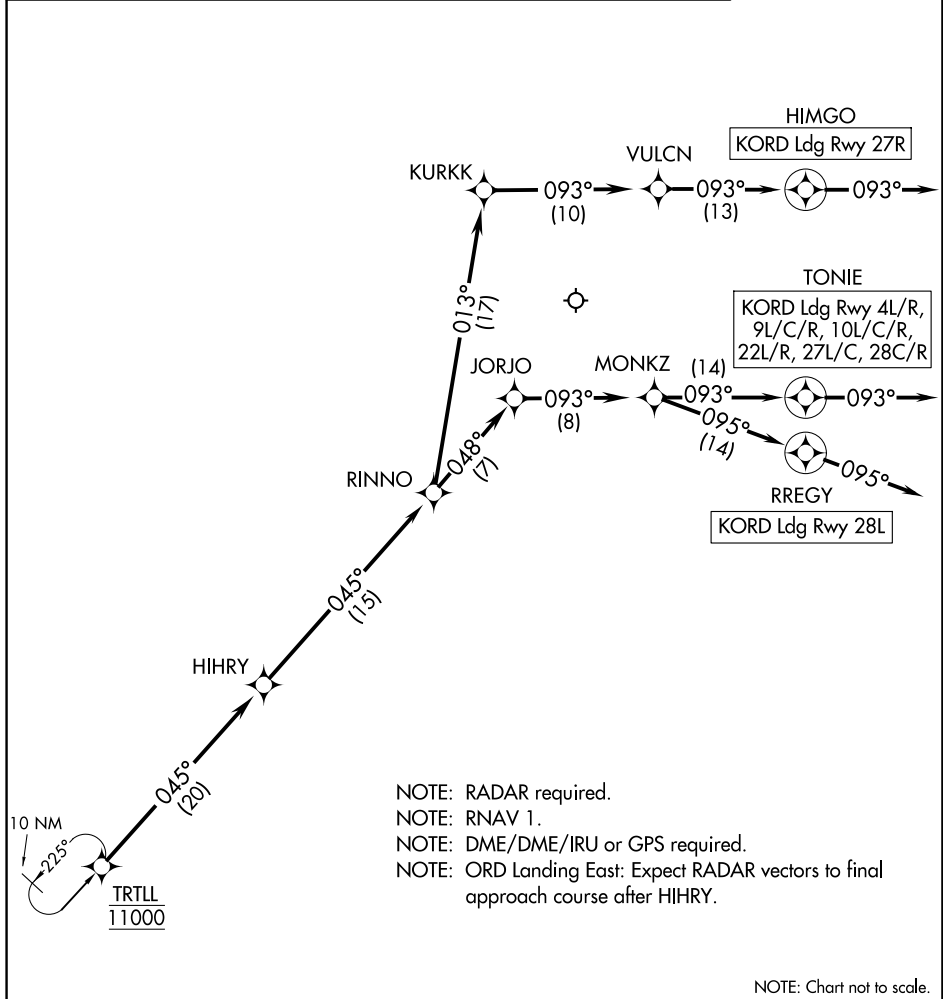
LANDING RWYS 4L/R, 9L/C/R, 10L/C/R, 22L/R, 27L/C, 28C/R:

From RINNO on track 048° to JORJO, then on track 093° to MONKZ, then on track 093° to TONIE, then on track 093°. Expect RADAR vectors to final approach course.

LANDING RWY 27R: From RINNO on track 013° to KURKK, then on track 093° to VULCN, then on track 093° to HIMGO, then on track 093°. Expect RADAR vectors to final approach course.

LANDING RWY 28L: From RINNO on track 048° to JORJO, then on track 093° to MONKZ, then on track 095° to RREGY, then on track 095°. Expect RADAR vectors to final approach course.

CHICAGO APP CON  
119.0 292.125  
D-ATIS  
135.4 282.225



- NOTE: RADAR required.
- NOTE: RNAV 1.
- NOTE: DME/DME/IRU or GPS required.
- NOTE: ORD Landing East: Expect RADAR vectors to final approach course after HIHRY.

NOTE: Chart not to scale.

EC-3, 16 APR 2026 to 14 MAY 2026

EC-3, 16 APR 2026 to 14 MAY 2026