

LOC I-BQK <b>108.5</b>	APP CRS <b>069°</b>	Rwy Ldg TDZE Apt Elev	<b>8001</b> <b>26</b> <b>26</b>
---------------------------	------------------------	-----------------------------	---------------------------------------

# ILS or LOC RWY 7

BRUNSWICK GOLDEN ISLES (BQK)

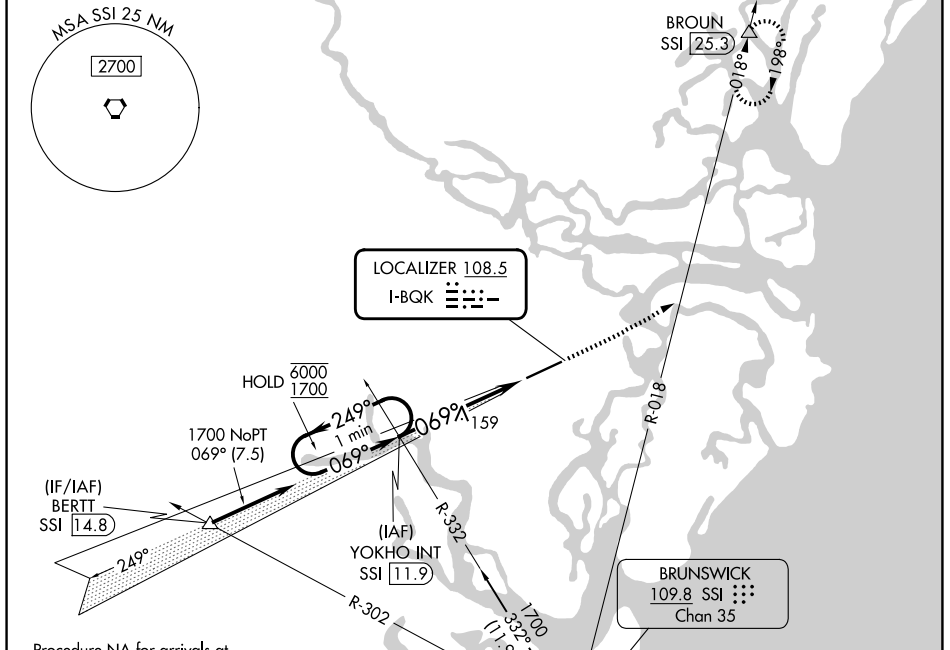
DME required.

▼  
▲ For inop ALS, increase S-LOC 7 Cat C/D visibility to 1½ SM.

MALSR  
▲

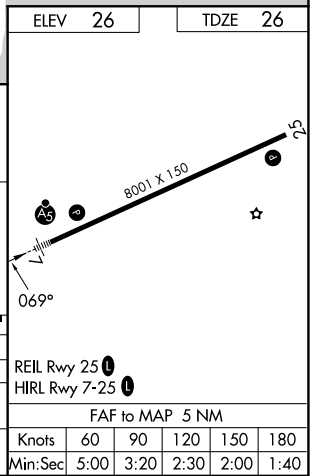
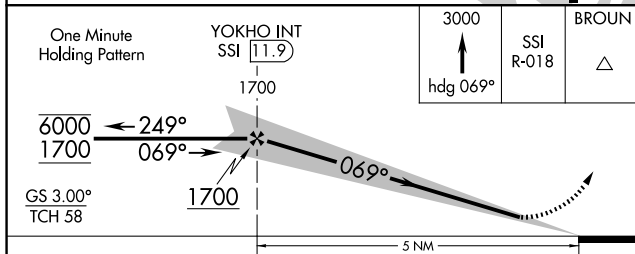
MISSED APPROACH: Climb to 3000 on heading 069° and on SSI VORTAC R-018 to BROUN/SSI 25.3 DME and hold.

AWOS-3 <b>124.175</b>	JACKSONVILLE CENTER <b>126.75 277.4</b>	UNICOM <b>123.0 (CTAF) 1</b>
--------------------------	--	---------------------------------



Procedure NA for arrivals at BERTT on T425 northwest bound.

ELEV 26	TDZE 26
---------	---------



CATEGORY	A	B	C	D
S-ILS 7		226-½	200 (200-½)	
S-LOC 7	420-½	394 (400-½)	420-⅝	394 (400-⅝)
CIRCLING	540-1	514 (600-1)	560-1½ 534 (600-1½)	800-2½ 774 (800-2½)

SE-4, 16 APR 2026 to 14 MAY 2026

SE-4, 16 APR 2026 to 14 MAY 2026