


WAAS CH 56501 W07A	APP CRS 069°	Rwy Ldg TDZE Apt Elev	8001 26 26
--	------------------------	-----------------------------	---------------------------------------

RNAV (GPS) RWY 7

BRUNSWICK GOLDEN ISLES (BQK)

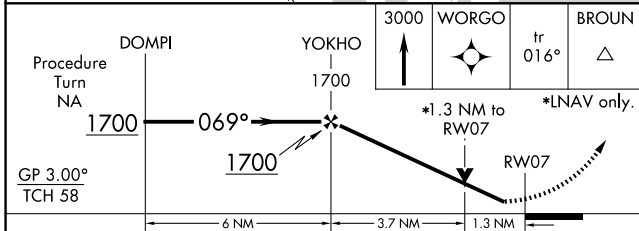
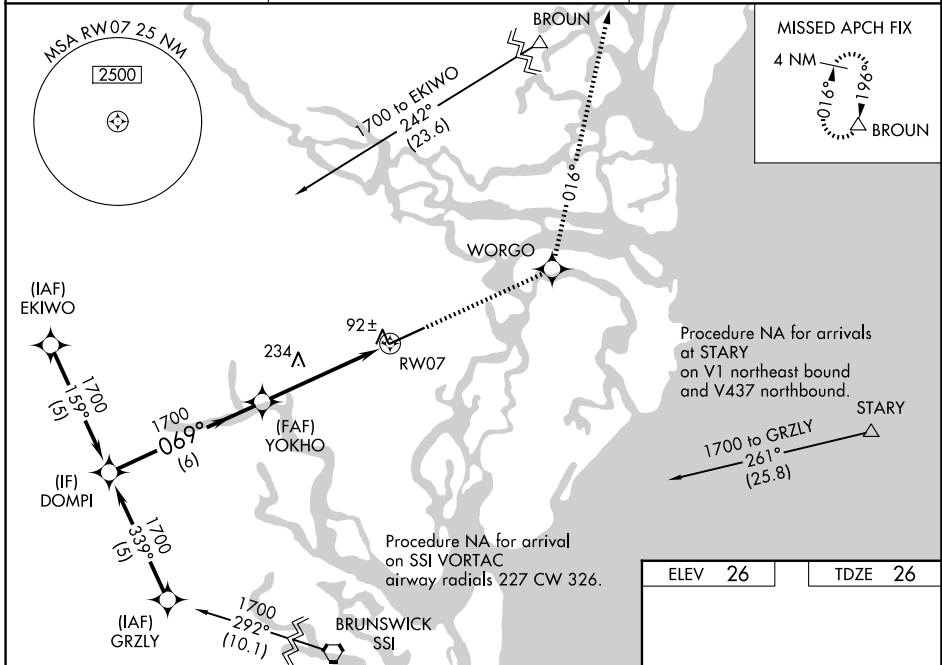
RNP APCH.

⚠ For uncompensated Baro-VNAV systems, LNAV/VNAV NA below -15°C or above 48°C. VDP and Baro-VNAV NA when using St Simons Island altimeter setting. When local altimeter setting not received, use St Simons Island altimeter setting; increase LPV DA to 245 feet, LNAV/VNAV DA to 505 feet and LNAV/VNAV visibility 1/2 SM; increase all MDAs 20 feet. For inop ALS, increase LNAV Cat C/D visibility to 1 1/2 SM. For inop ALS when using St Simons Island altimeter setting, increase LNAV/VNAV all Cats and LNAV Cat C/D visibility to 1 3/4 SM.

MALSR 

MISSED APPROACH: Climb to 3000 direct WORG0 and via track 016° to BROUN and hold.

AWOS-3 124.175	JACKSONVILLE CENTER 126.75 277.4	UNICOM 123.0 (CTAF)
--------------------------	--	-------------------------------



CATEGORY	A	B	C	D
LPV DA		226-1/2	200 (200-1/2)	
LNAV/VNAV DA		486-7/8	460 (500-7/8)	
LNAV MDA	500-1/2	474 (500-1/2)	500-1	474 (500-1)
CIRCLING	540-1	514 (600-1)	560-1 1/2 534 (600-1 1/2)	800-2 1/2 774 (800-2 1/2)

ELEV 26	TDZE 26
---------	---------

REIL Rwy 25 **Ⓛ**
HIRL Rwy 7-25 **Ⓛ**

SE-4, 16 APR 2026 to 14 MAY 2026

SE-4, 16 APR 2026 to 14 MAY 2026