

GOLDSBORO, NORTH CAROLINA

HI-ILS or LOC Z RWY 8

LOC I- GSB 109.3	APCH CRS 081°	Rwy Idg 11,760 TDZE 73 Arprt Elev 109
-----------------------------------	-------------------------	--

[USAF]

SEYMOUR JOHNSON AFB (KGSB)

RADAR or DME required.



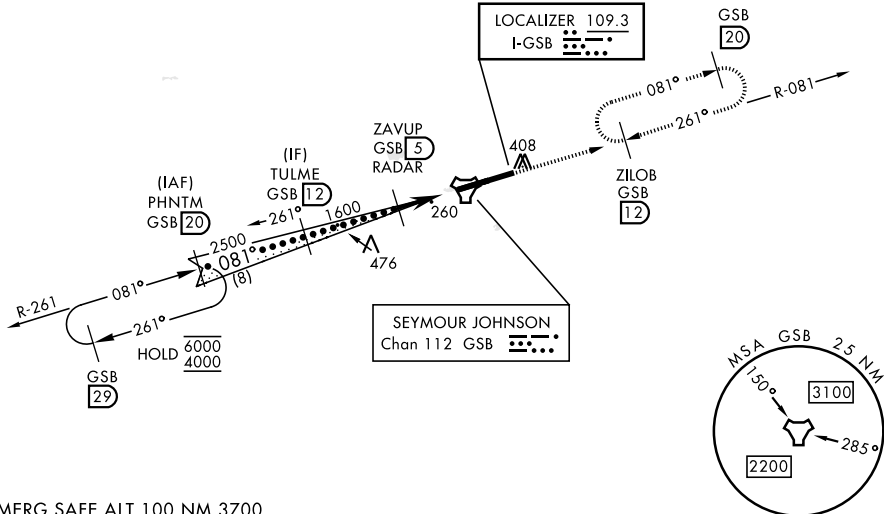
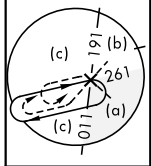
MISSED APPROACH: Climb to 2300 via GSB R-081 to ZILOB and hold.

- * When ALS inop, increase RVR to 40 and vis to 3/4 mile.
- ** When ALS inop, increase vis to 1 3/8 miles.
- *** Circling N of Rwy 8-26 not authorized.

ATIS ★ 317.625	APP CON 123.7 290.9 (258°-110°) 119.7 273.6 (111°-257°)	TOWER ★ 126.25 370.875	GND CON 132.45 275.8	CLNC DEL 128.025 270.8
--------------------------	---	----------------------------------	--------------------------------	----------------------------------

482

CAUTION: Autopilot coupled operations not authorized below 266' MSL.



SE-2, 16 APR 2026 to 14 MAY 2026

EMERG SAFE ALT 100 NM 3700

VGSi and ILS glidepath not coincident (VGSi Angle 3.00/TCH 55).			ELEV 109	TDZE 73
			ZILOB R-081 12	
CATEGORY	C	D	E	
S-ILS 8*	273/24	200	(200-1/2)	
S-LOC 8**	520/45	447	(500-3/4)	
*** CIRCLING	680-1 1/2 571 (600-1 1/2)	740-2 631 (700-2)	740-2 1/4 631 (700-2 1/4)	
HRL Rwy 8-26				FAF to MAP 4.1 NM
				Knots 120 140 160 180 200
				Min:Sec 2:03 1:45 1:32 1:22 1:14

GOLDSBORO, NORTH CAROLINA

35°20'N-77°58'W

SEYMOUR JOHNSON AFB (KGSB)

Amdt 8 17APR25

HI-ILS or LOC Z RWY 8