

HI-TACAN Z RWY 26

TACAN Chan 112	GSB 261°	APCH CRS 261°	Rwy ldg 11,760 TDZE 109 Arprt Elev 109
--------------------------	--------------------	-------------------------	---

[USAF]

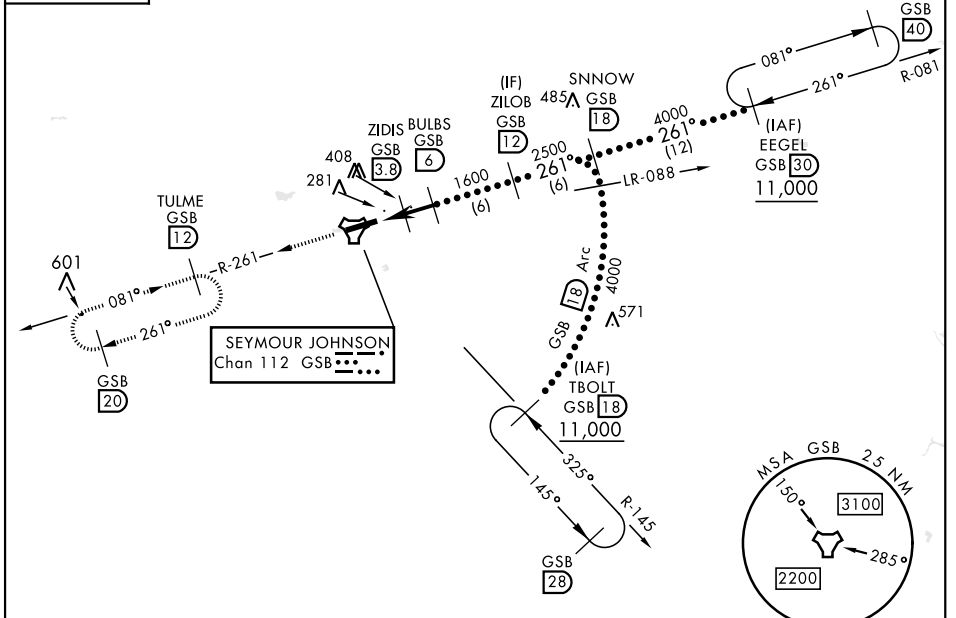
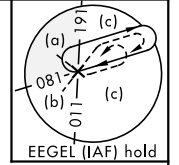
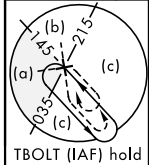
SEYMOUR JOHNSON AFB (KGSB)

▼ * When ALS inop, increase vis to 1¼ miles.
 ** Circling N of Rwy 8-26 not authorized.



MISSED APPROACH: Climb to 2200 via GSB R-261 to TULME and hold.

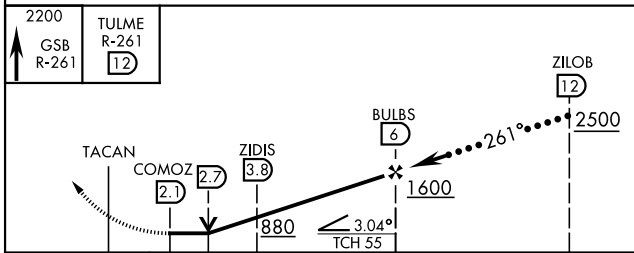
ATIS ★ 317.625	APP CON 123.7 290.9 (258°-110°) 119.7 273.6 (111°-257°)	TOWER ★ 126.25 370.875	GND CON 132.45 275.8	CLNC DEL 128.025 270.8
--------------------------	---	----------------------------------	--------------------------------	----------------------------------



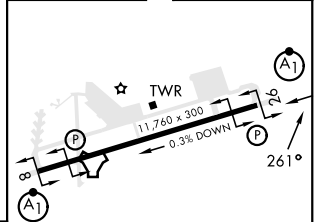
SE-2, 16 APR 2026 to 14 MAY 2026

SE-2, 16 APR 2026 to 14 MAY 2026

EMERG SAFE ALT 100 NM 3700



ELEV 109	TDZE 109
----------	----------



CATEGORY	C	D	E
S-26 *	540/40	431 (500-¾)	
** CIRCLING	680-1½ 571 (600-1½)	740-2 631 (700-2)	740-2¼ 631 (700-2¼)

HIRL Rwy 8-26

GOLDSBORO, NORTH CAROLINA 35°20'N-77°58'W SEYMOUR JOHNSON AFB (KGSB)

Amdt 8 03NOV22

HI-TACAN Z RWY 26