

GOLDSBORO, NORTH CAROLINA

TACAN Y RWY 26

TACAN GSB Chan 112	APCH CRS 261°	Rwy ldg 11,760 TDZE 109 Arprt Elev 109
---------------------------	----------------------	---

[USAF]

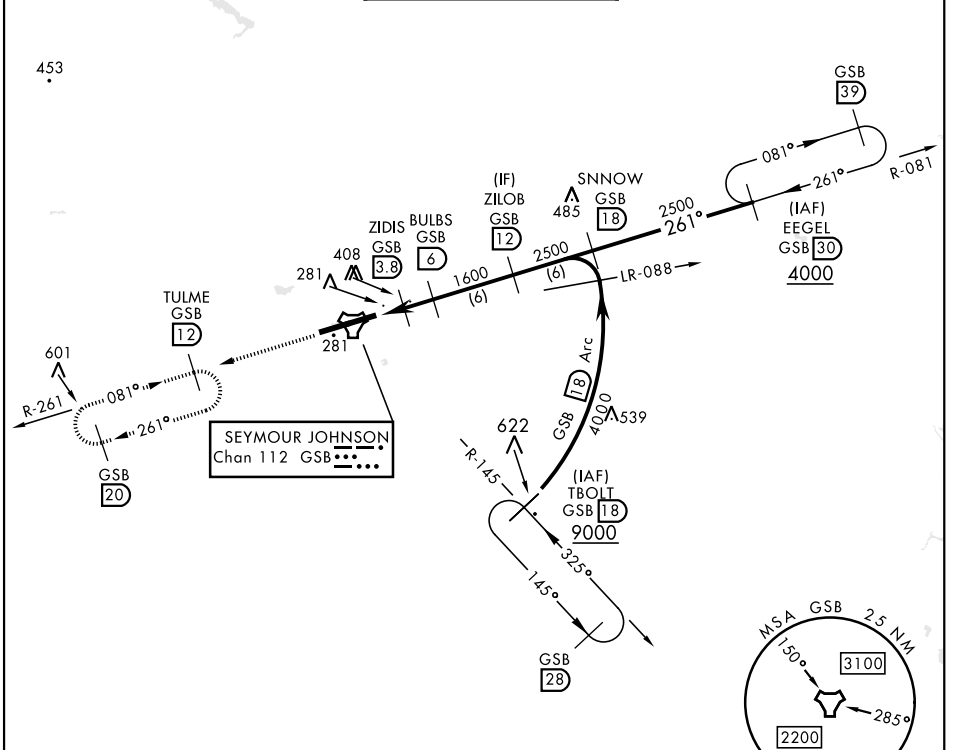
SEYMOUR JOHNSON AFB (KGSB)

▼ * When ALS inop, increase CAT AB RVR to 55, vis to 1 mile, CAT CDE vis to 1½ miles.
 ** Circling N of Rwy 8-26 not authorized.



MISSED APPROACH: Climb to 2200 via GSB R-261 to TULME and hold.

ATIS ★ 317.625	APP CON 123.7 290.9 (258°-110°) 119.7 273.6 (111°-257°)	TOWER ★ 126.25 370.875	GND CON 132.45 275.8	CLNC DEL 128.025 270.8
-----------------------	--	-------------------------------	-----------------------------	-------------------------------

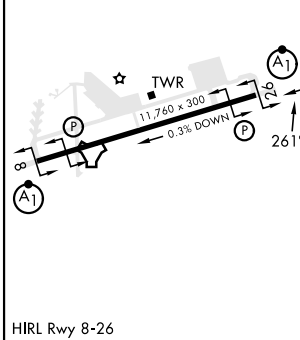


SE-2, 16 APR 2026 to 14 MAY 2026

SE-2, 16 APR 2026 to 14 MAY 2026

EMERG SAFE ALT 100 NM 3700

ELEV 109	TDZE 109
----------	----------



GOLDSBORO, NORTH CAROLINA
 Amdt 8 03NOV22

2200 GSB R-261	TULME R-261 12	ZILOB 12 2500	BULBS 6 1600	TACAN	COMOZ 2.7 2.1	ZIDIS 3.8 880	3.04° TCH 55
		0.6		1.7 NM		2.2 NM	
CATEGORY	A	B	C	D	E		
S-26 *	540/24	431 (500-½)	540/40	431 (500-¾)			
CIRCLING **	580-1 471 (500-1)	600-1 491 (500-1)	680-1½ 571 (600-1½)	740-2 631 (700-2)	740-2¼ 631 (700-2¼)		

35° 20'N-77° 58'W

SEYMOUR JOHNSON AFB (KGSB)

TACAN Y RWY 26