

LOC I-GRI <b>111.9</b>	APP CRS <b>173°</b>	Rwy Ldg <b>7002</b>
		TDZE <b>1844</b>
		Apt Elev <b>1847</b>

# LOC/DME BC RWY 17

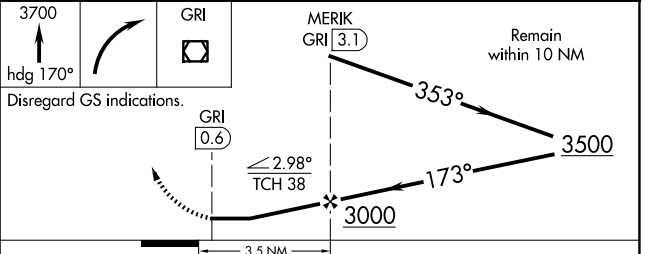
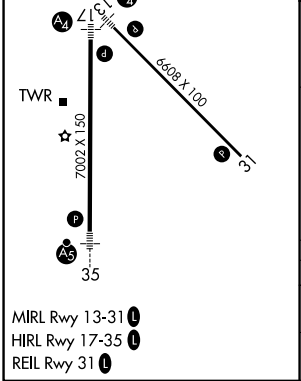
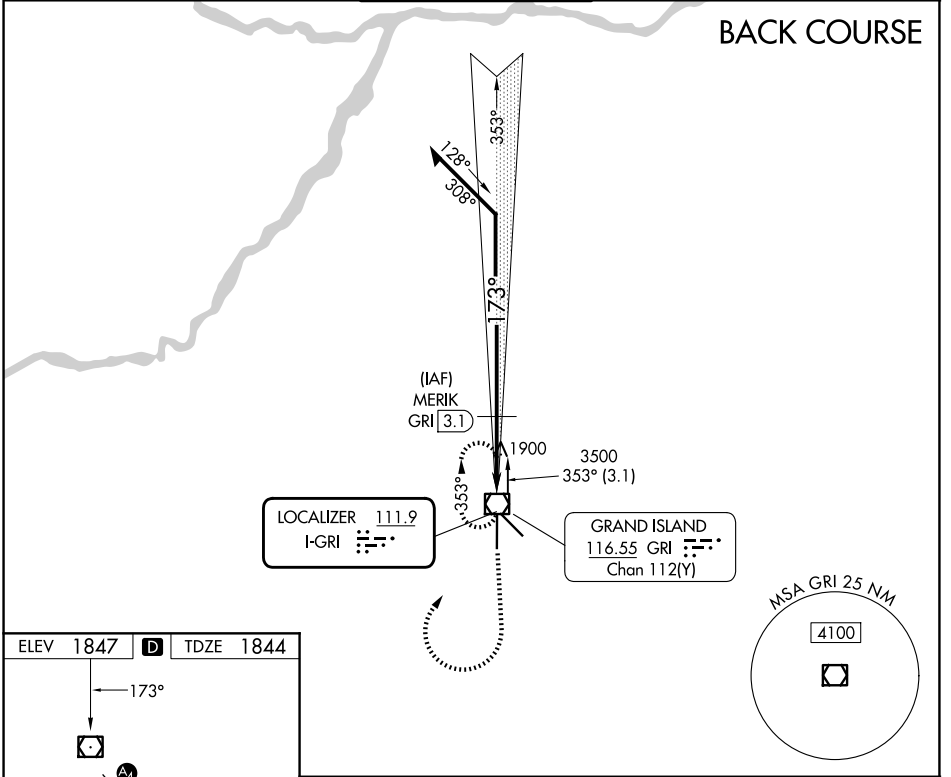
CENTRAL NEBRASKA RGNL (GRI)

Simultaneous reception of I-GRI and GRI DME required. When local altimeter setting not received, use Aurora altimeter setting and increase all MDA 60 feet, and S-17 Cat D visibility ¼ SM and Circling Cat C/D visibility ¼ SM.

MALS MISSED APPROACH: Climb to 3700 on heading 170° then right turn direct GRI VOR/DME and hold.

ATIS <b>127.4</b>	MINNEAPOLIS CENTER <b>119.4 278.8</b>	GRAND ISLAND TOWER * <b>118.2 (CTAF) 0 259.3</b>	GND CON <b>121.9 259.3</b>	UNICOM <b>122.95</b>
----------------------	--	---	-------------------------------	-------------------------

## BACK COURSE



CATEGORY	A	B	C	D
S-17	2160-¾ 316 (400-¾)			2160-1 316 (400-1)
CIRCLING	2300-1	453 (500-1)	2400-1½ 553 (600-1½)	2560-2¼ 713 (800-2¼)

NC-2, 16 APR 2026 to 14 MAY 2026

NC-2, 16 APR 2026 to 14 MAY 2026