

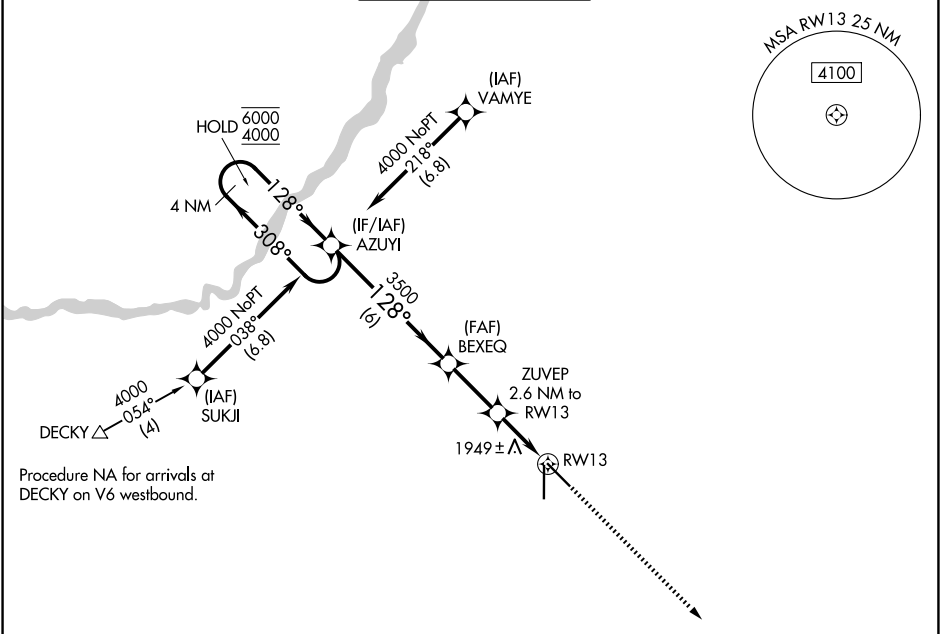
APP CRS	Rwy Ldg	6608
128°	TDZE	1842
	Apt Elev	1847

RNAV (GPS) RWY 13

CENTRAL NEBRASKA RGNL (GRI)

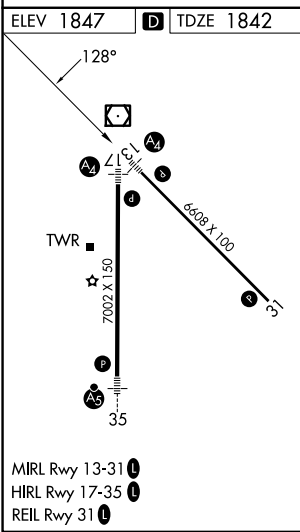
RNP APCH - GPS.		MALS	MISSED APPROACH: Climb to 4100 direct AGEKY and hold.	

ATIS 127.4	MINNEAPOLIS CENTER 119.4 278.8	GRAND ISLAND TOWER * 118.2 (CTAF) 0 259.3	GND CON 121.9 259.3	UNICOM 122.95
----------------------	--	---	-------------------------------	-------------------------



NC-2, 16 APR 2026 to 14 MAY 2026

NC-2, 16 APR 2026 to 14 MAY 2026



VGSi and descent angles not coincident (VGSi Angle 3.00/TCH 35).			
4 NM Holding Pattern	AZUYI	BEXEQ	ZUVEP 2.6 NM to RW13
6000 ← 308°	→ 128°	→ 128°	→ 300° TCH 45
4000		3500	2700
6 NM		2.5 NM	1.5 NM → 1 NM
CATEGORY	A	B	C
LNAV MDA	2200-3/4 358 (400-3/4)		
CIRCLING	2300-1 453 (500-1)	2400-1 1/2 553 (600-1 1/2)	2560-2 1/4 713 (800-2 1/4)