

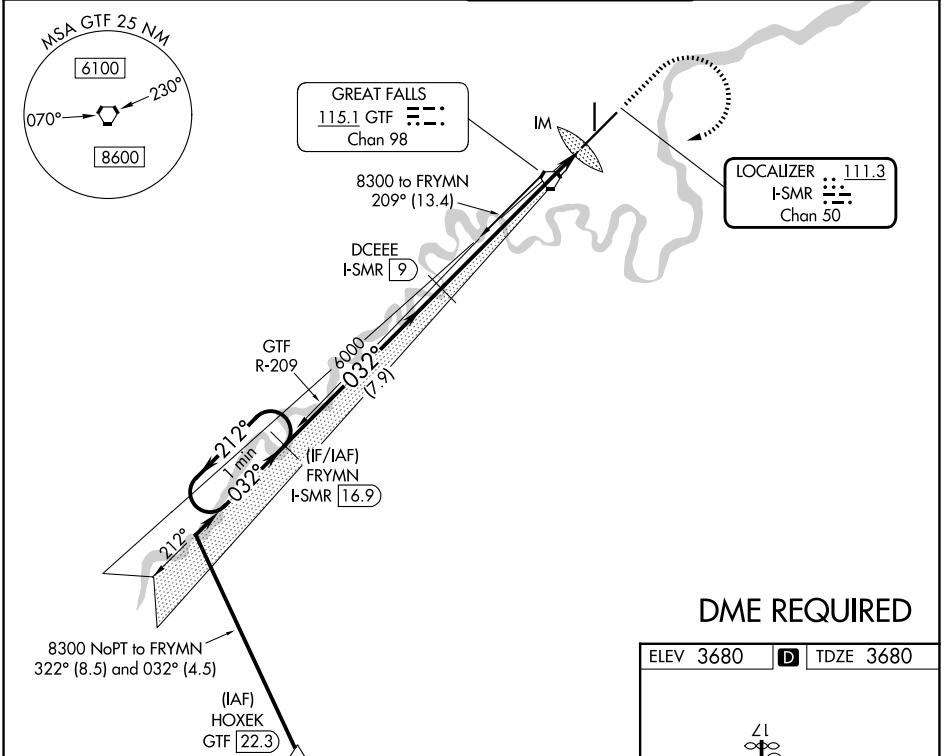
LOC/DME I-SMR <b>111.3</b> Chan 50	APP CRS <b>032°</b>	Rwy Ldg <b>10502</b> TDZE <b>3680</b> Apt Elev <b>3680</b>
--	------------------------	--

# ILS or LOC RWY 3

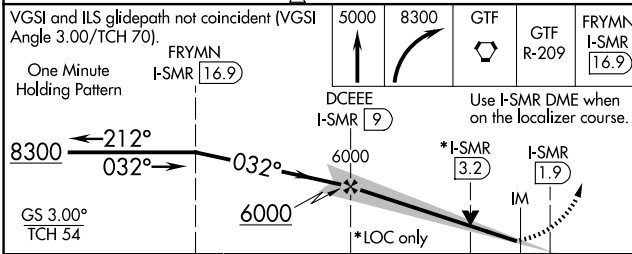
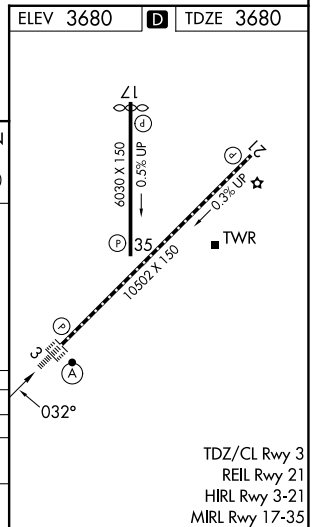
GREAT FALLS INTL (GTF)

	DME required.		MISSED APPROACH: Climb to 5000 then climbing right turn to 8300 direct GTF VORTAC then on GTF VORTAC R-209 to FRYMN/I-SMR 16.9 DME and hold.

ATIS <b>126.6 269.0</b>	GREAT FALLS APP CON <b>128.6 379.175</b>	GREAT FALLS TOWER <b>118.7 282.2</b>	GND CON <b>121.7 348.6</b>
----------------------------	---	---	-------------------------------



## DME REQUIRED



CATEGORY	A	B	C	D
S-ILS 3		3880/18	200 (200-½)	
S-LOC 3	4140/24	460 (500-½)	4140/45	460 (500-¾)
CIRCLING	4140-1	460 (500-1)	4340-1¾ 660 (700-1¾)	4420-2¼ 740 (800-2¼)

TDZ/CL Rwy 3  
REIL Rwy 21  
HIRL Rwy 3-21  
MIRL Rwy 17-35

NW-1, 16 APR 2026 to 14 MAY 2026

NW-1, 16 APR 2026 to 14 MAY 2026