

|             |          |              |
|-------------|----------|--------------|
| APP CRS     | Rwy Ldg  | <b>10502</b> |
| <b>032°</b> | TDZE     | <b>3680</b>  |
|             | Apt Elev | <b>3680</b>  |

# RNAV (RNP) Z RWY 3

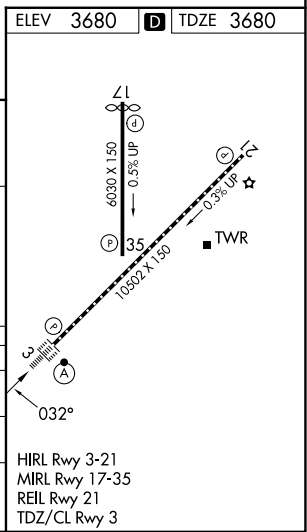
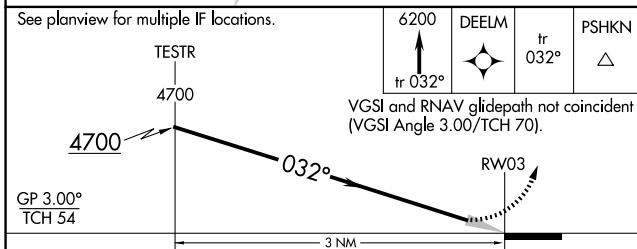
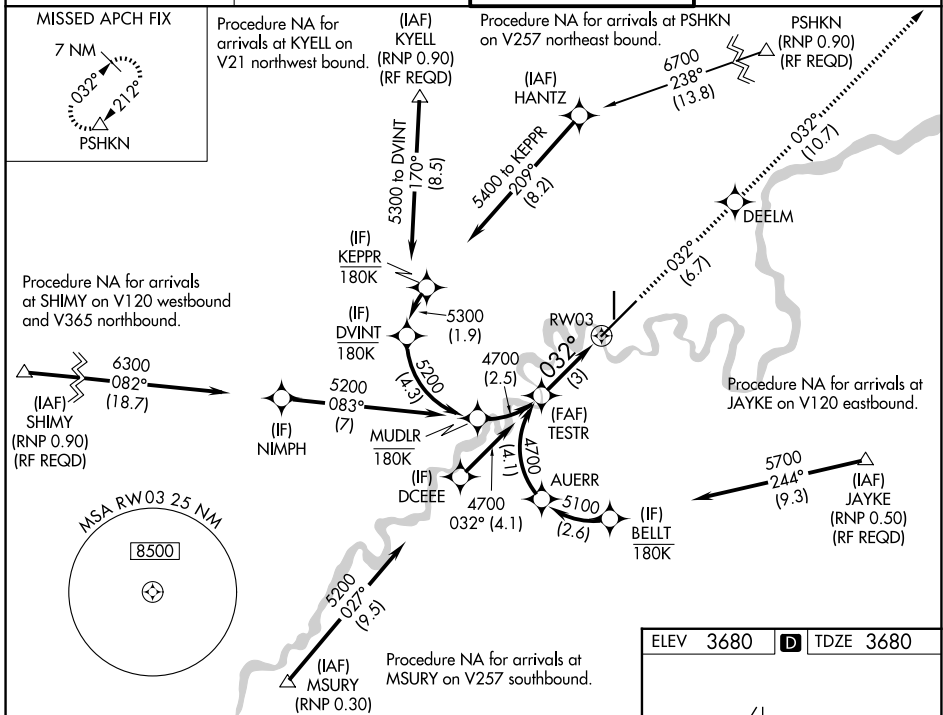
GREAT FALLS INTL (GTF)

**GPS required.** For uncompensated Baro-VNAV systems, procedure NA below -22°C or above 40°C. For inoperative ALS increase RNP 0.10 DA visibility all Cats to RVR 4500, increase RNP 0.30 DA visibility all Cats to RVR 6000.

**ALS-F-2**

**MISSED APPROACH:** Climb to 6200 on track 032° to DEELM and on track 032° to PSHKN and hold.

|                                   |  |  |                                      |
|-----------------------------------|--|--|--------------------------------------|
| <b>ATIS</b><br><b>126.6 269.0</b> | <b>GREAT FALLS APP CON</b><br><b>128.6 379.175</b> | <b>GREAT FALLS TOWER</b><br><b>118.7 282.2</b> | <b>GND CON</b><br><b>121.7 348.6</b> |
|-----------------------------------|--|--|--------------------------------------|



| CATEGORY    | A | B       | C           | D |
|-------------|---|---------|-------------|---|
| RNP 0.10 DA |   | 3990/24 | 310 (400-½) |   |
| RNP 0.30 DA |   | 4079/45 | 399 (400-¾) |   |

**AUTHORIZATION REQUIRED**

NW-1, 16 APR 2026 to 14 MAY 2026

NW-1, 16 APR 2026 to 14 MAY 2026