

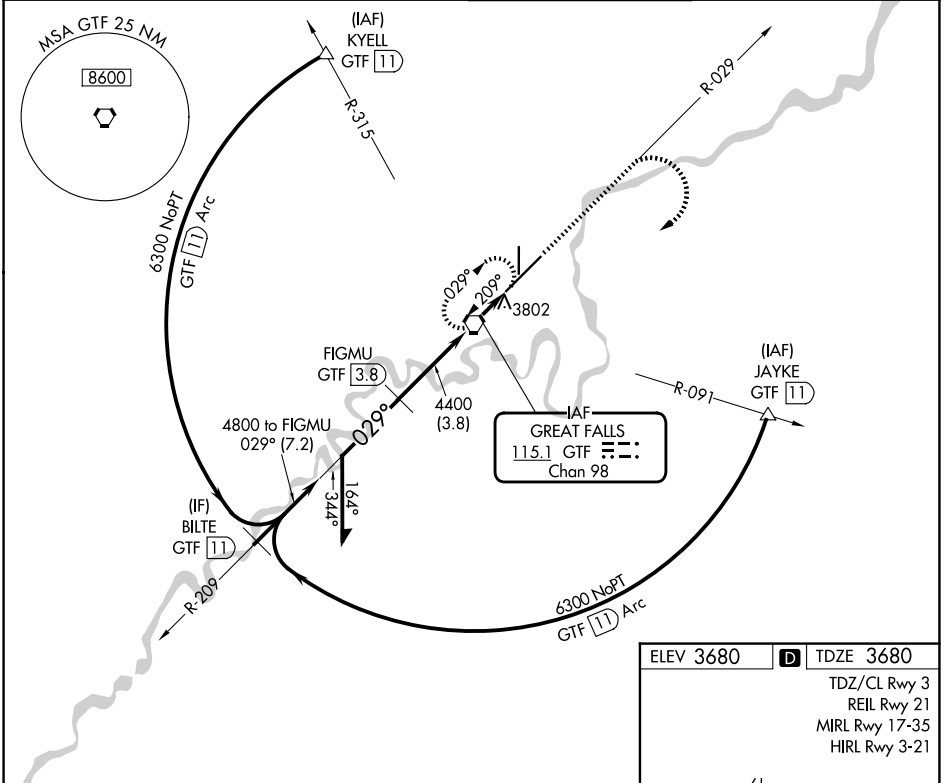
VORTAC GTF 115.1 Chan 98	APP CRS 029°	Rwy Ldg 10502 TDZE 3680 Apt Elev 3680
--	------------------------	--

VOR RWY 3

GREAT FALLS INTL (GTF)

DME required.	ALSF-2 	MISSED APPROACH: Climb to 5000 on GTF VORTAC R-029 then climbing right turn to 6300 direct GTF VORTAC and hold, continue climb-in-hold to 6300.
---------------	------------	---

ATIS 126.6 269.0	GREAT FALLS APP CON 128.6 379.175	GREAT FALLS TOWER 118.7 282.2	GND CON 121.7 348.6
----------------------------	---	---	-------------------------------

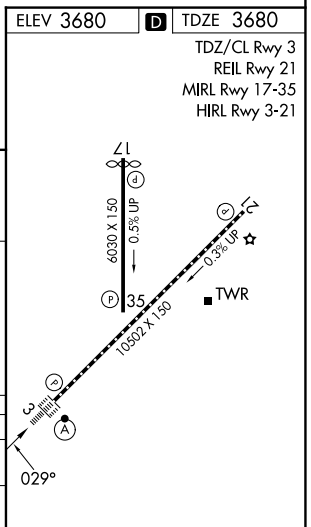


VGSI and descent angles not coincident (VGSI Angle 3.00/TCH 70).
Remain within 10 NM

	5000	6300	GTF
	GTF R-029		

6300	4800	4400	3680
209°	029°	3.73° TCH 71	
	3.8 NM	0.7	1 NM

CATEGORY	A	B	C	D
S-3	4060/24	380 (400-½)		NA
CIRCLING	4140-1	460 (500-1)	4320-1¾ 640 (700-1¾)	NA



NW-1, 16 APR 2026 to 14 MAY 2026

NW-1, 16 APR 2026 to 14 MAY 2026