

LOC/DME I-LLG 109.55 Chan 32(Y)	APP CRS 054°	Rwy Ldg TDZE 9000 916 Apt Elev 926
--	------------------------	---

ILS RWY 5L (CAT II & III)

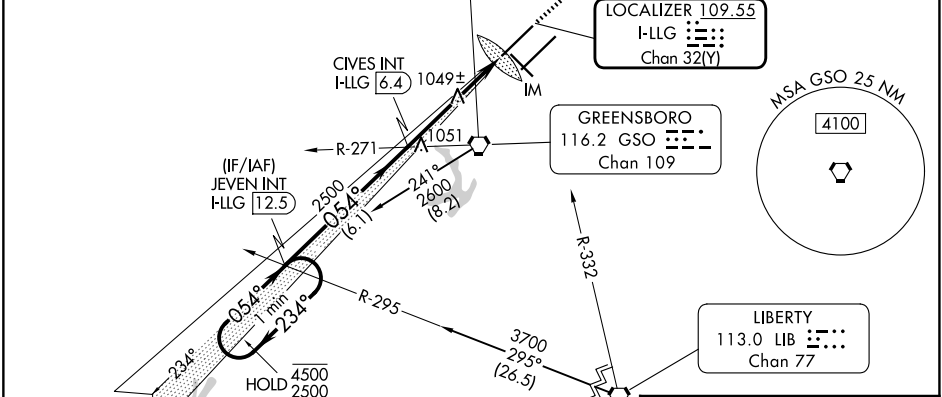
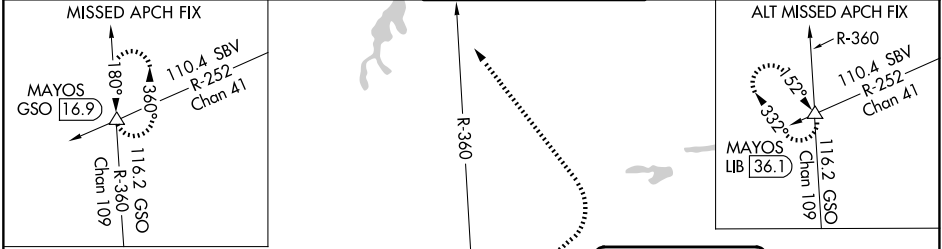
PIEDMONT TRIAD INTL (GSO)

DME or RADAR required for procedure entry at LIB VORTAC.
Simultaneous approach authorized.

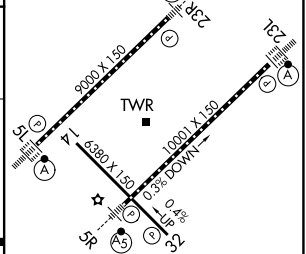
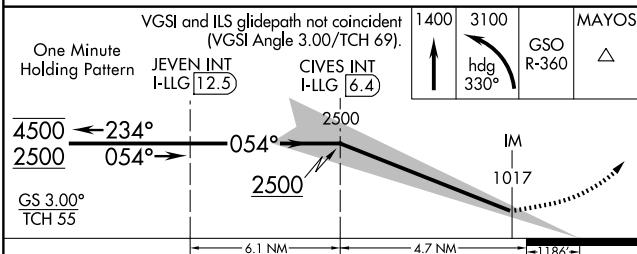


MISSED APPROACH: Climb to 1400 then climbing left turn to 3100 on heading 330° and GSO VORTAC R-360 to MAYOS INT/GSO 16.9 DME and hold.

D-ATIS 128.55	GREENSBORO APP CON 124.35 269.225 126.6 327.075 (250°-049°) (050°-249°)	GREENSBORO TOWER 119.1 290.325	GND CON 121.9 348.6	CLNC DEL 121.75
-------------------------	--	--	-------------------------------	---------------------------



ELEV 926	D TDZE 916
----------	-------------------



CATEGORY	A	B	C	D
S-ILS 5L	CAT II RA 113/12 100 DA 1016			
S-ILS 5L	CAT III RVR 06			

CATEGORY II & III ILS - SPECIAL AIRCREW & AIRCRAFT CERTIFICATION REQUIRED

TDZ/CL Rwy 5L, 23R and 23L
REIL Rwy 32
HIRL Rwy 14-32, 5R-23L and 5L-23R

SE-2, 16 APR 2026 to 14 MAY 2026

SE-2, 16 APR 2026 to 14 MAY 2026