

WAAS CH <b>97710</b> <b>W23A</b>	APP CRS <b>234°</b>	Rwy Ldg TDZE Apt Elev	<b>9601</b> <b>889</b> <b>926</b>
--	------------------------	-----------------------------	---

# RNAV (GPS) RWY 23L

PIEDMONT TRIAD INTL (GSO)

RNP APCH - GPS.

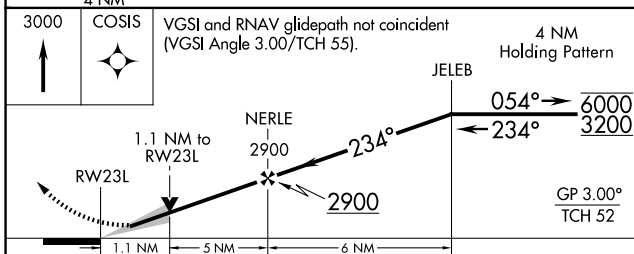
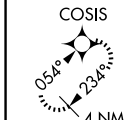
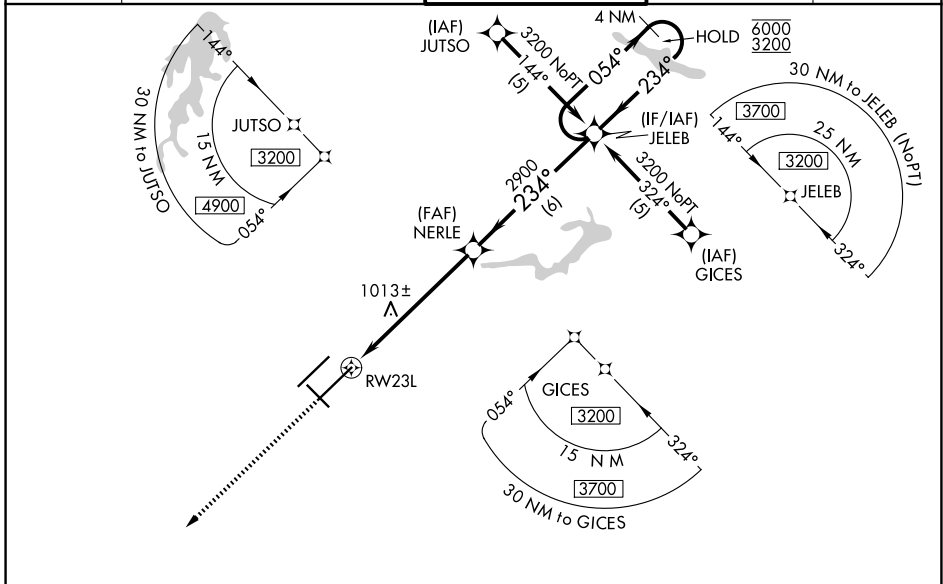
Simultaneous approach authorized. LNAV procedure NA during simultaneous operations.  
Use of FD or AP required during simultaneous operations. For uncompensated Baro-VNAV systems, LNAV/VNAV NA below -16°C or above 54°C.

ALSF-2

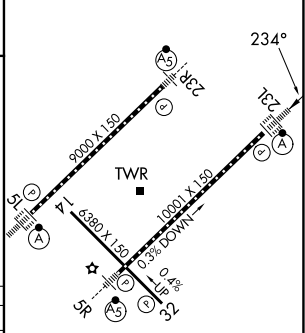


MISSED APPROACH:  
Climb to 3000 direct  
COSIS and hold.

D-ATIS <b>128.55</b>	GREENSBORO APP CON <b>124.35 269.225</b> (250°-049°) <b>126.6 327.075</b> (050°-249°)	GREENSBORO TOWER <b>119.1 290.325</b>	GND CON <b>121.9 348.6</b>	CLNC DEL <b>121.75</b>
-------------------------	---	--	-------------------------------	---------------------------



ELEV 926	<b>D</b> TDZE 889
----------	-------------------



CATEGORY	A	B	C	D
LPV DA		1089/18	200 (200-½)	
LNAV/VNAV DA		1283/35	394 (400-¾)	
LNAV MDA	1280/24	391 (400-½)	1280/35	391 (400-¾)
CIRCLING	1440-1	514 (600-1)	1700-2¼ 774 (800-2¼)	1700-2½ 774 (800-2½)

TDZ/CL Rwy 5L, 23R and 23L  
REIL Rwy 32  
HIRL Rwy 14-32, 5R-23L and 5L-23R

SE-2, 16 APR 2026 to 14 MAY 2026

SE-2, 16 APR 2026 to 14 MAY 2026