

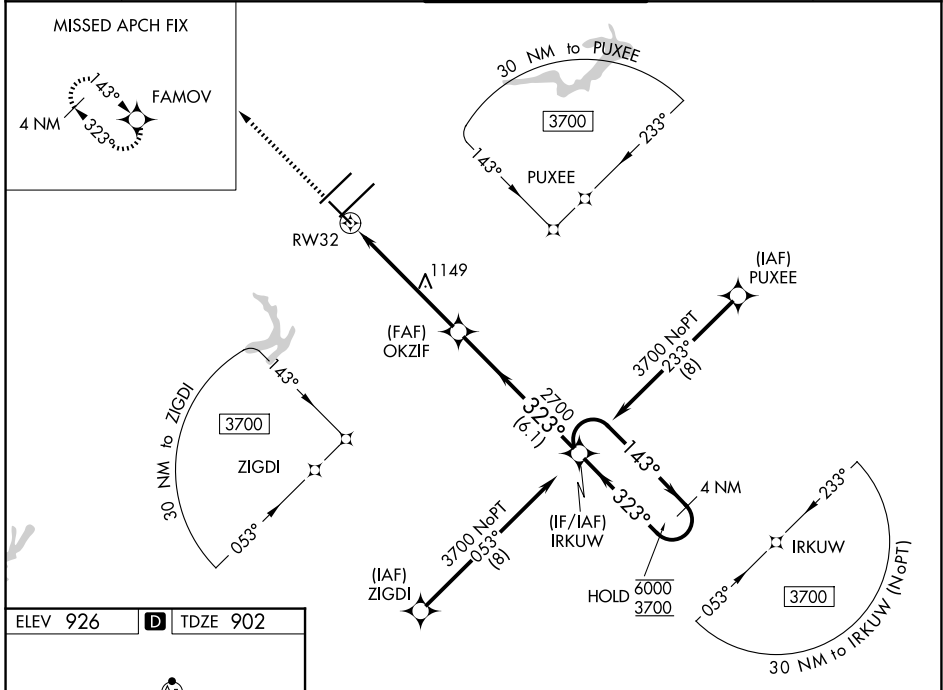
WAAS CH 61035 W32A	APP CRS 323°	Rwy Ldg 6380 TDZE 902 Apt Elev 926
--	------------------------	---

RNAV (GPS) RWY 32

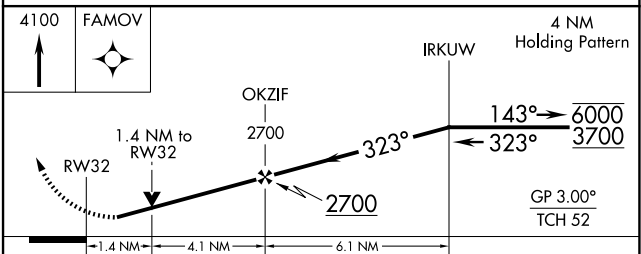
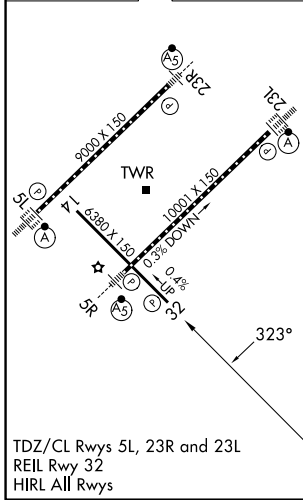
PIEDMONT TRIAD INTL (GSO)

RNP APCH - GPS.		MISSED APPROACH: Climb to 4100 direct FAMOV and hold, continue climb-in-hold to 4100.	
<p>⚠ For uncompensated Baro-VNAV systems, LNAV/VNAV NA below -7°C or above 54°C. Rwy 32 helicopter visibility reduction below 3/4 SM NA.</p>			

D-ATIS 128.55	GREENSBORO APP CON 124.35 269.225 126.6 327.075 (050°-249°)	GREENSBORO TOWER 119.1 290.325	GND CON 121.9 348.6	CLNC DEL 121.75
-------------------------	---	--	-------------------------------	---------------------------



ELEV 926	D TDZE 902
----------	-------------------



CATEGORY	A	B	C	D
LPV DA		1102-3/4	200 (200-3/4)	
LNAV/VNAV DA		1419-1 3/8	517 (500-1 3/8)	
LNAV MDA	1400-1	498 (500-1)	1400-1 3/8	498 (500-1 3/8)
CIRCLING	1440-1	514 (600-1)	1700-2 1/4 774 (800-2 1/4)	1700-2 1/2 774 (800-2 1/2)

SE-2, 16 APR 2026 to 14 MAY 2026

SE-2, 16 APR 2026 to 14 MAY 2026