

|  |                        |   |
|--|------------------------|---|
| WAAS<br>CH <b>86515</b><br><b>W05B</b> | APP CRS<br><b>054°</b> | Rwy Ldg <b>9000</b><br>TDZE <b>916</b><br>Apt Elev <b>926</b> |
|--|------------------------|---|

# RNAV (GPS) RWY 5L

PIEDMONT TRIAD INTL (GSO)

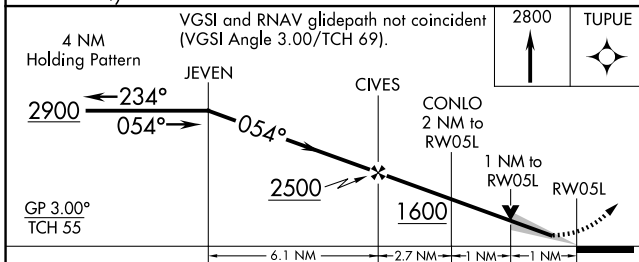
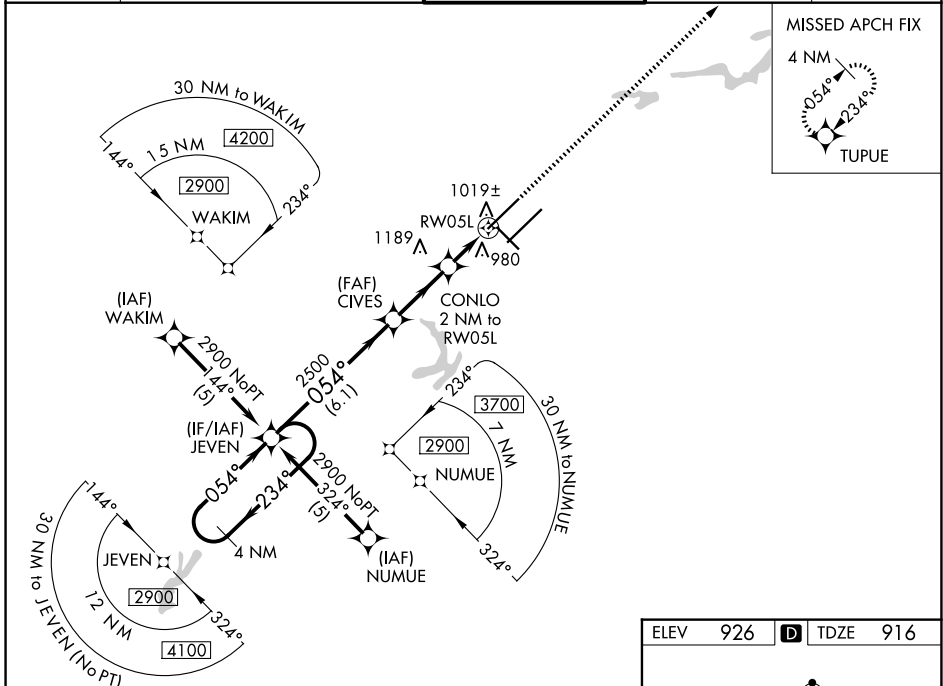
RNP APCH - GPS.

⚠ For inop ALS, increase LNAV Cat D visibility to RVR 6000. For uncompensated Baro-VNAV systems, LNAV/VNAV NA below -16°C or above 47°C. Simultaneous approach authorized with ILS or LOC Rwy 5R, ILS Rwy 5R (CAT II). Use of FD or AP required during simultaneous operations. LNAV procedure NA during simultaneous operations.

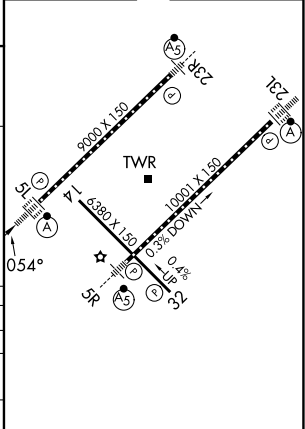
ALSF-2

MISSED APPROACH:  
Climb to 2800 direct TUPUE and hold.

|                         |   |  |                               |                           |
|-------------------------|---|--|-------------------------------|---------------------------|
| D-ATIS<br><b>128.55</b> | GREENSBORO APP CON<br><b>124.35 269.225</b> (250°-049°)<br><b>126.6 327.075</b> (050°-249°) | GREENSBORO TOWER<br><b>119.1 290.325</b> | GND CON<br><b>121.9 348.6</b> | CLNC DEL<br><b>121.75</b> |
|-------------------------|---|--|-------------------------------|---------------------------|



|          |                   |
|----------|-------------------|
| ELEV 926 | <b>D</b> TDZE 916 |
|----------|-------------------|



| CATEGORY     | A       | B           | C                       | D                       |
|--------------|---------|-------------|-------------------------|-------------------------|
| LPV DA       | 1116/18 |             | 200 (200-½)             |                         |
| LNAV/VNAV DA | 1367/50 |             | 451 (500-1)             |                         |
| LNAV MDA     | 1300/24 | 384 (400-½) | 1300/35<br>384 (400-¾)  | 1300/50<br>384 (400-1)  |
| CIRCLING     | 1440-1  | 514 (600-1) | 1700-2¼<br>774 (800-2¼) | 1700-2½<br>774 (800-2½) |

TDZ/CL Rwy 5L, 23R and 23L  
REIL Rwy 32  
HIRL Rwy 14-32, 5R-23L and 5L-23R

SE-2, 16 APR 2026 to 14 MAY 2026

SE-2, 16 APR 2026 to 14 MAY 2026