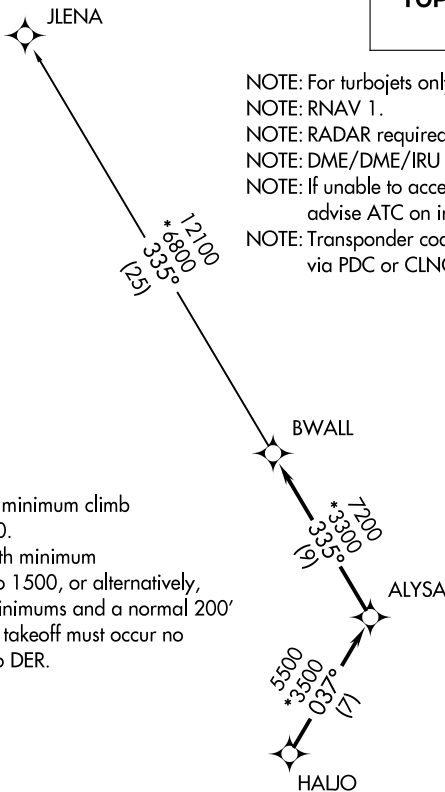


BWALL TWO DEPARTURE (RNAV)

ATIS
127.075
GND CON
121.25
GREENVILLE TOWER ★
119.9 257.7
UNICOM
122.95
GREER DEP CON ★
118.8 270.275

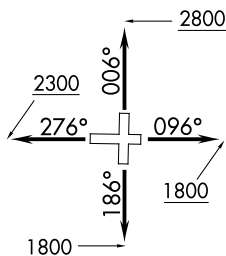
**TOP ALTITUDE:
3000**

NOTE: For turbojets only.
NOTE: RNAV 1.
NOTE: RADAR required.
NOTE: DME/DME/IRU or GPS required.
NOTE: If unable to accept climb rates, advise ATC on initial contact.
NOTE: Transponder code will be issued via PDC or CLNC DEL.



TAKEOFF MINIMUMS

- Rwy 1, 19: Standard.
- Rwy 10: 300-1 or standard with minimum climb of 355' per NM to 1300.
- Rwy 28: 300-2½ or standard with minimum climb of 220' per NM to 1500, or alternatively, with standard takeoff minimums and a normal 200' per NM climb gradient, takeoff must occur no later than 1900' prior to DER.



NOTE: Chart not to scale.

DEPARTURE ROUTE DESCRIPTION

TAKEOFF ALL RWYS: Climb on assigned heading for RADAR vectors to HALJO, then on depicted route to BWALL, thence. . . .

. . . .on JLENA transition. Maintain 3000. Expect clearance to filed altitude within 10 minutes after departure.

TAKEOFF RWY 1: Climb heading 006° to 2800 before turning west or northwest.

TAKEOFF RWY 10: Climb heading 096° to 1800 before turning west or northwest.

TAKEOFF RWY 19: Climb heading 186° to 1800 before turning north or northwest.

TAKEOFF RWY 28: Climb heading 276° to 2300 before turning north or northwest.

JLENA TRANSITION (BWALL2.JLENA)

SE-2, 16 APR 2026 to 14 MAY 2026

SE-2, 16 APR 2026 to 14 MAY 2026

BWALL TWO DEPARTURE (RNAV)