

LOC I-GMU 109.7	APP CRS 006°	Rwy Ldg 5393 TDZE 1015 Apt Elev 1048
---------------------------	------------------------	---

ILS or LOC RWY 1

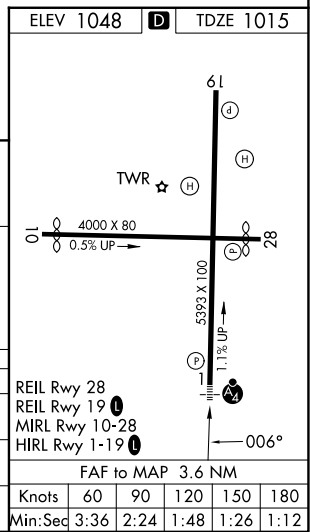
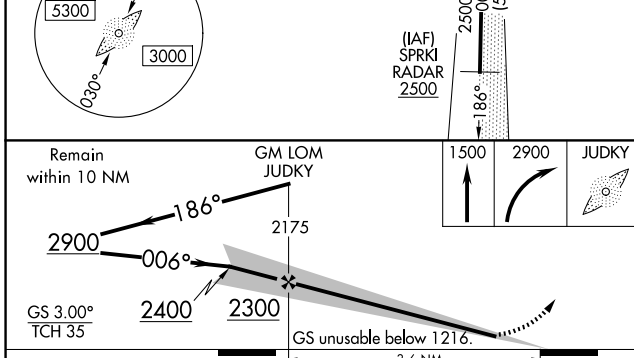
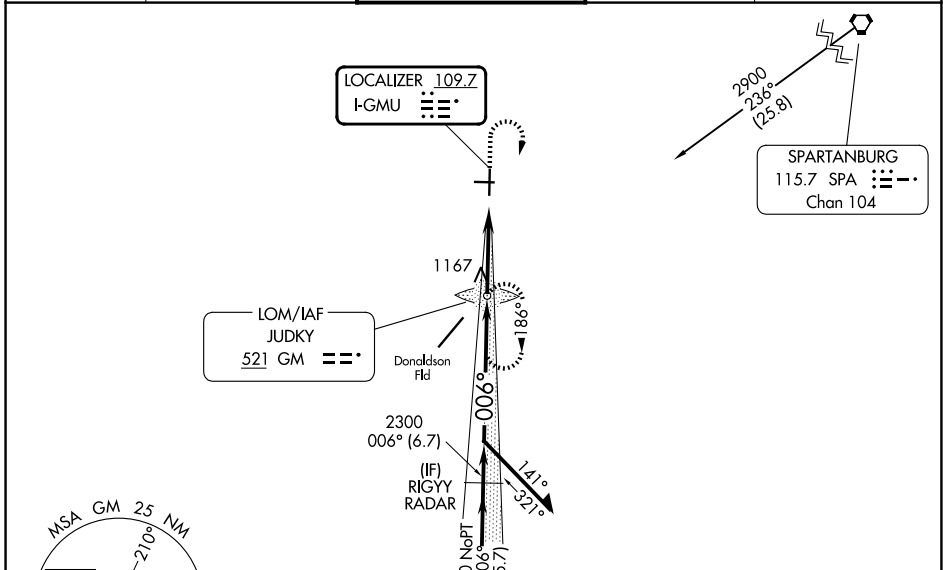
GREENVILLE DOWNTOWN (GMU)

ADF required. RADAR required for procedure entry at SPRKI.

⚠ Inop table does not apply to S-ILS 1 all Cats. For inop ALS, increase S-LOC 1 visibility Cats C/D to 1 1/2 SM. When local altimeter setting not received, use Greer altimeter setting and increase DA to 1248, increase all MDAs 40 feet and Circling Cat C visibility 1/4 SM. For inop ALS when using Greer altimeter setting, increase S-LOC 1 visibility Cat C/D to 1 1/2 SM. When using Greer altimeter setting, inop table does not apply to S-ILS 1 all Cats.

MALSF
 MISSED APPROACH: Climb to 1500 then climbing right turn to 2900 direct JUDKY LOM and hold, continue climb-in-hold to 2900.

ATIS 127.075	GREER APP CON* 118.8 270.275	GREENVILLE TOWER* 119.9 (CTAF) 0 257.7	GND CON 121.25	UNICOM 122.95
------------------------	--	--	--------------------------	-------------------------



SE-2, 16 APR 2026 to 14 MAY 2026

SE-2, 16 APR 2026 to 14 MAY 2026