

WAAS CH <b>87037</b> <b>W28A</b>	APP CRS <b>276°</b>	Rwy Ldg TDZE Apt Elev	<b>3463</b> <b>1013</b> <b>1048</b>
----------------------------------------	------------------------	-----------------------------	-------------------------------------------

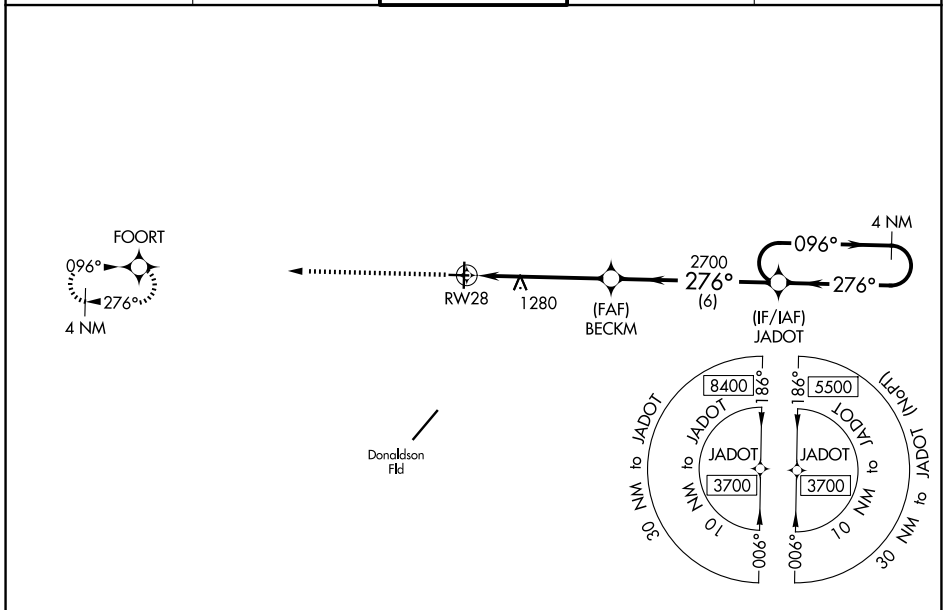
# RNAV (GPS) RWY 28

GREENVILLE DOWNTOWN (GMU)

▼ Baro-VNAV NA when using Greer altimeter setting. For uncompensated Baro-VNAV systems, LNAV/VNAV NA below -6°C (22°F) or above 54°C (130°F). DME/DME RNP-0.3 NA.  
 ▲ When local altimeter setting not received, use Greer altimeter setting and increase all DA 29 feet and all MDA 40 feet; increase LNAV/VNAV all Cats and LNAV Cats C/D visibility ½ mile. Helicopter visibility reduction below 1 SM NA. Night landing: Rwy 19 NA.

MISSED APPROACH: Climb to 3700 direct FOORT and hold.

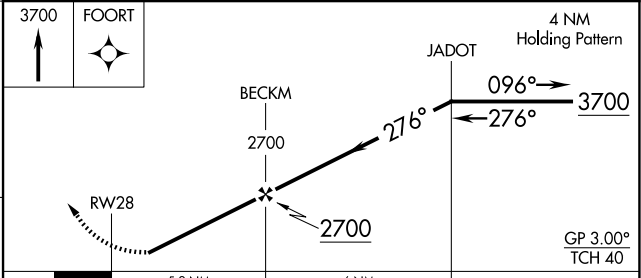
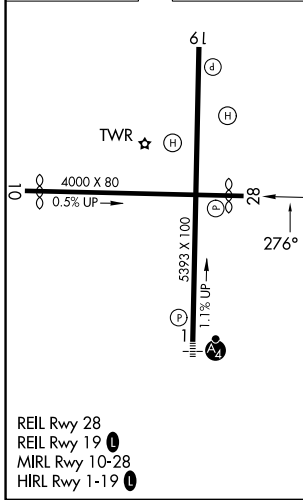
ATIS <b>127.075</b>	GREER APP CON ★ <b>118.8 270.275</b>	GREENVILLE TOWER ★ <b>119.9 (CTAF) 0 257.7</b>	GND CON <b>121.25</b>	UNICOM <b>122.95</b>
------------------------	-----------------------------------------	---------------------------------------------------	--------------------------	-------------------------



SE-2, 16 APR 2026 to 14 MAY 2026

SE-2, 16 APR 2026 to 14 MAY 2026

ELEV 1048	<b>D</b>	TDZE 1013
-----------	----------	-----------



CATEGORY	A	B	C	D
LPV DA	1263-1 250 (300-1)			
LNAV/VNAV DA	1463-1½ 450 (500-1½)			
LNAV MDA	1540-1	527 (500-1)	1540-1½	527 (500-1½)
CIRCLING	1620-1	572 (600-1)	1780-2 732 (800-2)	1860-2¾ 812 (900-2¾)