

VORTAC SQS <b>114.7</b> Chan <b>94</b>	APP CRS <b>076°</b>	Rwy Ldg TDZE <b>149</b> Apt Elev <b>162</b>
--	------------------------	---

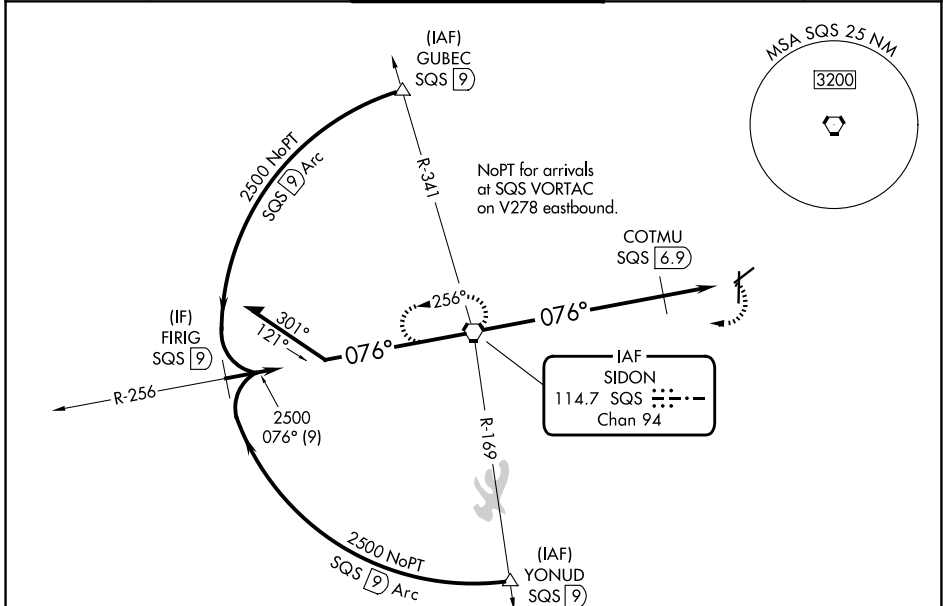
# VOR RWY 5

GREENWOOD-LEFLORE (GWO)

When local altimeter setting not received, use Greenville altimeter setting and increase all MDAs 120 feet and visibility S-5 Cat B and Circling Cat A/B ¼ SM, and S-5 Cat C/D and Circling Cat C ½ SM and COTMU Fix Minimums S-5 Cat C/D ¼ SM and Circling Cat C ½ SM.  
Rwy 5 helicopter visibility reduction below 1 SM NA. Straight-in Rwy 5 NA at night, Circling Rwy 5, 23 NA at night.

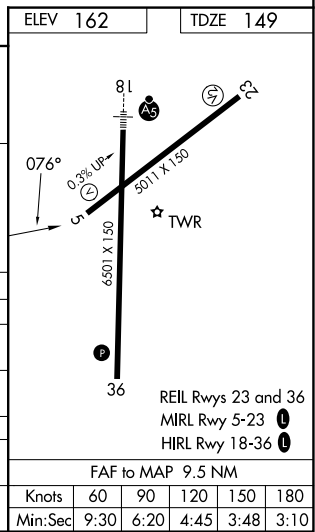
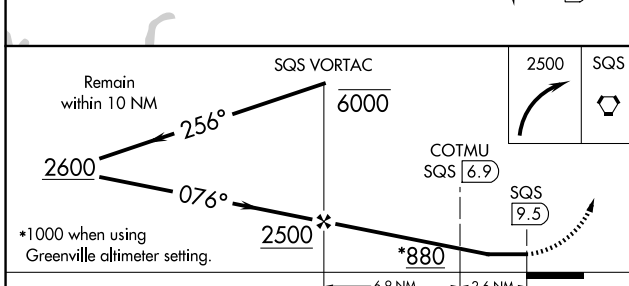
**MISSED APPROACH:**  
Climbing right turn to 2500 direct SQS VORTAC and hold.

ASOS <b>119.975</b>	MEMPHIS CENTER <b>132.5 259.1</b>	GREENWOOD TOWER ★ <b>118.35 (CTAF) 0 367.6</b>	GND CON <b>125.55 373.4</b>	UNICOM <b>122.95</b>
------------------------	--------------------------------------	---	--------------------------------	-------------------------



SC-4, 16 APR 2026 to 14 MAY 2026

SC-4, 16 APR 2026 to 14 MAY 2026



CATEGORY	A	B	C	D
S-5	880-1	731 (800-1)	880-2	731 (800-2)
CIRCLING	880-1	718 (800-1)	1000-2½ 838 (900-2½)	1120-3 958 (1000-3)
COTMU FIX MINIMUMS (DME REQUIRED)				
S-5	600-1	451 (500-1)	600-1¾	451 (500-1¾)
CIRCLING	760-1	598 (600-1)	1000-2½ 838 (900-2½)	1120-3 958 (1000-3)

FAF to MAP 9.5 NM					
Knots	60	90	120	150	180
Min:Sec	9:30	6:20	4:45	3:48	3:10