

WAAS CH 82539 W27A	APP CRS 272°	Rwy Idg TDZE Apt Elev	5001 629 631
--	------------------------	-----------------------------	---

AL-183 (FAA)

RNAV (GPS) RWY 27
GREENWOOD COUNTY (G.R.D)

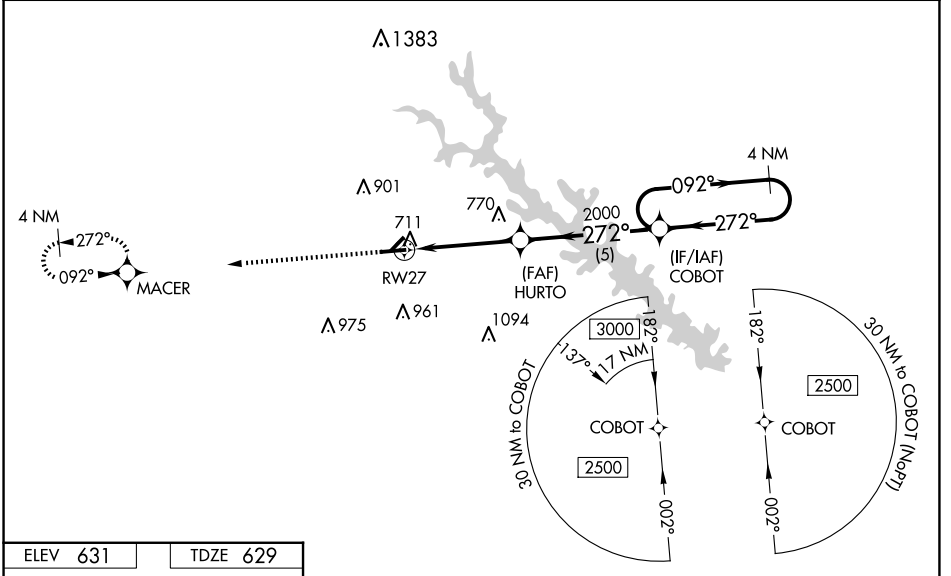
For uncompensated Baro-VNAV systems, LNAV/VNAV NA below -10°C (14°F) or above 54°C (130°F). Baro-VNAV and VDP NA when using Laurens altimeter setting. DME/DME RNP-0.3 NA. Circling Rwy 5, 23 NA at night. Rwy 27 helicopter visibility reduction below 3/4 SM NA. When local altimeter setting not received, use Laurens altimeter setting: increase LPV DA to 932 feet and all visibilities 1/8 SM; increase LNAV/VNAV DA to 936 feet and all visibilities 1/8 SM; increase all MDA 60 feet and LNAV visibility Cats C and D 1/8 SM and Circling visibility Cats C and D 1/4 SM. For inop ALS, increase LNAV/VNAV all Cats visibility to 1/8 SM and LNAV all Cats visibility to 1 SM. For inop ALS when using Laurens altimeter setting, increase LPV and LNAV/VNAV all Cats and LNAV Cats A and B visibility to 1 SM and LNAV Cats C and D visibility to 1 1/8 SM.

ODALS 	MISSED APPROACH: Climb to 2500 direct MACER and hold.
-----------	--

ASOS 121.125

GREER APP CON ★ 120.6 350.2

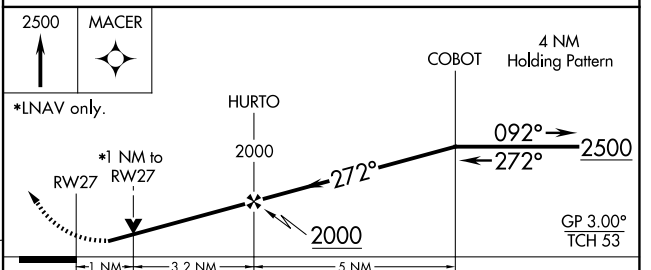
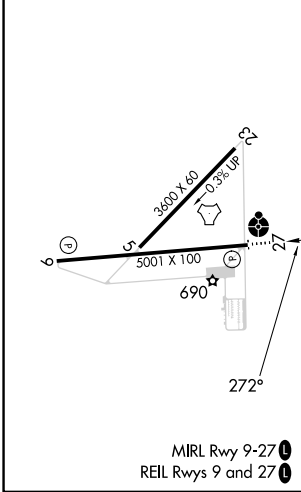
UNICOM 122.975 (CTAF) 0



SE-2, 16 APR 2026 to 14 MAY 2026

SE-2, 16 APR 2026 to 14 MAY 2026

ELEV 631	TDZE 629
-----------------	-----------------



CATEGORY	A	B	C	D
LPV DA		879-3/4	250 (300-3/4)	
LNAV/VNAV DA		883-3/4	254 (300-3/4)	
LNAV MDA	980-3/4	351 (400-3/4)	980-7/8	351 (400-7/8)
C CIRCLING	1080-1 449 (500-1)	1100-1 469 (500-1)	1320-2 689 (700-2)	1340-2 1/4 709 (800-2 1/4)