

WAAS CH 78239 W09A	APP CRS 092°	Rwy Idg TDZE Apt Elev	5001 631 631
--	------------------------	-----------------------------	---

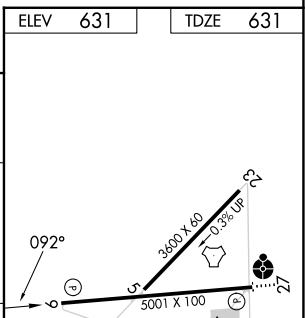
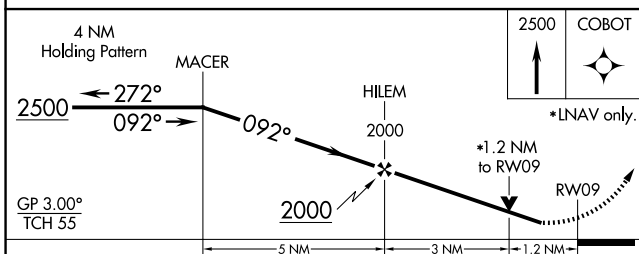
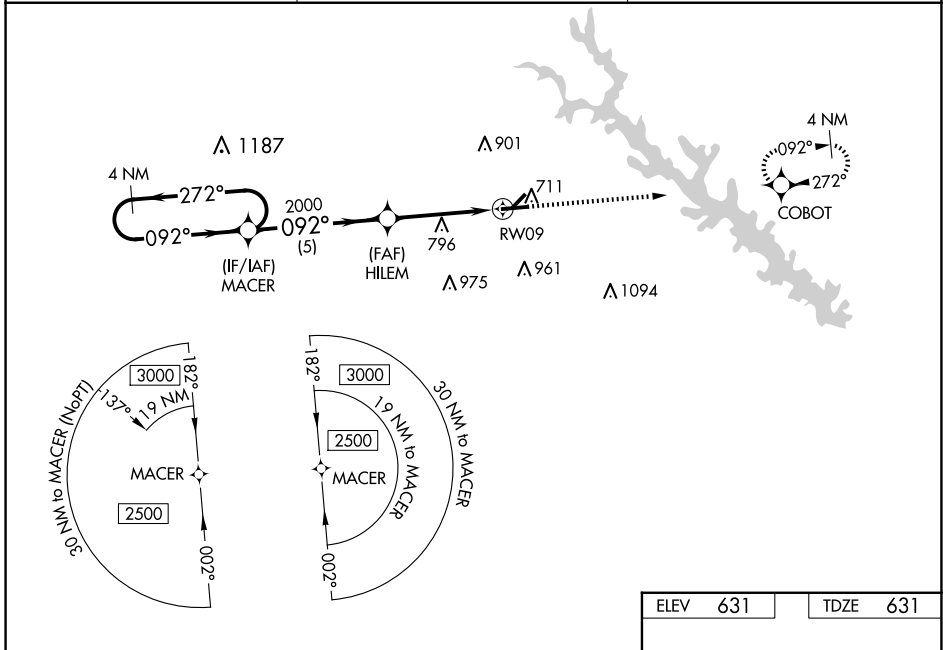
RNAV (GPS) RWY 9

GREENWOOD COUNTY (G.R.D)

For uncompensated Baro-VNAV systems, LNAV/VNAV NA below -10°C (14°F) or above 54°C (130°F). Baro-VNAV and VDP NA when using Laurens altimeter setting. DME/DME RNP-0.3 NA. Circling Rwy 5, 23 NA at night. When local altimeter setting not received, use Laurens altimeter setting and increase LPV DA to 991 feet and visibility 1/8 SM all Cats, LNAV/VNAV DA to 1070 feet and visibility 1/4 SM all Cats, increase all MDA 60 feet, and LNAV Cat C/D visibility 1/8 SM and Circling Cat C/D visibility 1/4 SM. Rwy 9 helicopter visibility reduction below 3/4 SM NA.

MISSED APPROACH:
Climb to 2500 direct COBOT and hold.

ASOS 121.125	GREER APP CON ★ 120.6 350.2	UNICOM 122.975 (CTAF) 0
------------------------	---------------------------------------	-----------------------------------



CATEGORY	A	B	C	D
LPV DA	938-1 307 (400-1)			
LNAV/VNAV DA	1017-1 1/4 386 (400-1 1/4)			
LNAV MDA	1060-1	429 (500-1)	1060-1 1/4	429 (500-1 1/4)
CIRCLING	1080-1 449 (500-1)	1100-1 469 (500-1)	1320-2 689 (700-2)	1340-2 1/4 709 (800-2 1/4)

ELEV 631	TDZE 631
----------	----------

*LNAV only.

MIRL Rwy 9-27 0
REIL Rwys 9 and 27 0

SE-2, 16 APR 2026 to 14 MAY 2026

SE-2, 16 APR 2026 to 14 MAY 2026