

HI-TACAN RWY 25

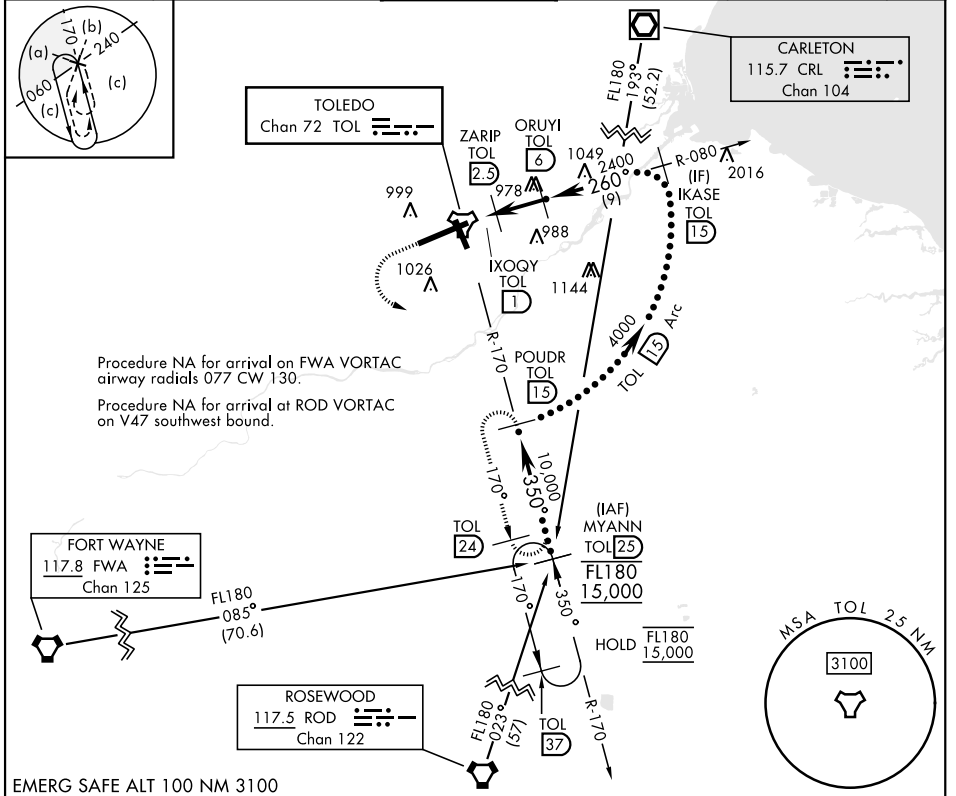
TACAN TOL Chan 72	APCH CRS 260°	Rwy Idg 10,599 TDZE 678 Arprt Elev 684
-----------------------------	-------------------------	---

[USAF]

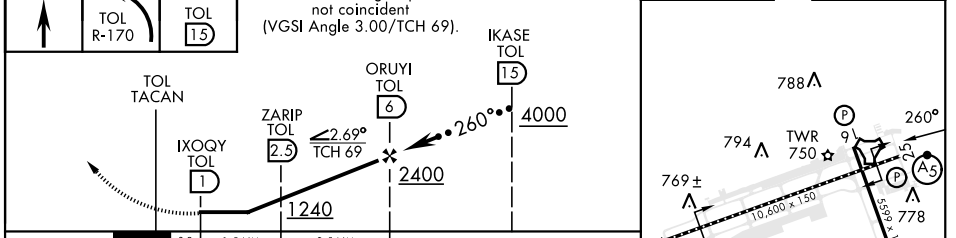
EUGENE F KRANZ TOLEDO EXPRESS (KTOL)

<p>▲ * When ALS inop, increase RVR to 60, vis to 1½ mile.</p> <p>▲ MALSR A5</p>	<p>MISSED APPROACH: Climb to 3000 then left turn on TOL R-170 to POUDR/15 DME and hold.</p>
--	---

ATIS 118.75 290.225	TOLEDO APP CON 126.1 317.55	TOLEDO TOWER 118.1 285.4	GND CON 121.9 348.6	CLNC DEL 121.75 348.6	ASR
-------------------------------	---------------------------------------	------------------------------------	-------------------------------	---------------------------------	-----



<p>3000 ↑ TOL R-170</p>	<p>POUDR TOL 15</p>	<p>VGSI and ILS glidepath not coincident (VGSI Angle 3.00/TCH 69).</p>	<p>ELEV 684 D TDZE 678</p>
---------------------------------	---------------------	--	-----------------------------------



CATEGORY	C	D	E
S-25 *	1080/40 402 (500-¾)	1080/40	402 (500-¾)
CIRCLING	1360-2 676 (700-2)	1400-2¼ 716 (800-2¼)	1400-2½ 716 (800-2½)

HIRL Rwy 7-25
MIRL Rwy 16-34
REIL Rwy 16, 34
TDZL/CL Rwy 7

HI-TACAN RWY 25

EC-2, 16 APR 2026 to 14 MAY 2026

EC-2, 16 APR 2026 to 14 MAY 2026