

TOLEDO, OHIO

HI-TACAN RWY 7

TACAN TOL Chan 72	APCH CRS 068°	Rwy Idg TDZE Arpt Elev 10,599 683 684
-----------------------------	-------------------------	---

[USAF]

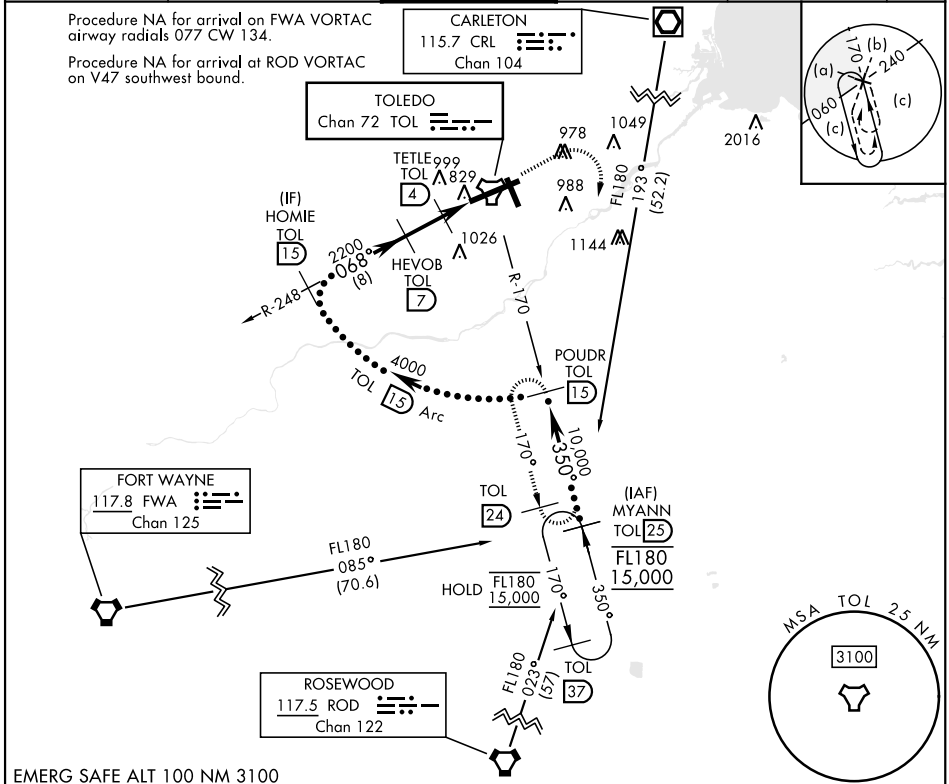
EUGENE F KRANZ TOLEDO EXPRESS (KTOL)

V * When ALS inop, increase CAT E vis to 1 $\frac{1}{2}$ mile.

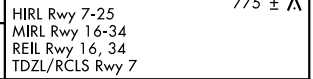
ALS F-2

MISSED APPROACH: Climb to 3000 then right turn on TOL TACAN R-170 to POUDR/15 DME and hold.

ATIS 118.75 290.225	TOLEDO APP CON 126.1 317.55	TOLEDO TOWER 118.1 285.4	GND CON 121.9 348.6	CLNC DEL 121.75 348.6	ASR
-------------------------------	---------------------------------------	------------------------------------	-------------------------------	---------------------------------	-----



	3000 	 TOL R-170	POUDR TOL 15	ELEV	684	D	TDZE	683
				CATEGORY	C	D	E	
S-7 *	1140/45	457	(500-7%)					
CIRCLING	1360-2 676 (700-2)	1400-2 1/4 716 (800-2 1/4)	1400-2 1/2 716 (800-2 1/2)					



TOLEDO, OHIO

41° 35' N-83° 48' W

EUGENE F KRANZ TOLEDO EXPRESS (KTOL)

Amdt 6D 26DEC24

HI-TACAN RWY 7

EC-2, 16 APR 2026 to 14 MAY 2026

EC-2, 16 APR 2026 to 14 MAY 2026