

# HI-ILS or LOC Z RWY 8

LOC I-LFI <b>109.9</b>	APCH CRS <b>078°</b>	Rwy ldg <b>10,002</b> TDZE <b>8</b> Arpt Elev <b>8</b>
---------------------------	-------------------------	--

[USAF]

LANGLEY AFB (KLF1)

RADAR or DME required.

- ▼ \* When ALS inop, increase RVR to 40 and vis to ½ mile.
- \*\* When ALS inop, increase vis to 1 ½ miles.
- \*\*\* Circling S of Rwy 8-26 not authorized.

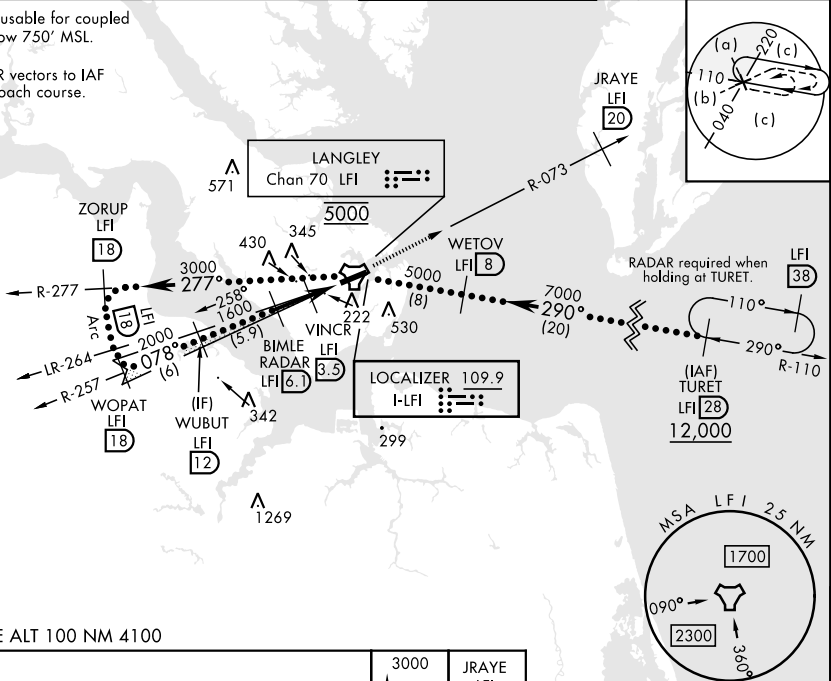


MISSED APPROACH: Climb to 3000 on LFI TACAN R-073 to JRAYE/20 DME, then as instructed by ATC.

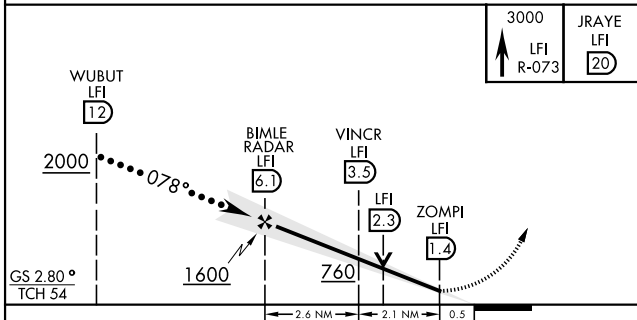
ATIS★ <b>270.1</b>	NORFOLK APP CON <b>124.9</b> (311° - 009°) <b>126.05</b> (010° - 080°) <b>127.9</b> 269.425 (180° - 310°)	TOWER★ <b>125.0 253.5</b>	GND CON <b>121.7 275.8</b>
-----------------------	--	------------------------------	-------------------------------

Glideslope unusable for coupled approach below 750' MSL.

Expect RADAR vectors to IAF or Final Approach course.

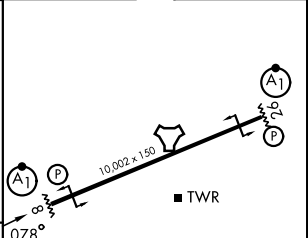


EMERG SAFE ALT 100 NM 4100



ELEV	8	TDZE	8
------	---	------	---

CATEGORY	C	D	E
S-ILS 8*	208/24	200	(200-½)
S-LOC 8**	480/50	472	(500-1)
CIRCLING***	700-2 692 (700-2)	740-2¼ 732 (800-2¼)	740-2½ 732 (800-2½)



HIRL Rwy 8-26					
FAF to MAP 4.7 NM					
Knots	120	140	160	180	200
Min:Sec	2:21	2:01	1:46	1:34	1:25

# HI-ILS or LOC Z RWY 8

NE-3, 16 APR 2026 to 14 MAY 2026

NE-3, 16 APR 2026 to 14 MAY 2026