

HI-TACAN Z RWY 8

TACAN LFI Chan 70	APCH CRS 073°	Rwy ldg 10,002 TDZE 8 Arprt Elev 8
--------------------------	----------------------	---

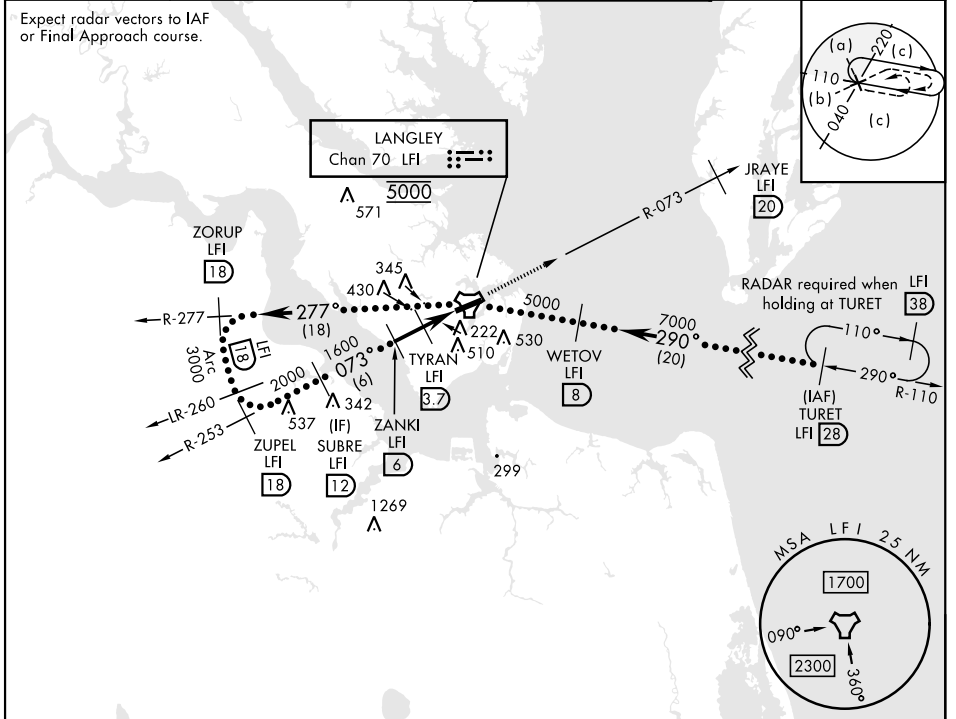
[USAF]

LANGLEY AFB (KLFJ)

A1 MISSED APPROACH: Climb to 3000 via LFI TACAN R-073 to JRAYE/20 DME, then as instructed by ATC.

ATIS★ 270.1	NORFOLK APP CON 124.9 (311° - 009°) 126.05 (010° - 080°) 127.9 269.425 (180° - 310°)	TOWER★ 125.0 253.5	GND CON 121.7 275.8
-----------------------	---	------------------------------	-------------------------------

Expect radar vectors to IAF or Final Approach course.



NE-3, 16 APR 2026 to 14 MAY 2026

NE-3, 16 APR 2026 to 14 MAY 2026

EMERG SAFE ALT 100 NM 4100

ELEV 8		TDZE 8	
SUBRE LFI 12 2000 073°		JRAYE LFI 20 3000 R-073	
ZANKI LFI 6 1600 073°		TYRAN LFI 3.7 900 2.87° TCH 54	
LFI TACAN 900 073°		FUNDY LFI 1.4 700 073°	
CATEGORY C		CATEGORY D	
S-8 * 480/50		472 (500-1)	
CIRCLING ** 700-2 692 (700-2)		740-2¼ 732 (800-2¼)	
		740-2½ 732 (800-2½)	
HIRL Rwy 8-26			

HI-TACAN Z RWY 8