

HAMPTON, VIRGINIA

RNAV (GPS) RWY 26

WAAS CH 41171 W26A	APCH CRS 258°	Rwy ldg 10,002	TDZE 8
		Arprt Elev 8	

(USAF)

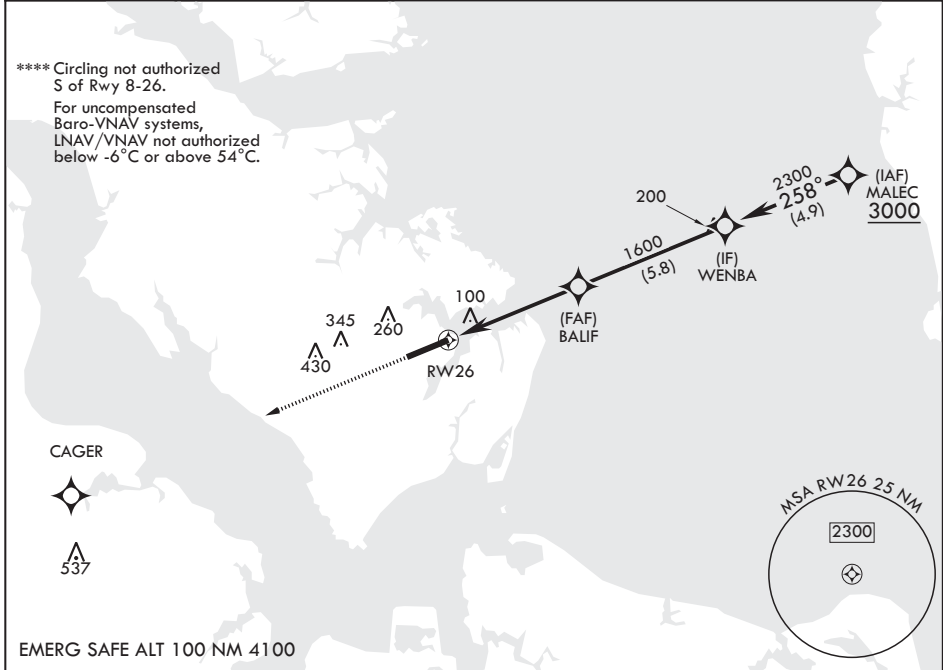
LANGLEY AFB (KLFJ)

RNP APCH-GPS

- ▼ * When ALS inop increase RVR to 40, vis to 3/4 mile.
- ** When ALS inop, increase RVR to 55, vis to 1 mile.
- *** When ALS inop, increase CAT AB RVR to 55 and vis to 1 mile, CAT CDE vis to 1 3/8 miles.

ALSIF-1 MISSED APPROACH: Climb to 500 then climbing left to 3000 direct CAGER, then as instructed by ATC.

ATIS★ 270.1	NORFOLK APP CON/DEP CON 124.9 (311°-009°) 126.05 (010°-080°) 127.9 269.425 (180°-310°)	TOWER★ 125.0 253.5	GND CON 121.7 275.8
----------------	---	-----------------------	------------------------



NE-3, 16 APR 2026 to 14 MAY 2026

NE-3, 16 APR 2026 to 14 MAY 2026

500	3000	CAGER	ELEV 8					TDZE 8
CATEGORY	A	B	C	D	E			
LPV DA*	208/24		200	(200-1/2)				
LNAV/VNAV DA**	369/35	361	(400-5/8)	373/35	365	(400-5/8)		
LNAV MDA***	480/24	472	(500-1/2)	480/50	472	(500-1)		
CIRCLING****	520-1 512 (600-1)	560-1 552 (600-1)	700-2 692 (700-2)	740-2 1/4 732 (800-2 1/4)	740-2 1/2 732 (800-2 1/2)	HIRL all rwys		

HAMPTON, VIRGINIA
Amdt 8 17APR25

37°05'N - 76°22'W

LANGLEY AFB (KLFJ)

RNAV (GPS) RWY 26