

# TACAN Y RWY 26

TACAN LFI Chan <b>70</b>	APCH CRS <b>263°</b>	Rwy ldg <b>10,002</b> TDZE 8 Arprt Elev 8
-----------------------------	-------------------------	---

[USAF]

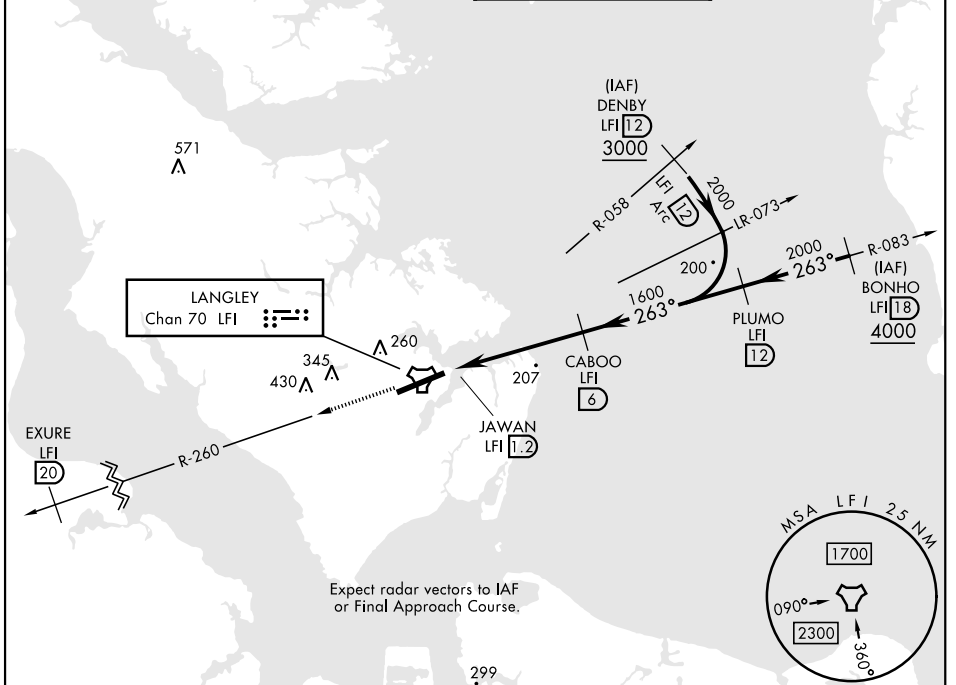
LANGLEY AFB (KLF1)

▼ \*When ALS inop, increase CAT AB RVR to 55 and vis to 1 mile, CAT CDE vis to 1 3/8 miles.  
 \*\* Circling not authorized S of Rwy 8-26.

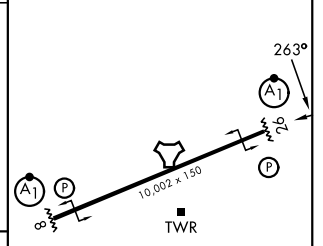
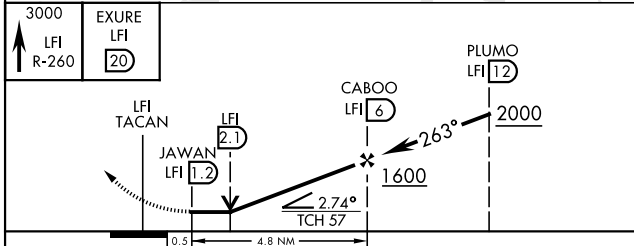


MISSED APPROACH: Climb to 3000 on LFI TACAN R-260 to EXURE LFI 20 DME, then as instructed by ATC.

ATIS★ <b>270.1</b>	NORFOLK APP CON <b>124.9</b> (311° - 009°) <b>126.05</b> (010° - 080°) <b>127.9 269.425</b> (180° - 310°)	TOWER★ <b>125.0 253.5</b>	GND CON <b>121.7 275.8</b>
-----------------------	--	------------------------------	-------------------------------



ELEV	8	TDZE	8
------	---	------	---



CATEGORY	A	B	C	D	E
S-26*	480/24	472 (500-1/2)	480/50	472 (500-1)	
CIRCLING **	520-1 512 (600-1)	560-1 552 (600-1)	700-2 692 (700-2)	740-2 1/4 732 (800-2 1/4)	740-2 1/2 732 (800-2 1/2)

HIRL Rwy 8-26

# TACAN Y RWY 26

NE-3, 16 APR 2026 to 14 MAY 2026

NE-3, 16 APR 2026 to 14 MAY 2026