

HAMPTON, VIRGINIA

TACAN Y RWY 8

TACAN LFI Chan 70	APCH CRS 073°	Rwy ldg 10,002 TDZE 8 Arprt Elev 8
--------------------------	----------------------	---

[USAF]

LANGLEY AFB (KLF1)

▼ *When ALS inop, increase CAT AB RVR to 55 and vis to 1 mile, CAT CDE vis to 1 3/8 miles.
Circling not authorized S of Rwy 8-26.



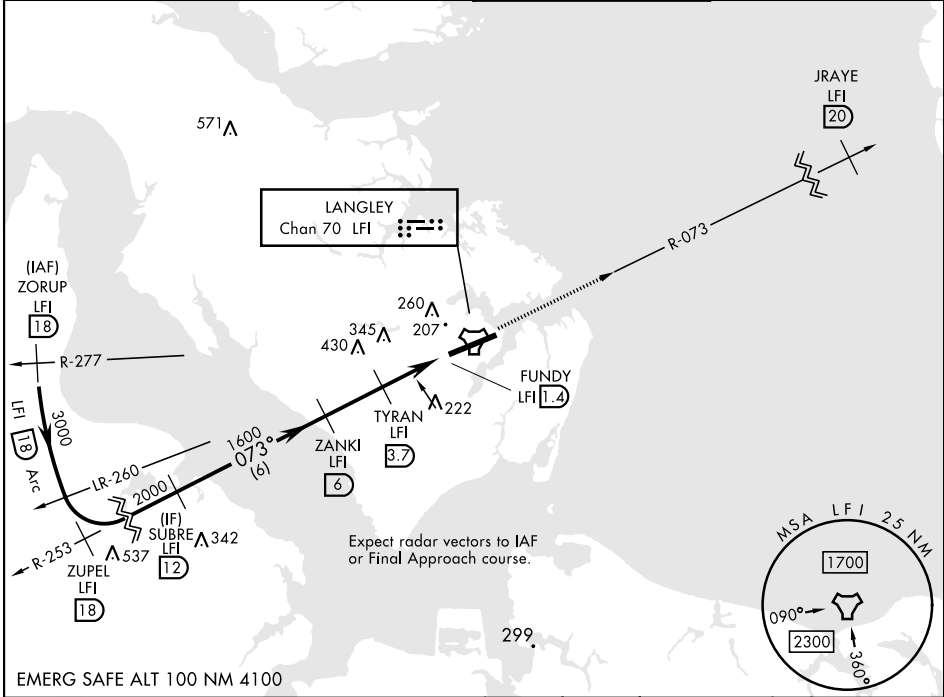
MISSED APPROACH: Climb to 3000 on LFI TACAN R-073 to JRAYE LFI 20 DME, then as instructed by ATC.

ATIS★
270.1

NORFOLK APP CON
124.9 (311° - 009°)
126.05 (010° - 080°)
127.9 269.425 (180° - 310°)

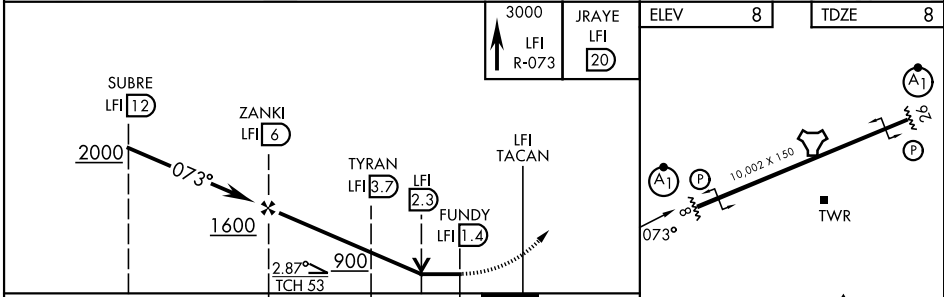
TOWER★
125.0 253.5

GND CON
121.7 275.8

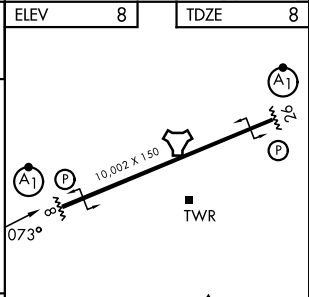


NE-3, 16 APR 2026 to 14 MAY 2026

NE-3, 16 APR 2026 to 14 MAY 2026



CATEGORY	A	B	C	D	E
S-8*	480/24	472 (500-1/2)	480/50	472	(500-1)
CIRCLING**	520-1 512 (600-1)	560-1 552 (600-1)	700-2 692 (700-2)	740-2 1/4 732 (800-2 1/4)	740-2 1/2 732 (800-2 1/2)



HAMPTON, VIRGINIA
Amdt 7 17APR25

37°05'N-76°22'W

LANGLEY AFB (KLF1)

TACAN Y RWY 8