

LOC I-MDT <b>110.9</b>	APP CRS <b>128°</b>	Rwy Ldg <b>8070</b>
		TDZE <b>308</b>
		Apt Elev <b>310</b>

# ILS or LOC RWY 13

HARRISBURG INTL (MDT)

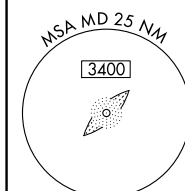
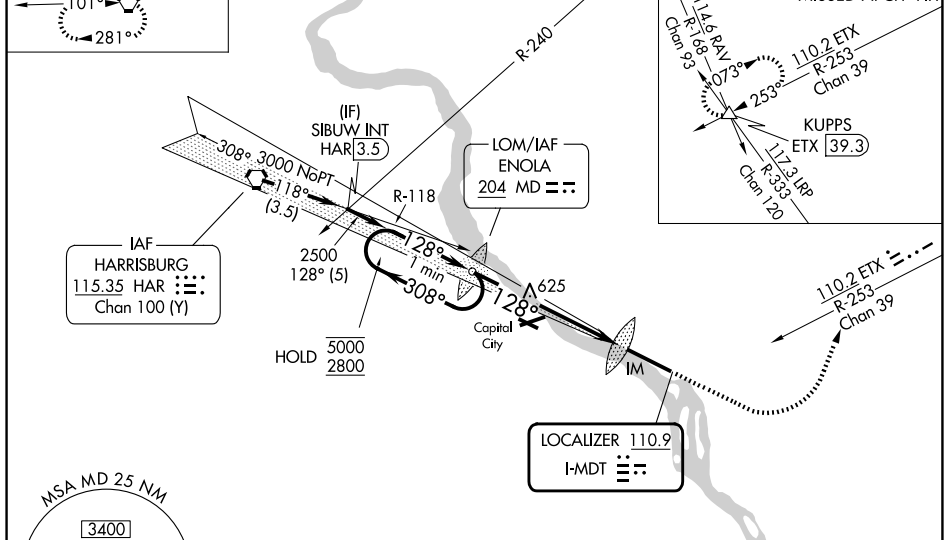
<p>Circling NA south of Rwy 13-31. -16°C</p>	<p>ALSF-2</p>	<p>MISSED APPROACH: Climb to 900 then climbing left turn to 3000 on heading 070° and on ETX VOR/DME R-253 to KUPPS INT/ETX 39.3 DME and hold.</p>
--	---------------	---

<p>ATIS <b>118.8</b></p>	<p>HARRISBURG APP CON</p> <table border="1"> <tr> <td>(080°-179°)</td> <td><b>126.45</b></td> <td><b>281.525</b></td> </tr> <tr> <td>(180°-329°)</td> <td><b>124.1</b></td> <td><b>273.525</b></td> </tr> <tr> <td>(330°-079°)</td> <td><b>118.25</b></td> <td><b>269.45</b></td> </tr> </table>	(080°-179°)	<b>126.45</b>	<b>281.525</b>	(180°-329°)	<b>124.1</b>	<b>273.525</b>	(330°-079°)	<b>118.25</b>	<b>269.45</b>	<p>HARRISBURG INTL TOWER <b>124.8 269.35</b></p>	<p>GND CON <b>121.7 348.6</b></p>
(080°-179°)	<b>126.45</b>	<b>281.525</b>										
(180°-329°)	<b>124.1</b>	<b>273.525</b>										
(330°-079°)	<b>118.25</b>	<b>269.45</b>										

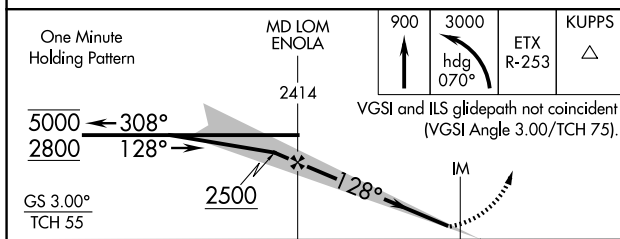
ALTERNATE MISSED APCH FIX

HARRISBURG HAR 115.35  
Chan 100 (Y)

Procedure NA for arrival on HAR VORTAC airway radials 102 CW 157 and at HAR VORTAC on V12 eastbound.



ELEV 310	<b>D</b>	TDZE 308
----------	----------	----------



TDZ/CL Rwy 13	REIL Rwy 31	HIRL Rwy 13-31			
FAF to MAP 6.4 NM					
Knots	60	90	120	150	180
Min:Sec	6:24	4:16	3:12	2:34	2:08

CATEGORY	A	B	C	D
S-ILS 13		508/18	200 (200-1/2)	
S-LOC 13	900/24	592 (600-1/2)	900-1 1/4	592 (600-1 1/4)
CIRCLING	900-1 590 (600-1)	980-1 670 (700-1)	1000-2 690 (700-2)	1420-3 1110 (1200-3)

NE-4, 16 APR 2026 to 14 MAY 2026

NE-4, 16 APR 2026 to 14 MAY 2026