

WAAS CH 86313 W13A	APP CRS 128°	Rwy Ldg 8070 TDZE 308 Apt Elev 310
--	------------------------	--

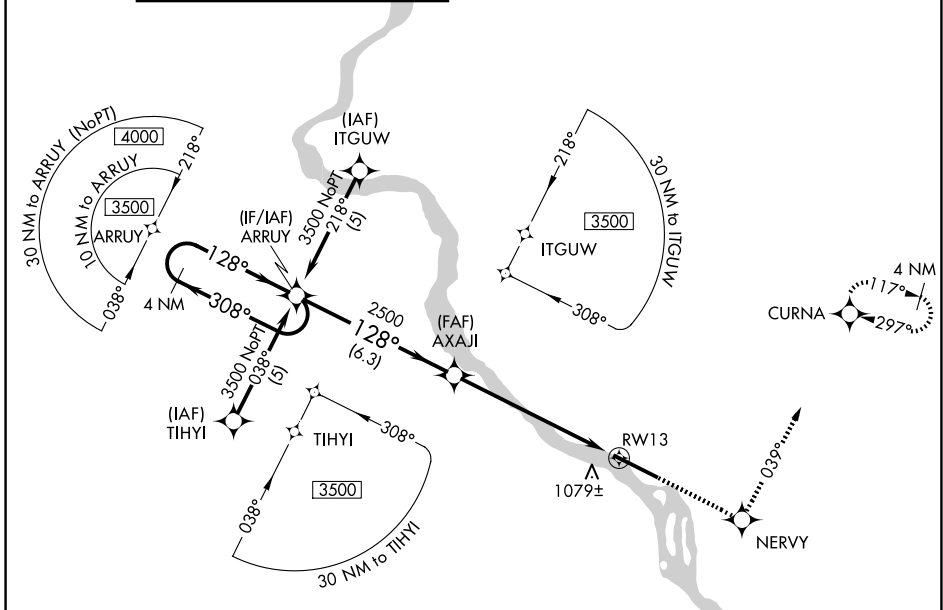
RNAV (GPS) RWY 13

HARRISBURG INTL (MDT)

⚠ Circling NA south of Rwy 13-31. For uncompensated Baro-VNAV systems, LNAV/VNAV NA below -15°C (5°F) or above 48°C (118°F). DME/DME RNP-0.3 NA. Inop table does not apply to LNAV/VNAV all Cats.

ALSIF-2
⚠ MISSED APPROACH: Climb to 3500 direct NERVY and via track 039° to CURNA and hold, continue climb-in-hold to 3500.

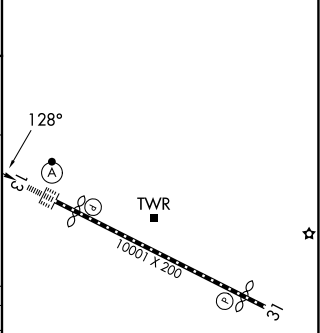
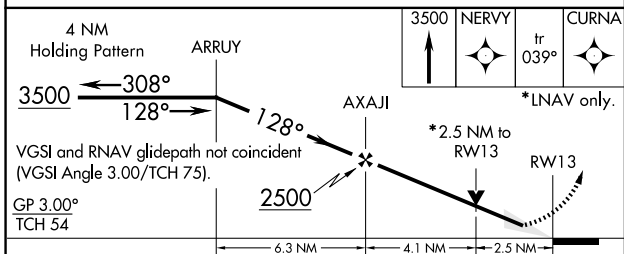
ATIS 118.8	HARRISBURG APP CON (080°-179°) 126.45 281.525 (180°-329°) 124.1 273.525 (330°-079°) 118.25 269.45	HARRISBURG INTL TOWER 124.8 269.35	GND CON 121.7 348.6
----------------------	---	--	-------------------------------



NE-4, 16 APR 2026 to 14 MAY 2026

NE-4, 16 APR 2026 to 14 MAY 2026

ELEV 310	D	TDZE 308
----------	----------	----------



CATEGORY	A	B	C	D
LPV DA		558/24	250 (300-1/2)	
LNAV/VNAV DA		1572-5	1264 (1300-5)	
LNAV MDA	1180/24 872 (900-1/2)	1180/40 872 (900-3/4)	1180-2 872 (900-2)	1180-2 1/4 872 (900-2 1/4)
CIRCLING	1180-1 870 (900-1)	1180-1 1/4 870 (900-1 1/4)	1180-2 1/2 870 (900-2 1/2)	1440-3 1130 (1200-3)

TDZ/CL Rwy 13
REIL Rwy 31
HIRL Rwy 13-31