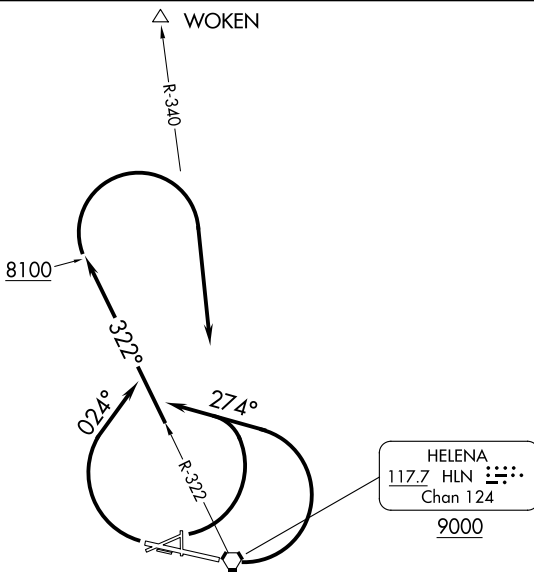


HELENA DEP CON ★
119.5 229.4
SALT LAKE CENTER
133.4 285.4
ATIS
120.4
GND CON
121.9
HELENA TOWER ★
118.3 257.8



TAKEOFF MINIMUMS

Rwys 10, 17, 23, 28, 35: NA-Environmental.

Rwy 5: Standard with minimum climb of 250' per NM to 8100', or 3000-3 for climb in visual conditions.

Rwy 9: Standard with minimum climb of 240' per NM to 8100', or 3000-3 for climb in visual conditions.

Rwy 27: Standard with minimum climb of 390' per NM to 8100', or 3000-3 for climb in visual conditions.

TAKEOFF OBSTACLE NOTES

Rwy 5: Rising terrain beginning 4' from DER, 373' right of centerline, up to 3826' MSL. Terrain beginning 178' from DER, 447' right of centerline, up to 3827' MSL. Fence beginning 358' from DER, 374' right of centerline, up to 3833' MSL. Buildings beginning 1097' from DER, 616' right of centerline, up to 3854' MSL.

Rwy 9: Terrain 14' from DER, 95' right of centerline, 3846' MSL. Vehicle on road 1171' from DER, 677' right of centerline, 3876' MSL. Vehicle on road 1275' from DER, 811' right of centerline, 3880' MSL. Pole 1664' from DER, 815' right of centerline, 3887' MSL.

Rwy 27: Terrain 64' from DER, 431' left of centerline, 3870' MSL. Vehicles on roads, terrain and pole beginning 84' from DER, 118' left of centerline, up to 3886' MSL. Vehicles on roads beginning 949' from DER, 625' left of centerline, up to 3894' MSL. Pole 1474' from DER, 790' left of centerline, 3907' MSL. Trees and buildings beginning 1582' from DER, 616' left of centerline, up to 3917' MSL. Pole 2081' from DER, 1024' left of centerline, 3940' MSL. Pole 2611' from DER, 1147' left of centerline, 3944' MSL.

NOTE: Chart not to scale.

DEPARTURE ROUTE DESCRIPTION

TAKEOFF RUNWAY 5: Climbing left turn to heading 274°, thence. . . .

TAKEOFF RUNWAY 9: Climbing left turn to heading 274°, thence. . . .

TAKEOFF RUNWAY 27: Climbing right turn to heading 024°, thence. . . .

. . . .Continue climb to intercept HLN R-322 northwest bound to 8100, then climbing right turn direct HLN VORTAC, cross HLN VORTAC at or above 9000 before proceeding on course.

VCOA RUNWAYS 5, 9, 27: Obtain ATC approval for VCOA when requesting IFR clearance. Climb in visual conditions to cross Helena Rgnl Airport northbound at or above 6700, then continue climb and proceed on HLN R-340 to WOKEN INT before proceeding on course.

NW-1, 16 APR 2026 to 14 MAY 2026

NW-1, 16 APR 2026 to 14 MAY 2026