

LOC I-HLN	APP CRS	Rwy Ldg TDZE	9000
110.1	271°	Apt Elev	3852
			3877


ILS Z or LOC Z RWY 27

HELENA RGNL (HLN)

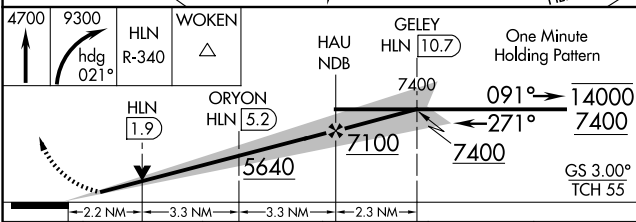
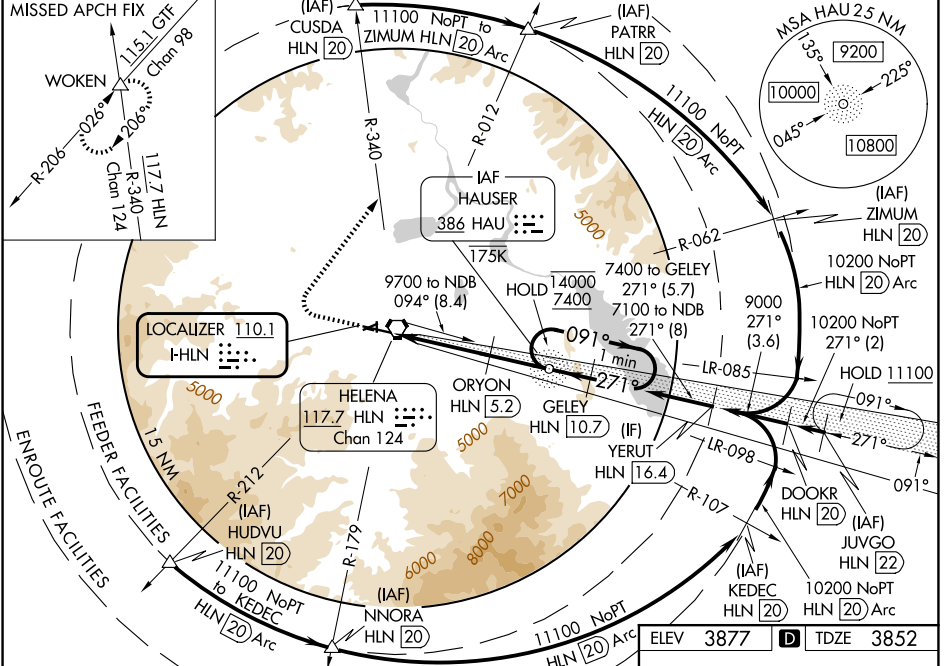
ADF or DME required.

⚠ Circling NA to Rwy's 10 and 28. Circling Rwy 5, 23, 35 NA at night. Inop table does not apply to S-LOC 27 all Cats. For inop ALS, increase S-ILS 27 Cat E visibility to 3/4 mile, increase ORYON fix minimums: S-LOC 27 Cat C/D/E visibility to 2 miles. Circling NA for Cats D and E south of Rwy 9-27.

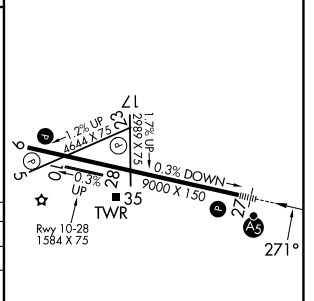
⚠ Holding at HAU NDB authorized for Cat A and B aircraft only. * DME from HLN VORTAC. DME use requires simultaneous reception of I-HLN and HLN DME.

MALSR  MISSED APPROACH: Climb to 4700 then climbing right turn to 9300 on heading 021° and on HLN VORTAC R-340 to WOKEN INT and hold, continue climb-in-hold to 9300. #Missed approach requires minimum climb of 300 feet per NM to 6000; if unable to meet climb gradient, see ILS Y or LOC Y RWY 27.

ATIS	HELENA APP CON *	HELENA TOWER *	GND CON	UNICOM
120.4	119.5 229.4	118.3 (CTAF) 257.8	121.9	122.95



CATEGORY	A	B	C	D	E
S-ILS 27#	4052-1/2 200 (200-1/2)				
S-LOC 27	5640-1 1/4 1788 (1800-1 1/4)	5640-1 1/2 1788 (1800-1 1/2)	5640-3 1788 (1800-3)	1788 (1800-3)	
CIRCLING	5640-1 1/4 1763 (1800-1 1/4)	5640-1 1/2 1763 (1800-1 1/2)	6000-3 2123 (2200-3)	2123 (2200-3)	
ORYON FIX MINIMUMS*					
S-LOC 27	4600-1/2 748 (800-1/2)	4600-3/4 748 (800-3/4)	4600-1 3/4 748 (800-1 1/4)	748 (800-1 1/4)	
CIRCLING	4640-1 763 (800-1)	4800-1 1/4 923 (1000-1 1/4)	6000-3 2123 (2200-3)	2123 (2200-3)	



REIL Rwy's 9, 17 and 35 **Ⓛ**
 MIRL Rwy's 5-23 and 17-35 **Ⓛ**
 HIRL Rwy 9-27 **Ⓛ**

FAF to MAP 8.7 NM

Knots	60	90	120	150	180
Min:Sec	8:42	5:48	4:21	3:29	2:54

NW-1, 16 APR 2026 to 14 MAY 2026

NW-1, 16 APR 2026 to 14 MAY 2026