

RNAV (RNP) Z RWY 27

HELENA RGNL (HLN)

APP CRS 271°	Rwy Ldg TDZE Apt Elev	9000 3852 3877
------------------------	-----------------------------	---

RNP AR APCH - GPS.

⚠ Inop table does not apply to RNP 0.30 DA. For uncompensated Baro-VNAV systems, procedure NA below -28°C or above 54°C. For inop ALS, increase RNP 0.13 DA* visibility all Cats to ¾ SM, RNP 0.30 DA* visibility all Cats to 1¾ SM.

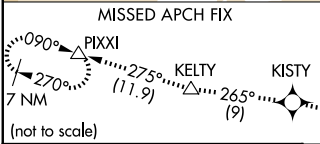
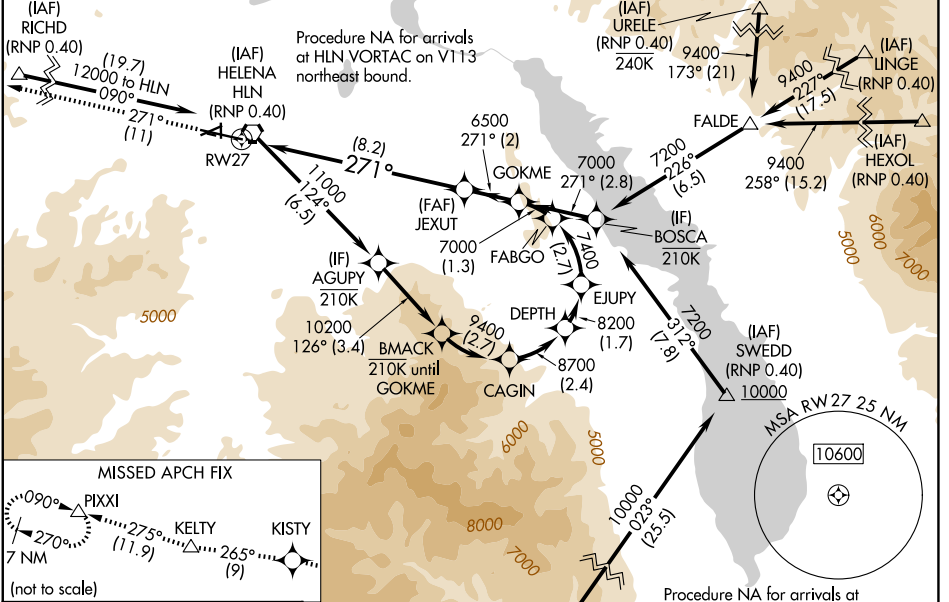
MALSR
AS

MISSED APPROACH: Climb to 12000 on the RNAV missed approach route to PIXXI and hold, continue climb-in-hold to 12000.

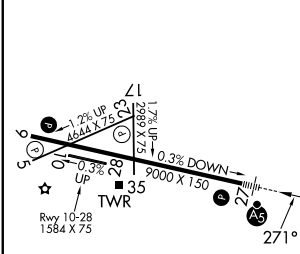
*Missed approach requires minimum climb of 280 feet per NM to 7800.

#Missed approach requires minimum climb of 375 feet per NM to 6300.

ATIS 120.4	HELENA APP CON * 119.5 229.4	HELENA TOWER * 118.3 (CTAF) 257.8	GND CON 121.9	UNICOM 122.95
----------------------	--	---	-------------------------	-------------------------



ELEV 3877	D	TDZE 3852
-----------	----------	-----------



12000	KISTY	tr 265°	KELTY	tr 275°	PIXXI	GOKME
tr 271°	⬤	△	△	△	△	7000
See planview for multiple IF locations.						GP 3.00° TCH 55
RW27			8.2 NM		2 NM	

CATEGORY	A	B	C	D
RNP 0.13 DA*		4172-½	320 (300-½)	
RNP 0.20 DA#		4303-¾	451 (500-¾)	
RNP 0.30 DA#		4353-1	501 (500-1)	
RNP 0.30 DA		4866-4	1014 (1000-4)	

REIL Rws 9, 17, and 35
MIRL Rws 5-23 and 17-35
HIRL Rwy 9-27

AUTHORIZATION REQUIRED

NW-1, 16 APR 2026 to 14 MAY 2026

NW-1, 16 APR 2026 to 14 MAY 2026