

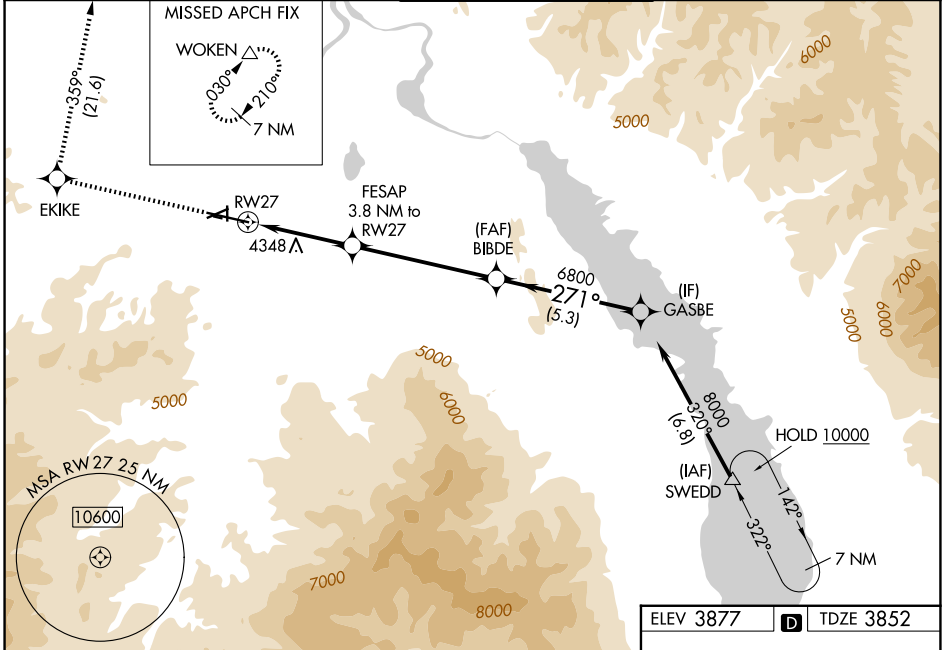
WAAS CH <b>69405</b> <b>W27A</b>	APP CRS <b>271°</b>	Rwy Ldg TDZE Apt Elev <b>9000</b> <b>3852</b> <b>3877</b>
--	------------------------	--

# RNAV (GPS) X RWY 27

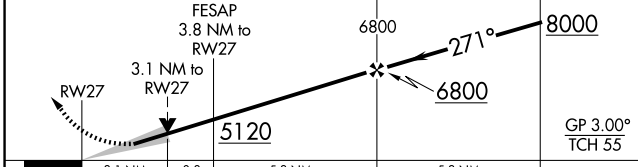
HELENA RGNL (HLN)

RNP APCH - GPS.	MALSR 	MISSED APPROACH: Climb to 9400 direct EKIKE and on track 359° to WOKEN and hold.
 -16°C		

ATIS <b>120.4</b>	HELENA APP CON * <b>119.5 229.4</b>	HELENA TOWER * <b>118.3 (CTAF) 257.8</b>	GND CON <b>121.9</b>	UNICOM <b>122.95</b>
----------------------	--	---	-------------------------	-------------------------

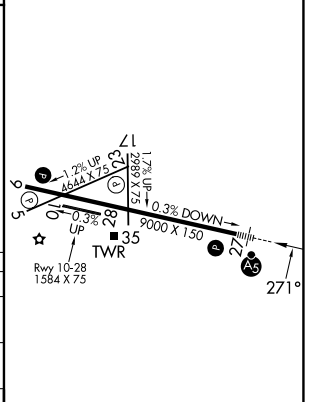


9400	EKIKE	↑	ir 359°	WOKEN
------	-------	---	---------	-------



CATEGORY	A	B	C	D
LPV DA	4501-1 <sup>3</sup> / <sub>8</sub>		649 (700-1 <sup>3</sup> / <sub>8</sub> )	
LNAV/VNAV DA	4724-2		872 (900-2)	
LNAV MDA	4880- <sup>3</sup> / <sub>4</sub> 1028 (1100- <sup>3</sup> / <sub>4</sub> )	4880-1 1028 (1100-1)	4880-2 <sup>1</sup> / <sub>2</sub>	1028 (1100-2 <sup>1</sup> / <sub>2</sub> )
CIRCLING	4880-1 <sup>1</sup> / <sub>4</sub> 1003 (1100-1 <sup>1</sup> / <sub>4</sub> )	4880-1 <sup>1</sup> / <sub>2</sub> 1003 (1100-1 <sup>1</sup> / <sub>2</sub> )	6000-3	2123 (2200-3)

ELEV 3877		TDZE 3852
-----------	--	-----------



REIL Rwy 9, 17, and 35  
MIRL Rwy 5-23 and 17-35  
HIRL Rwy 9-27

NW-1, 16 APR 2026 to 14 MAY 2026

NW-1, 16 APR 2026 to 14 MAY 2026