

WAAS CH <b>48820</b> <b>W35A</b>	APP CRS <b>352°</b>	Rwy Idg TDZE Apt Elev	<b>6002</b> <b>917</b> <b>930</b>
--	------------------------	-----------------------------	---

# RNAV (GPS) RWY 35R

SOUTH TEXAS RGNL AT HONDO (HDO)

RNP APCH.

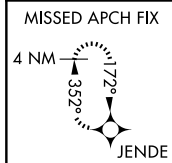
**⚠** Baro-VNAV NA when using Castroville altimeter setting. For uncompensated Baro-VNAV systems, LNAV/VNAV NA below -16°C (4°F) or above 47°C (116°F). Visibility reduction by helicopters NA. When local altimeter setting not received, use Castroville altimeter setting and increase all DA 62 feet and all MDA 80 feet, increase LNAV/VNAV all Cats, and LNAV and Circling Cats C and D visibility ¼ mile. Circling Rwy 8, 13, 17R, 26, 31, 35L NA at night.

**MISSED APPROACH:**  
Climb to 3700 direct JENDE and hold.

ASOS  
**119.675**

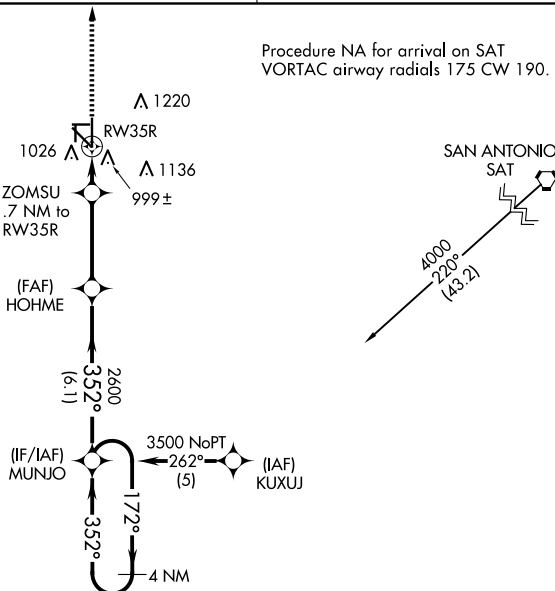
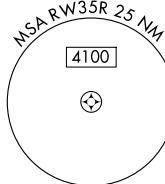
HOUSTON CENTER  
**134.95 269.4**

UNICOM  
**122.725 (CTAF)**



△ 1448

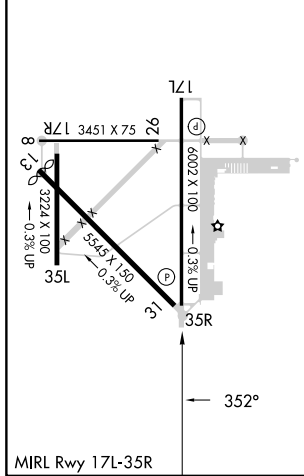
Procedure NA for arrival on SAT  
VORTAC airway radials 175 CW 190.



SC-3, 16 APR 2026 to 14 MAY 2026

SC-3, 16 APR 2026 to 14 MAY 2026

ELEV 930	TDZE 917
----------	----------



HONDO, TEXAS  
Orig-B 15JUL21

29°22'N-99°11'W

# RNAV (GPS) RWY 35R

3700	JENDE	4 NM Holding Pattern			
*LNAV only.		ZOMSU 1.7 NM to RW35R	HOHME 2600	MUNJO	3500
		RW35R	352°	172°	3500
		*1500	2600	352°	GP 3.00° TCH 45
		1.7	3.4 NM	6.1 NM	
CATEGORY	A	B	C	D	
LPV DA	1170-1		253 (300-1)		
LNAV/VNAV DA	1293-1¼		376 (400-1¼)		
LNAV MDA	1360-1	443 (500-1)	1360-1¼ 443 (500-1¼)	1360-1½ 443 (500-1½)	
CIRCLING	1440-1 510 (600-1)	1520-1 590 (600-1)	1580-1¾ 650 (700-1¾)	1580-2 650 (700-2)	