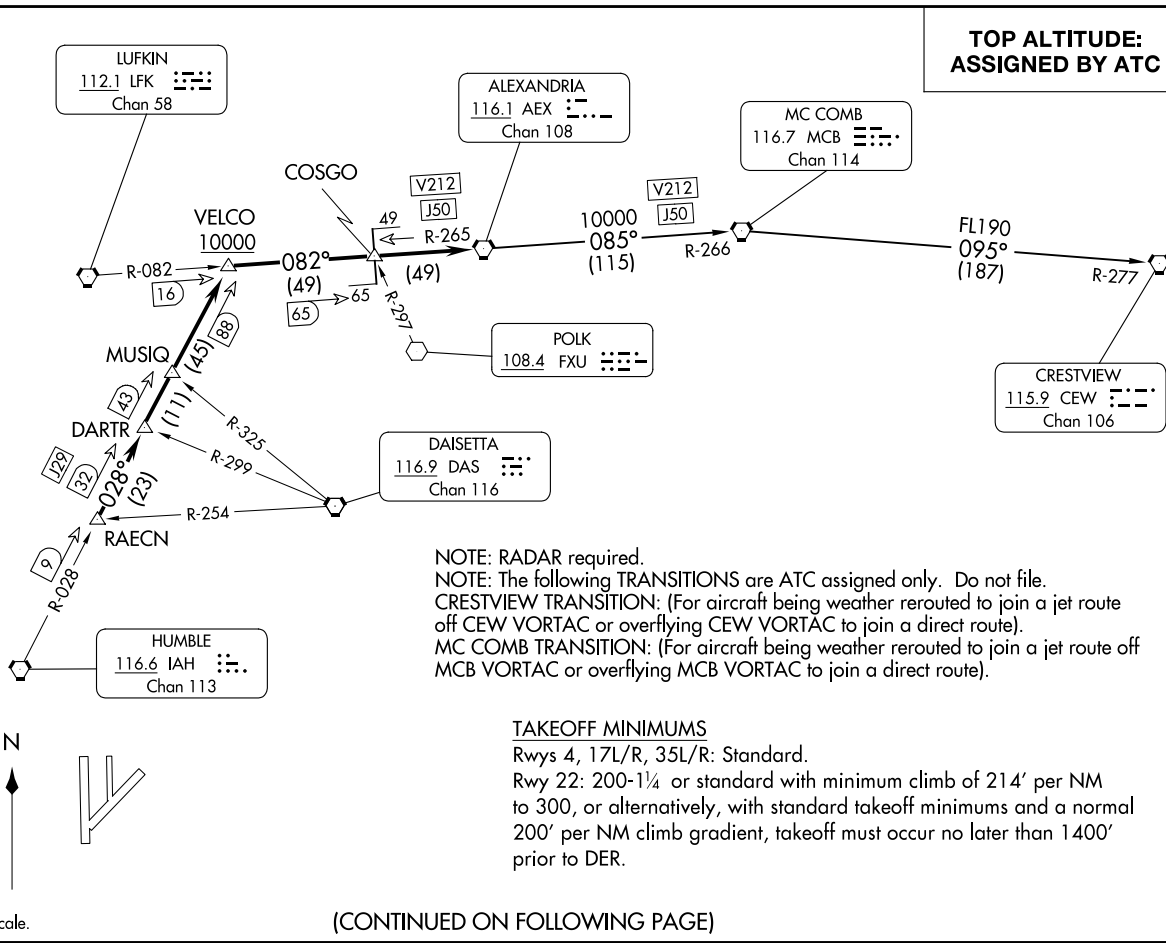


ALEXANDRIA THREE DEPARTURE
 (AEX3.AEX) 07OCT21

HOUSTON DEP CON
 134.45 284.0
 ATIS
 135.575 269.9
 GND CON
 121.6 275.8
 ELLINGTON TOWER
 126.05 253.5

HOUSTON, TEXAS
 ELLINGTON (E,F,D)



**TOP ALTITUDE:
ASSIGNED BY ATC**

ALEXANDRIA THREE DEPARTURE
 (AEX3.AEX) 25331

AL-197 (FAA)

ELLINGTON (E,F,D)
 HOUSTON, TEXAS

NOTE: Chart not to scale.

(CONTINUED ON FOLLOWING PAGE)

NOTE: RADAR required.
 NOTE: The following TRANSITIONS are ATC assigned only. Do not file.
 CRESTVIEW TRANSITION: (For aircraft being weather rerouted to join a jet route off CEW VORTAC or overflying CEW VORTAC to join a direct route).
 MC COMB TRANSITION: (For aircraft being weather rerouted to join a jet route off MCB VORTAC or overflying MCB VORTAC to join a direct route).

TAKEOFF MINIMUMS

Rwy 4, 17L/R, 35L/R: Standard.
 Rwy 22: 200-1¼ or standard with minimum climb of 214' per NM to 300, or alternatively, with standard takeoff minimums and a normal 200' per NM climb gradient, takeoff must occur no later than 1400' prior to DER.

ALEXANDRIA THREE DEPARTURE



DEPARTURE ROUTE DESCRIPTION

TAKEOFF ALL RUNWAYS: Climb on assigned heading for RADAR vectors to RAECN INT. Maintain ATC assigned altitude. Expect filed altitude 10 minutes after departure, thence. . . .

. . . .on IAH R-028 to VELCO INT, cross VELCO INT at or above 10000, then right turn on LFK R-082 and AEX R-265 to AEX VORTAC.

CRESTVIEW TRANSITION (AEX3.CEW): From over AEX VORTAC on AEX R-085 and MCB R-266 to MCB VORTAC, then on MCB R-095 and CEW R-277 to CEW VORTAC.

MC COMB TRANSITION (AEX3.MCB): From over AEX VORTAC on AEX R-085 and MCB R-266 to MCB VORTAC.

SC-5, 16 APR 2026 to 14 MAY 2026

SC-5, 16 APR 2026 to 14 MAY 2026