

(BLTWY7.BLTWY) 21280

AL-197 (FAA)

ELLINGTON (EFD)

HOUSTON, TEXAS

# BLTWY SEVEN DEPARTURE (RNAV)

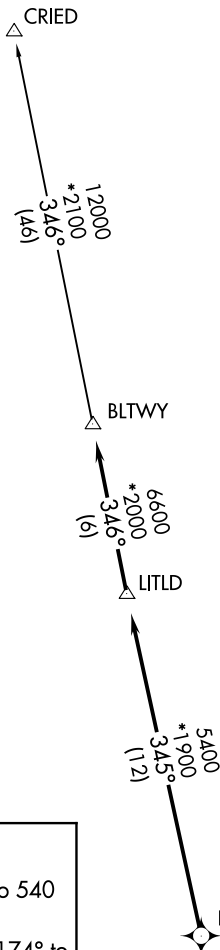
**TOP ALTITUDE:  
ASSIGNED BY ATC**

ATIS  
135.575 269.9  
GND CON  
121.6 275.8  
ELLINGTON TOWER  
126.05 253.5  
HOUSTON DEP CON  
134.45 284.0

NOTE: RADAR required.  
NOTE: DME/DME/IRU or GPS required.  
NOTE: RNAV 1.

### TAKEOFF MINIMUMS

Rwys 4, 17L/R, 22, 35L/R:  
Standard with minimum climb of 500' per NM to 540.



### DEPARTURE ROUTE DESCRIPTION

TAKEOFF RUNWAY 4: Climb on heading 039° to 540 for RADAR vectors to DREMR, thence . . . .

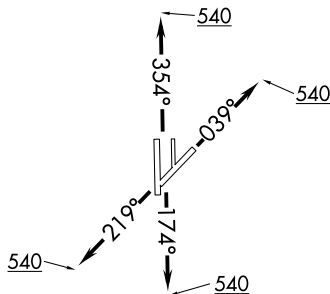
TAKEOFF RUNWAYS 17L/R: Climb on heading 174° to 540 for RADAR vectors to DREMR, thence . . . .

TAKEOFF RUNWAY 22: Climb on heading 219° to 540 for RADAR vectors to DREMR, thence . . . .

TAKEOFF RUNWAYS 35L/R: Climb on heading 354° to 540 for RADAR vectors to DREMR, thence . . . .

...on track 345° to LITLD, then on track 346° to BLTWY, then on (transition). Maintain ATC assigned altitude. Expect filed altitude 10 minutes after departure.

CRIED TRANSITION (BLTWY7.CRIED)



NOTE: Chart not to scale.

# BLTWY SEVEN DEPARTURE (RNAV)

(BLTWY7.BLTWY) 07OCT21

HOUSTON, TEXAS  
ELLINGTON (EFD)

SC-5, 16 APR 2026 to 14 MAY 2026

SC-5, 16 APR 2026 to 14 MAY 2026