

(CRIED1 .CRIED) 24193

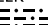
CRIED ONE DEPARTURE

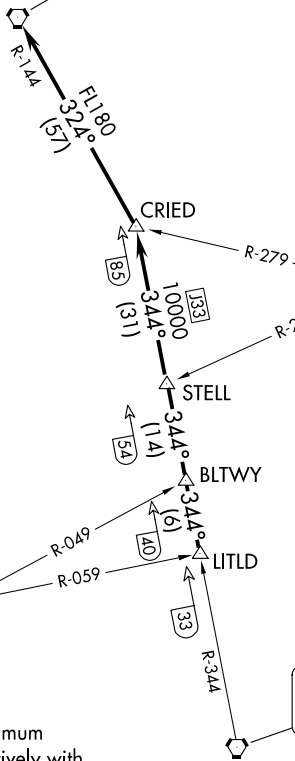
AL-197 (FAA)

ELLINGTON (E,F,D)
HOUSTON, TEXAS


ATIS
135.575 269.9
GND CON
121.6 275.8
ELLINGTON TOWER
126.05 253.5
HOUSTON DEP CON
134.45 284.0

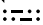
**TOP ALTITUDE:
ASSIGNED BY ATC**


CEDAR CREEK
114.8 CQY 
Chan 95



NOTE: RADAR required.

NAVASOTA
115.9 TNV 
Chan 106

LUFKIN
112.1 LFK 
Chan 58

HUMBLE
116.6 IAH 
Chan 113

TAKEOFF MINIMUMS

Rwys 4, 17L/R, 35L/R: Standard.
Rwy 22: 200-1¼ or Standard with minimum climb of 214' per NM to 300 or alternatively with standard takeoff minimums and a normal 200' per NM climb gradient, takeoff must occur no later than 1400' prior to DER.



DEPARTURE ROUTE DESCRIPTION

TAKEOFF ALL RUNWAYS: Climb on assigned heading for RADAR vectors to LITLD INT. Maintain ATC assigned altitude. Expect filed altitude 10 minutes after departure, thence

. . . . on IAH R-344 to STELL INT, then on IAH R-344 to CRIED INT, then left turn on CQY R-144 to CQY VORTAC.

CRIED ONE DEPARTURE

(CRIED1 .CRIED) 07OCT21

HOUSTON, TEXAS
ELLINGTON (E,F,D)

SC-5, 16 APR 2026 to 14 MAY 2026

SC-5, 16 APR 2026 to 14 MAY 2026