

# HI-TACAN RWY 17R

TACAN EFD Chan <b>31</b>	APCH CRS <b>163°</b>	Rwy Idg TDZE Arprt Elev <b>9001 32 33</b>	AL-197 [USAF]	ELLINGTON (KEFD)
--------------------------	----------------------	---	---------------	------------------

RADAR required for procedure entry.

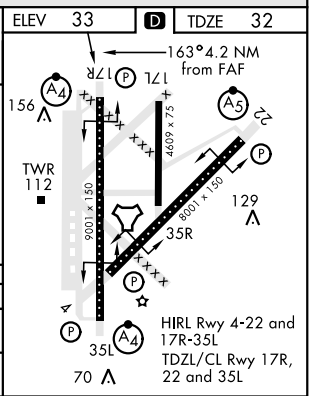
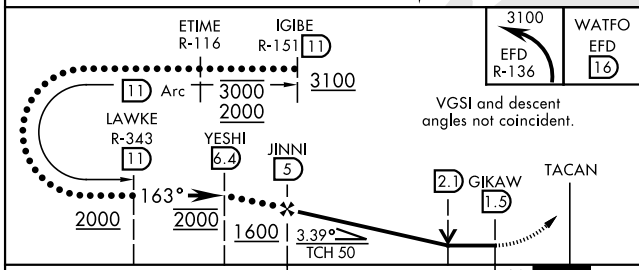
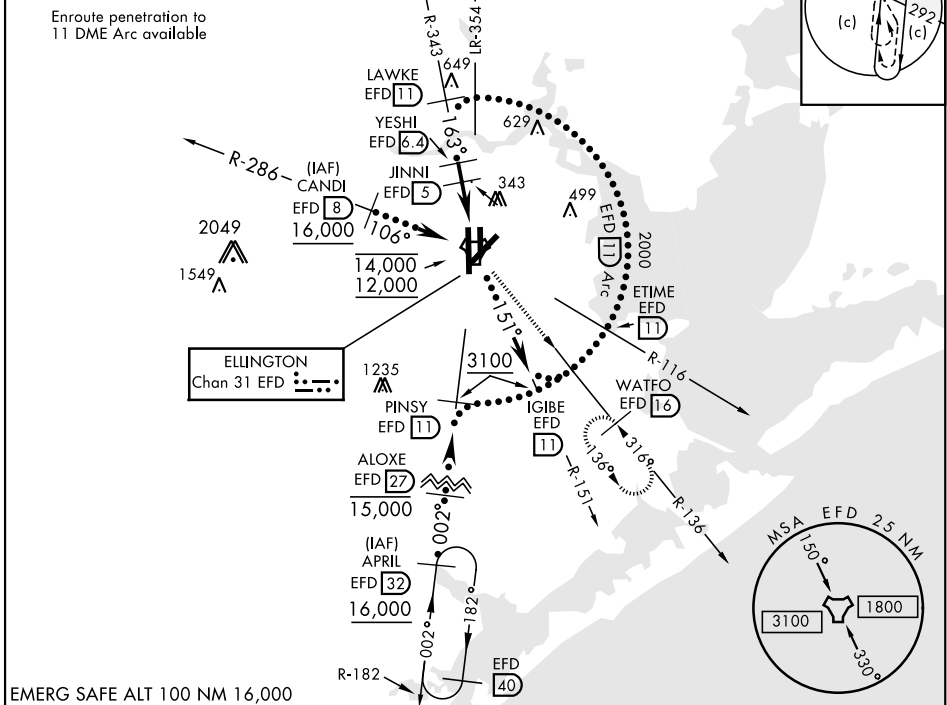
**MALSF** (A4)

**MISSED APPROACH:** Climbing left turn to 3100 on EFD TACAN R-136 to WATFO/EFD 16 DME and hold.

\* When ALS inop, increase CAT CDE vis to 1 1/2 miles.  
 \*\* Circling not authorized W of Rwy 17R-35L.

ATIS <b>135.575 269.9</b>	HOUSTON APP CON <b>134.45 284.0</b>	TOWER <b>126.05 253.5</b>	GND CON <b>121.6 275.8</b>
------------------------------	--	------------------------------	-------------------------------

EFD TACAN	N29°36.36' W95°09.58'
CANDI	N29°39.24' W95°18.17'
APRIL	N29°04.53' W95°14.05'
WATFO	N29°23.90' W94°58.07'



CATEGORY	C	D	E
S-17R *	500/60	468 (500-1 1/2)	
CIRCLING **	580-1 1/2 547 (600-1 1/2)	640-2 607 (700-2)	700-2 1/4 667 (700-2 1/4)

HOUSTON, TEXAS 29° 36' N-95° 10' W ELLINGTON (KEFD)

# HI-TACAN RWY 17R



SC-5, 16 APR 2026 to 14 MAY 2026

SC-5, 16 APR 2026 to 14 MAY 2026